



U.S. NUCLEAR REGULATORY COMMISSION

March 1978

# REGULATORY GUIDE

OFFICE OF STANDARDS DEVELOPMENT

REGULATORY GUIDE 5.55

STANDARD FORMAT AND CONTENT OF SAFEGUARDS  
CONTINGENCY PLANS FOR FUEL CYCLE FACILITIES

FOR  
COMMENT

## USNRC REGULATORY GUIDES

Regulatory Guides are issued to describe and make available to the public methods acceptable to the NRC staff of implementing specific parts of the Commission's regulations, to delineate techniques used by the staff in evaluating specific problems or postulated accidents, or to provide guidance to applicants. Regulatory Guides are not substitutes for regulations, and compliance with them is not required. Methods and solutions different from those set out in the guides will be acceptable if they provide a basis for the findings requisite to the issuance or continuance of a permit or license by the Commission.

Comments and suggestions for improvements in these guides are encouraged at all times, and guides will be revised, as appropriate, to accommodate comments and to reflect new information or experience. However, comments on this guide, if received within about two months after its issuance, will be particularly useful in evaluating the need for an early revision.

Comments should be sent to the Secretary of the Commission, U.S. Nuclear Regulatory Commission, Washington, D.C. 20555, Attention: Docketing and Service Branch.

The guides are issued in the following ten broad divisions:

- |                                   |                        |
|-----------------------------------|------------------------|
| 1. Power Reactors                 | 6. Products            |
| 2. Research and Test Reactors     | 7. Transportation      |
| 3. Fuels and Materials Facilities | 8. Occupational Health |
| 4. Environmental and Siting       | 9. Antitrust Review    |
| 5. Materials and Plant Protection | 10. General            |

Requests for single copies of issued guides (which may be reproduced) or for placement on an automatic distribution list for single copies of future guides in specific divisions should be made in writing to the U.S. Nuclear Regulatory Commission, Washington, D.C. 20555, Attention: Director, Division of Document Control.

## TABLE OF CONTENTS

	<u>Page</u>
<b>INTRODUCTION</b>	
Purpose and Applicability.....	ii
Use of the Standard Format.....	ii
Style and Composition.....	iii
Physical Specifications of Submittals.....	iii
Procedures for Updating or Revising Pages.....	iv
Number of Copies.....	iv
Public Disclosure.....	v
Compatibility.....	v
<b>CHAPTER 1 <u>BACKGROUND</u></b>	
1.1 Perceived Danger.....	5.55-1
1.2 Purpose of the Plan.....	5.55-1
1.3 Scope of the Plan.....	5.55-1
1.4 Definitions.....	5.55-2
<b>CHAPTER 2 <u>GENERIC PLANNING BASE</u></b> .....	5.55-2
<b>CHAPTER 3 <u>LICENSEE PLANNING BASE</u></b>	
3.1 Licensee's Organization for Safeguards Contingency Response.....	5.55-3
3.2 Physical Layout.....	5.55-3
3.3 Law Enforcement Interface and Assistance.....	5.55-3
3.4 Policy Constraints and Assumptions.....	5.55-4
3.5 Control and Communications.....	5.55-4
3.6 Safeguards System Hardware Considerations.....	5.55-5
3.7 Administrative and Logistical Considerations.....	5.55-5
<b>CHAPTER 4 <u>RESPONSIBILITY MATRIX</u></b> .....	5.55-6
<b>CHAPTER 5 <u>PROCEDURES SUMMARY</u></b> .....	5.55-7
<b>SUPPLEMENT: A REPRESENTATIVE SAFEGUARDS CONTINGENCY PLAN FOR A FUEL CYCLE PLANT.....</b>	5.55-8

## INTRODUCTION

The Energy Reorganization Act of 1974, which established the Nuclear Regulatory Commission (NRC), directed the NRC, among other things, to develop contingency plans "...for dealing with threats, thefts, and sabotage relating to special nuclear materials, high-level radioactive wastes and nuclear facilities resulting from all activities licensed under the Atomic Energy Act of 1954, as amended...."

The principal requirements for the development of safeguards contingency plans for licensed fuel cycle facilities are found in 10 CFR Part 50, "Licensing of Production and Utilization Facilities"; Part 70, "Special Nuclear Materials"; and Part 73, "Physical Protection of Plants and Materials." Paragraphs 10 CFR 50.34(d) and 10 CFR 70.22(j) identify the requirements for a safeguards contingency plan. Appendix C of 10 CFR Part 73 identifies the criteria to be followed in developing the contingency plan.

A licensee safeguards contingency plan is a document that provides guidance to licensee personnel and identifies procedures to accomplish specific, defined objectives in the event of threats, thefts, or sabotage relating to special nuclear material or nuclear facilities. An acceptable safeguards contingency plan must contain (1) a predetermined set of decisions and actions to satisfy stated objectives, (2) an identification of the data, criteria, procedures, and mechanisms necessary to effect efficiently the decisions and actions, and (3) a specification of the individual, group, or organizational entity responsible for each decision and action.

A safeguards contingency plan consists of five elements: (1) Background, (2) a Generic Planning Base, (3) a Licensee Planning Base, (4) a Responsibility Matrix, and (5) Procedures.

The Background contains the purpose and scope of the plan, describes the environment within which the plan will be put into effect, and defines the terms used.

The Generic Planning Base contains a list of events to be planned for and the associated objective to be reached for each event. It may also include for each event an overview of the general types of decisions and actions and other generic information helpful to the licensee in clearly presenting the planned responses to reach the objective.

The Licensee Planning Base contains the planning information peculiar to a given licensee including his organizational entities for contingency response tasking, facility descriptions and locations necessary for response planning and coordination, command and control functions, etc.

The Responsibility Matrix is a format used to specify the assignment of specific decisions and actions that each organizational entity takes to effect such response.

For each organizational entity, the decisions and actions, as assigned in the Responsibility Matrix, are finally summarized in a Procedures Summary for that entity. The Procedures Summaries that result are simplified presentations of the assigned responsibilities for use in training and implementing the plan. The Procedures Summary, although part of the contingency plan, does not have to be submitted to the NRC for approval (see Chapter 5 ).

This regulatory guide prescribes the proposed standard format for the safeguards contingency plan. It also contains an example contingency plan, included as a supplement, to illustrate the guide's application. This guide may be revised to reflect comments received and additional staff review.

### Purpose and Applicability

This standard format and content document has been prepared to aid in ensuring completeness of planning and presentation and to simplify the NRC review of the safeguards contingency plan. It applies to fuel cycle licensees who are subject to the requirements of 10 CFR § 73.50 and § 73.60 (proposed 10 CFR § 73.45 and § 73.46, see 42 FR 34317, July 5, 1977).

This document describes the information required for a plan. Information submitted will be reviewed for completeness on the basis of unique site considerations and the contents of this guide. If an application does not provide a reasonably complete presentation of the required information, final review will be delayed until the needed information is provided. It is anticipated that the safeguards contingency plan will be submitted as an attachment to the physical security plan. To the extent that the topics in the contingency plan are treated in adequate detail in a licensee's approved physical security plan, they may be incorporated by cross reference to the security plan. The applicant or licensee should include additional information as appropriate. It is also the responsibility of the applicant or licensee to be aware of new and revised NRC regulations.

Information and procedures delineated in regulatory guides in Division 5, "Materials and Plant Protection," and technical reports and appropriate to certain sections of the physical security plan submitted under Paragraph 50.34(c) of 10 CFR Part 50 or 10 CFR § 73.50 or § 73.60 (proposed 10 CFR § 73.45 and § 73.46, see 42 FR 34317, July 5, 1977) may be incorporated by reference. The applicant should discuss his plans and programs with the NRC staff before preparing his contingency plan, giving particular emphasis to the depth of information required for this plan.

### Use of the Standard Format

The standard format and content is described in succeeding chapters and is illustrated in the example plan presented in the supplement.

If the applicant or licensee chooses to adopt the standard format and content, he should follow the numbering system of this document at least down to the level of subsection (i.e., 3.4.1). Certain subsections may be omitted from an application if they are clearly unnecessary

for providing a complete plan or if they are needlessly repetitive. In such cases appropriate adaptation of the standard format to accommodate the particular circumstances is permissible.

The applicant or licensee may wish to submit in support of his contingency plan information that is not required by regulations and is not essential to the description of the physical protection program. Such information could include, for example, historical data submitted in demonstration of certain criteria, discussions of alternatives considered, or supplementary data regarding assumed models, data, or calculations. This type of information should be clearly labeled and provided as an attachment to the submittal so that it will not be considered as a license condition.

### Style and Composition

The applicant or licensee should strive for a clear, concise presentation of information that portrays the general perspective and concepts of the basic plan. Details about specific aspects of the plan may be relegated to the appendices to enhance the clarity of the presentation in the basic plan and to facilitate updating and maintenance of the information.

Confusing or ambiguous statements and general statements of intent should be avoided. Definitions and abbreviations should be consistent throughout the submittal and should be consistent with generally accepted usage unless otherwise defined in the document.

Drawings, diagrams, and tables should be used when information may be presented more adequately or conveniently by such means. In general, these illustrations should be located in the section where they are first referenced. Care should be taken to ensure that all information presented in drawings is legible, that symbols are defined, and that drawings are not reduced to the extent that they cannot be read by unaided normal eyes.

A table of contents should be included in each submittal.

### Physical Specifications of Submittals

All materials submitted in a safeguards contingency plan should conform to the following physical dimensions of page size, quality of paper and inks, numbering of pages, etc.:

#### 1. Page Size

Text pages: 8-1/2 x 11 inches.

Drawings and graphics: 8-1/2 x 11 inches preferred; however, a larger size is acceptable provided the finished copy when folded does not exceed 8-1/2 x 11 inches.

#### 2. Paper Stock and Ink

Suitable quality in substance, paper color, and ink density for handling and for microfilming.

3. Page Margins

A margin of no less than one inch should be maintained on the top, bottom, and binding side of all pages submitted.

4. Printing

Composition: text pages should be single spaced.

Type face and style: must be suitable for microfilming.

Reproduction: may be mechanically or photographically reproduced.

Pages may be printed on both sides with the images printed head to head.

5. Binding

Pages should be punched for looseleaf standard 3-hole binder.

6. Page Numbering

Pages should be numbered sequentially.

7. Format References

In the application, references to this Standard Format should be by chapter and section numbers.

Procedures for Updating or Revising Pages

The updating or revising of data and text should be on a replacement page basis.

The changed or revised portion of each page should be highlighted by a vertical line. The line should be on the margin opposite the binding margin for each line changed or added. All pages submitted to update, revise, or add pages to the plan should show the date of change. The transmittal letter should include an index page listing the pages to be inserted and the pages to be removed. When changes or additions that affect the table of contents are made, pages for a revised table of contents should be provided.

Number of Copies

The applicant or licensee should (1) submit 6 copies to the Director, Office of Nuclear Material Safety and Safeguards, U.S. Nuclear Regulatory Commission, Washington, D.C. 20555, or (2) file them in person at the Commission's office at 1717 H Street NW., Washington, D.C., or at 7915 Eastern Avenue, Silver Spring, Maryland.

### Public Disclosure

The NRC has established that safeguards contingency plans contain information of a type specified in 10 CFR § 2.790(d) and shall be subject to disclosure only in accordance with the provisions of 10 CFR § 9.12.

### Compatibility

The applicant or licensee should ensure that the contingency plan is compatible with the other sections of his application. Reference to sections in the physical security plan may be made in response to information requested by this guide.

## 1. BACKGROUND

### 1.1 PERCEIVED DANGER

Provide a statement of the perceived danger to the security of licensee personnel and licensee property posed by the possibility of attempts to commit industrial sabotage or to steal strategic special nuclear material. The adversary attributes assumed for safeguards contingency planning stem from those specified by NRC as a basis for current safeguards system design or upgrading. The statement contained in 10 CFR § 73.55(a) or subsequent Commission statements will suffice. The information is included in the safeguards contingency plan for ready reference and clarity with regard to the adversary capabilities that are assumed to oppose the performance of the primary security mission of the plan. The applicant or licensee should examine his operation to determine its vulnerabilities in light of the threats postulated by the Commission. This examination is to make the applicant or licensee more aware of the total scope of response and will facilitate the generation of events in the Generic Planning Base.

### 1.2 PURPOSE OF THE PLAN

State the general aims and purposes underlying the implementation of the plan, e.g., general uses intended for the plan, the particular plant site covered, etc.

### 1.3 SCOPE OF THE PLAN

Discuss the scope of the plan by addressing the following information:

The general types of contingencies that have been considered, i.e., theft, sabotage, threats.

The primary security mission (task to be accomplished) in response to an adversary action and the general operational concepts or approach to performing the mission. The mission statement simply reveals what is to be accomplished and when and why. The operational concept presents an overview of how the mission is to be accomplished. Also, for clarity of intent, the operational concept may indicate explicitly the conditions under which the plan might be executed, e.g., night, day, all weather, natural disasters, fires, site evacuations, etc.

Where annotated diagrams or maps of the plant site layout and surrounding areas will be helpful for quickly identifying reference locations, rallying points, movement routes, designated security sectors, etc., they may be included here or referred to if included elsewhere in the plan.



#### 1.4 DEFINITIONS

Alphabetically list the terms and the corresponding definitions used in describing the operational and technical aspects of the plan.

#### 2. GENERIC PLANNING BASE

Identify those events that signal the beginning or aggravation of a safeguards contingency according to how they are first perceived by the licensee's personnel. A sufficient number of events should be identified to cover the range of possible safeguards contingencies that are envisioned. Generic specification of the events is suggested to limit the number that are required for the plan. Refer to Appendix C of the supplement for examples illustrating the manner of specifying these events.

For each event identified, specify the objective to be accomplished by the operational elements when they respond to that particular event. In selecting an objective, consideration should be given to uncertainties about the situation that generally will prevail as of the time the subject events occur. For example, if information available at the time is likely to be so vague that the operational elements will be uncertain whether or not an adversary incursion is in progress, an appropriate objective for the event would involve determining what the actual situation is. Attainment of this objective would in turn clarify the situation and lead to the next event and objective most appropriate for the continued response in order to accomplish the primary security mission reflected in Section 1.3.

In addition to the required information above, other information may be included in the generic planning base that is helpful to the licensee (or applicant) in preparing or clearly presenting the general nature of the planned responses to achieve the selected objectives. For example, listing of the categories of actions or the general approach that will be taken by the overall response organization to accomplish a given objective may be helpful in planning, assigning, and subsequent training of personnel in the specific response actions developed in the Responsibility Matrix relating to that objective. Such listing would be tantamount to presenting a limited operational concept that is specifically applicable to the attainment of the particular objective. Another type of information that may be helpful for ready reference is an illustration that shows sequential relationships among all the generic events and objectives utilized for planning. A version of this type of information is shown in Appendix C of the example plan contained in the supplement.

#### 3. LICENSEE PLANNING BASE

In successive paragraphs, briefly present information about the licensee's organization, infrastructure, capabilities, constraints, law enforcement assistance, and other considerations that bear upon the execution of the contingency responses of the plan. Only current capabilities should be reflected to ensure realistic prospects for plan execution in the event of a contingency during the current period. If applicable, reference may be made to parts of the physical security plan where pertinent information is adequately presented, rather than repeating the particular information in the safeguards contingency plan. Types of information that

should be considered for inclusion in the plan are further described below. Use additional paragraphs as necessary to present other pertinent information.

### 3.1 LICENSEE'S ORGANIZATION FOR SAFEGUARDS CONTINGENCY RESPONSE

Provide a description of the organization adopted for purposes of planning, assigning, and conducting coordinated safeguards contingency response actions to attain the specified objectives presented in the Generic Planning Base. This task organization should reflect the personnel composing the various operational entities that appear in the Responsibility Matrix and Procedures Summaries; these are the entities tasked in the plan that implement detailed contingency response actions. The minimum composition of each operational entity over a 24-hour manning period should be indicated, as well as any special equipment that would be available with the entity. The designated leader and alternate leader of an operational entity may be identified implicitly by first and second placement on the respective listing or by explicit identification within the listing. Procedures for alerting and marshalling off-duty personnel, as applicable, should also be presented.

### 3.2 PHYSICAL LAYOUT

Operations maps (or appropriate diagrams) showing the layout of the plant and site features and the surrounding local geographic areas may be included here or elsewhere in the plan (e.g., Section 1.3 in connection with the operational concept). If included elsewhere, merely refer to the particular location in this paragraph. The purpose of this type of information is to provide the response forces with an easily referenced graphical display of positional information that will serve as a common reference for rapidly coordinating response operations during execution. In that regard, planned locations (such as alternative rallying points, control and coordination points, law enforcement agency (LEA) locations, movement routes, road block locations, etc.) may be identified by annotated coding on the map. This will facilitate fast and accurate communication of the actual situation and thereby assist coordinating and adjusting response operations as appropriate to the actual situation.

### 3.3 LAW ENFORCEMENT INTERFACE AND ASSISTANCE

Identify each separate law enforcement agency with which arrangements have been made for safeguards emergency assistance. For each agency, state the modes and points of contact, describe the notification procedure, state the expected response in terms of manpower as a function of time, and state the equipment that responding personnel will possess. Describe the general marshalling procedures and channels established for coordination with arriving LEA onsite and while enroute. In addition, describe any additional special capabilities that will be available such as helicopters, offsite roadblocks, hot pursuit arrangements, Special Weapons and Tactics (SWAT) teams, hostage negotiation expertise, bomb disposal expertise, and LEA communications facilities that will be used to coordinate response activities. Indicate the principal law enforcement official or agency for requesting and coordinating additional LEA response as required.

As applicable, provide similar information on the interface and assistance of bomb disposal units with which direct arrangements have been made.

#### 3.4 POLICY CONSTRAINTS AND ASSUMPTIONS

Identify laws and company policies that will substantially constrain or otherwise influence execution of response actions during contingency situations. This may include, but need not be limited to, the following areas as applicable:

- a. Extent to which local, county, and State law enforcement will be depended on to protect plant properties and employees against adversary intrusion and theft incidents.
- b. Extent to which company employees will be allowed to perform hazardous physical security duties to accomplish safeguards contingency response actions.
- c. Extent to which off-duty employees and employee property may be counted upon in response to security contingencies.
- d. Whether licensee personnel or local LEA are in charge of coordinating overall joint onsite response.
- e. Role of licensee personnel in local offsite LEA operations.

#### 3.5 CONTROL AND COMMUNICATIONS

Information concerning the planned control arrangements and the use and operation of the various means of communication (licensee and LEA as applicable) during safeguards contingency response operations is included in this section. Emphasis should be on the planned operating procedures that are to apply for coordination of the various operational entities involved.

The information on control arrangements should clearly reflect who controls what and when. Also, as applicable, the manner of passing control from one point of leadership to another during progress of a contingency situation should be specific. The leader of any operational entity is presumed to be in control of that entity unless otherwise specified. Primary and alternate locations of key control points and individuals and the manner of announcing the use of an alternate location rather than the primary one are appropriate items to be addressed.

With regard to communications, the allocation, control, and usage of the various means of communications should be specific along with any special instructions that apply regarding operation of the equipment. As applicable, the specification and use of various codes or various features of the alarm system for rapid communication of situational information also are appropriate items for this section.

### 3.6 SAFEGUARDS SYSTEM HARDWARE CONSIDERATIONS

Information of operational significance to the utilization of safeguards systems equipment may be included here or elsewhere in the plan, as desired for clarity. For example, the location of available special weapons and protective equipment might be indicated here or in the section on administrative and logistical considerations. Also, information concerning communications equipment might be more appropriately included in the control and communications section than here. Information of interest in this section is the type that is necessary to coordinate commitment or use of the equipment during contingency response operations, e.g., its location if not installed, who obtains it, what operating modes apply and when, the readiness state maintained, etc. Descriptive information on system configuration, technical performance characteristics, and installed locations may be included by reference to appropriate parts of the physical security plan if such information is felt necessary in the interest of clarity. If no information is included in this section, the simple statement, "This section not used," should be inserted.

### 3.7 ADMINISTRATIVE AND LOGISTICAL CONSIDERATIONS

Describe any special arrangements and practices that are maintained or implemented to ensure adequate administrative and logistical support during response to safeguards contingency events.

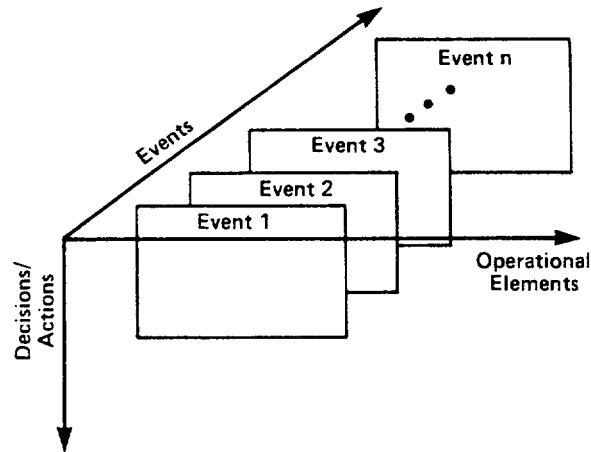
The descriptions should include provisions for ensuring that all equipment and expendable supplies needed to effect a successful response to a safeguards contingency will be easily accessible, in good working order, and in sufficient supply. Particular attention should be focused on extra supplies and equipment such as radio batteries, ammunition, special weapons, gas masks, body armor, and helmets that could substantially affect the effectiveness of response personnel.

Include also the planned arrangements for provision of necessary emergency services during safeguards contingency operations, such as medical evacuation and treatment of casualties and health physics. In that regard, existing emergency plans and preparations for provision of such services may be applicable, provided they are not dependent upon the availability of personnel who are important or essential to the safeguards contingency response actions.

## 4. RESPONSIBILITY MATRIX

Develop a Responsibility Matrix corresponding to the Generic Planning Base. The tabulations in the Responsibility Matrix should provide an overall picture of the response actions and their interrelationships.

The Responsibility Matrix, illustrated below, is an array format to facilitate systematic presentation and crosscheck of the contingency response actions planned for each operational element. The three dimensions depicted are: "Events," "Operational Elements," and "Decisions/ Actions."



Each Event should correspond to one of the contingency events selected in the Generic Planning Base (Chapter 2). The Decisions-Actions for each Event should delineate the decisions and actions and their assignment to the responsible Operational Element (Sections 3.1 and 3.3) so as to gain the objective associated with that Event in the Generic Planning Base.

One or more pages may be used to present the contingency actions associated with each event, depending upon the number of operational elements involved in the plan and the amount of column width allocated for each operational element. The matrix format shown in the representative fuel cycle safeguards contingency plan contained in the Supplement has spaces for 10 different operational elements on two pages of presentation for each contingency event; however, more or less may be used as necessary.

It may be noted that the example matrix contained in the Supplement also shows the objective associated with each contingency event in two places: the first column and at the top in one other column. This presentation is for ease of reference. The first column permits quick reference during development and maintenance of the plan, and the other column serves to identify the particular operational element which decides when that objective has been attained.

Safeguards responsibilities shall be assigned in a manner that precludes conflicts in duties or responsibilities that would prevent the execution of the plan in any safeguards contingency.

## 5. PROCEDURES SUMMARY

Develop a Procedures Summary for each operational element that summarizes the actions from the Responsibility Matrix for assignment to that operational element. The set of Procedures Summaries that results is to aid in the assignment and training of tasks for effective implementation of the plan. The Procedures Summary, although part of the contingency plan, does not have to be submitted to the NRC for approval. It will be prepared and maintained at the licensee's facility and will be inspected by the NRC Office of Inspection and Enforcement to ensure compliance with the Responsibility Matrix.

Each Procedures Summary should provide clear and concise statements of the general responsibilities of the operational element during any safeguards contingency and of the specific actions assigned with respect to the range of contingency events covered in the plan. In that regard show where a task begins and follow its progress through each operational element until the task is completed; i.e., show the actions that each of the operational elements accomplishes to carry out the task. In summarizing actions from the Responsibility Matrix, a given set of summary statements may be used to cover more than one event when the events involved require the same or effectively the same type of actions. Also, where a given action is found to be common procedure for a number of operational elements, regardless of the specific contingency, that action may be included in a summary grouping of standard operating procedures for presentation in each of the Procedures Summaries. Statements of standard operating procedures may also reflect information of general interest to all operational entities, for example, the assignment of overall control responsibilities.

Choice of the language used to prepare the Procedures Summaries should take into account on-the-job terminology.

To facilitate operations, the licensee may wish to condense key portions of the Procedures Summary to checklist formats according to stages of increased preparedness to respond. For example, events deemed to require a comparable level of preparedness may be grouped under some predetermined alert code, e.g., yellow alert for conditions that are not perceived as imminent but that do require an enhanced state of readiness (some expressed threats, non-threatening civil demonstrations, unresolved perimeter alarms, etc.). When the condition is evaluated and deemed to require an enhanced state of readiness, the alert posture is increased to an appropriate higher level, e.g., orange or red. In effect, the events are grouped in alert categories by their sensitivity and assessed immediacy. To achieve the assigned alert status, checklists are used by each operational element as reminders to perform specifically assigned duties.

SUPPLEMENT

A REPRESENTATIVE SAFEGUARDS CONTINGENCY PLAN  
FOR A FUEL CYCLE PLANT

TABLE OF CONTENTS

	<u>Page</u>
<b>CHAPTER 1 <u>BACKGROUND</u></b>	
1.1 Perceived Danger.....	5.55-9
1.2 Purpose of the Plan.....	5.55-9
1.3 Scope and Operational Concept of the Plan.....	5.55-9
1.3.1 Types of Contingencies and Responses Considered.....	5.55-9
1.3.2 Operational Concept in Response to an Adversary Incursion.....	5.55-10
1.4 Definitions.....	5.55-10
<b>CHAPTER 2 <u>GENERIC PLANNING BASE</u></b>	5.55-12
<b>CHAPTER 3 <u>LICENSEE PLANNING BASE</u></b>	
3.1 Licensee's Organization for Safeguards Contingency Response.....	5.55-13
3.2 Physical Layout.....	5.55-13
3.3 Law Enforcement Interface Assistance.....	5.55-13
3.4 Policy Constraints and Assumptions.....	5.55-14
3.5 Control and Communications.....	5.55-14
3.5.1 Transition Control Procedure.....	5.55-14
3.5.2 Primary and Alternate Locations.....	5.55-15
3.5.3 Site Radio Comm Net.....	5.55-15
3.5.4 Local Police Net.....	5.55-16
3.5.5 Silent Alarms and Intercoms.....	5.55-16
3.6 Safeguards Systems Hardware.....	5.55-17
3.7 Administrative and Logistical Planning.....	5.55-17
3.7.1 Radio Batteries.....	5.55-17
3.7.2 Arms and Ammunition.....	5.55-17
3.7.3 Emergency Services.....	5.55-17
<b>CHAPTER 4 <u>RESPONSIBILITY MATRIX</u></b>	5.55-17
<b>CHAPTER 5 <u>PROCEDURES SUMMARY</u></b>	5.55-17
<b>APPENDIX A - ALPHA SITE OPERATIONAL ELEMENTS</b>	5.55-18
<b>APPENDIX B - LAW ENFORCEMENT ASSISTANCE</b>	5.55-20
<b>APPENDIX C - EVENTS AND OBJECTIVES FOR CONTINGENCY RESPONSES</b>	5.55-22
<b>APPENDIX D - COMMUNICATION PROCEDURES</b>	5.55-32
<b>APPENDIX E - RESPONSIBILITY MATRIX</b>	5.55-35
<b>APPENDIX F - PROCEDURES SUMMARY</b>	5.55-80

## 1. BACKGROUND

### 1.1 PERCEIVED DANGER

For planning purposes, it is assumed that an adversary incursion against REP Plant could occur at anytime, with little or no prior warning, to steal SNM or to commit industrial sabotage or to seize and hold areas of the plant until stated demands are met. Also, as a hoax or with serious intent, a potential adversary could threaten to steal SNM from or to sabotage the plant.

Potential adversaries may be well-trained and dedicated external persons without employee access to REP Plant protected areas or knowledgeable internal persons with the normal REP Plant employee credentials. An external adversary may include one to a small group of armed or unarmed individuals. If the adversary is armed, it is assumed the weapons types could vary from hand guns to shotguns to mixtures of weapons such as automatic rifles and explosives. Tactics employed could vary from those commonly used by criminal elements in armed robberies or extortions to infantry squad-level tactics involving coordinated team movements and use of weapons, as might be employed by well-trained terrorists. External adversaries might also be assisted by an unarmed internal adversary acting in collusion.

Internal adversaries are assumed to include unarmed individuals who may be acting in collusion. One of the individuals may have daily authorized access to VAs or the MAA. Attempts at diversion or sabotage may be covertly executed over a period of time. However, one-time attempts might also be undertaken, possibly in conspiracy with an external adversary. Acts of guile and subterfuge may be expected to cover the internal adversary's actions. In general, nonviolent methods may be employed, but unarmed assault upon REP Plant employees might also occur in furtherance of the adversary's mission.

### 1.2 PURPOSE OF THE PLAN

This document presents the safeguards contingency plan of a Representative Plant located on Alpha Site. The plan was prepared to guide and coordinate response actions by employees at Alpha Site against perceived or actual threats or attempts to (1) steal special nuclear material from the Representative Plant or (2) sabotage the plant's facilities.

### 1.3 SCOPE AND OPERATIONAL CONCEPT OF THE PLAN

#### 1.3.1 Types of Contingencies and Responses Considered

Responses to deal with and prevent successful execution of threats and attempts of theft of SNM and industrial sabotage are covered in the plan. The plan also includes mechanisms for initiating emergency plans to deal with radiological releases resulting from successful sabotage attempts, but it does not include the emergency plan operations themselves.



### 1.3.2 Operational Concept in Response to an Adversary Incursion

The primary security mission at REP Plants is to protect the plant facilities at all times, to prevent the theft or diversion of SNM, and to prevent the sabotage of plant equipment.

This mission is performed on a day-to-day basis by the security organization and facilities such as the access and egress control system operating in conjunction with the physical barriers and alarm systems that cover the protected area, the VAs, and the MAA.

To deal decisively with an adversary incursion against an REP Plant and thereby accomplish the mission under these extraordinary circumstances, the LLEA emergency response force will be requested immediately upon verification of such an incursion. While the LLEA response is developing, the Alpha Site security force will respond to ascertain and assess the adversary situation and, depending upon the perceived strength and nature of the incursion, to detain, neutralize, or delay the adversary until the LLEA arrives.

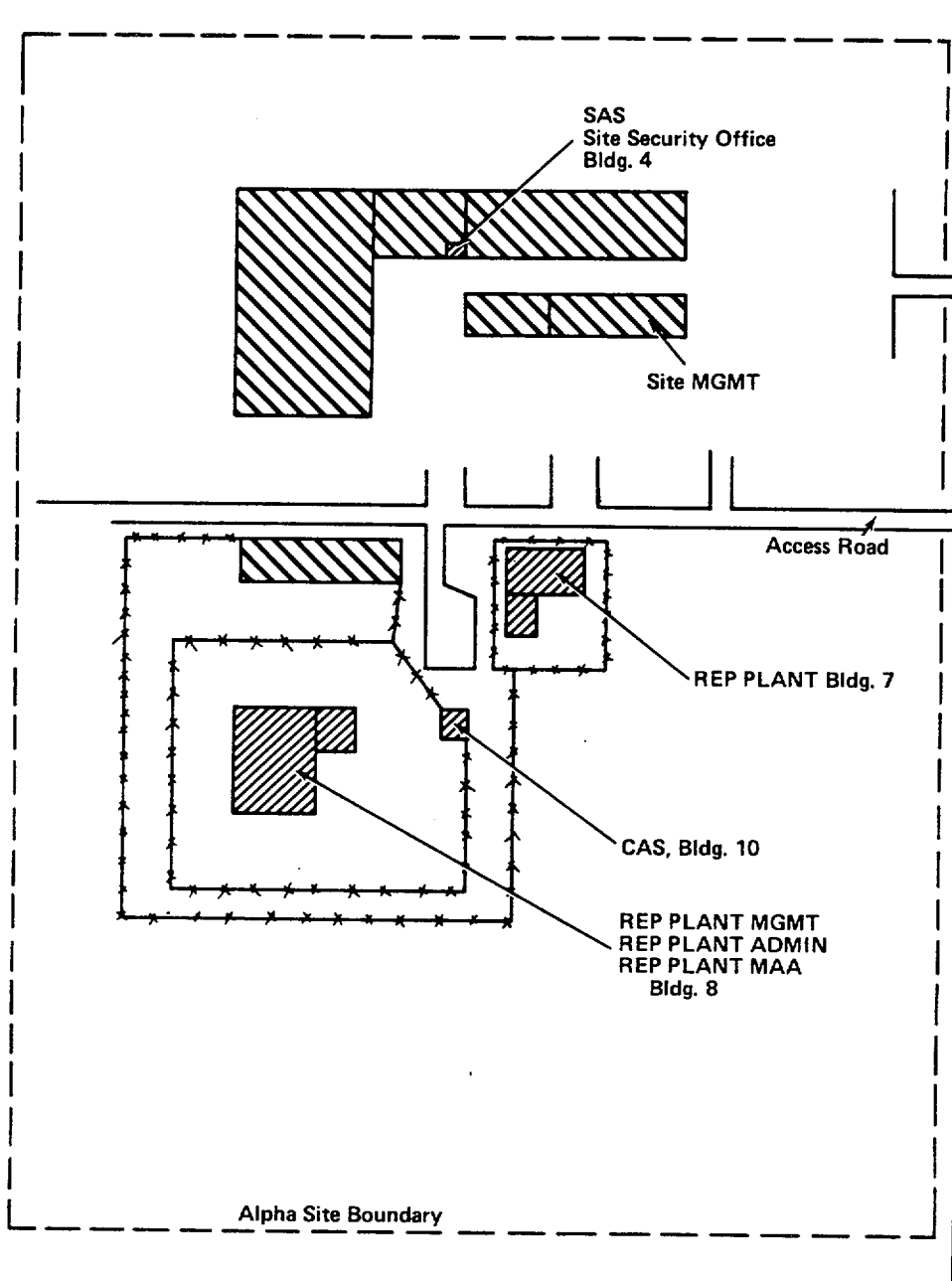
The Alpha Site security force will endeavor to fulfill the above role by intercepting an external adversary prior to penetration into Buildings 8, 10, or 7 (Figure 1). In the event the external adversary penetrates any of these buildings, and in cases of internal adversaries, the security force will attempt to intercept the adversary within the building or upon exit from the building, again depending upon the adversary's nature and strength. Concurrent with these actions, the security force will maintain a flow of situational information among themselves and REP Plant management to coordinate the onsite response actions, and to the LLEA response force to facilitate their effectiveness upon arrival.

As the situation develops, REP Plant security employees will assist in delaying the adversary whenever possible without jeopardizing their personal safety. In this regard, they will lock doors as necessary to secure the MAA and VA, deny information to the adversary, and report adversary and situational circumstances to REP Plant MGMT to assist in illuminating the situation.

### 1.4 DEFINITIONS

Terms and expressions appearing throughout the plan are alphabetically listed and defined below for ease of reference:

<u>Term</u>	<u>Definition</u>
(A)	Notation that indicates an action is always taken; the action may be a hedge against uncertainty or necessary in light of the situation.
(C)	Notation that indicates an action may or may not be taken depending upon obvious circumstances of the situation.
CAS	Central Alarm Station, Building 10, at Representative Plant.
FBI	Federal Bureau of Investigation.
LEA	Law Enforcement Agency.



**FIGURE 1 REP PLANT AT ALPHA SITE**

LLEA	Local Law Enforcement Agency.
Local Police Net	A mutual assistance police radio net operated by LLEA in the general vicinity of Alpha Site; Alpha Site guard force can enter/monitor this net.
MAA	Material Access Area.
MCA	Material Control and Accounting System.
NRC	U.S. Nuclear Regulatory Commission, Region ____, Office of Inspection and Enforcement.
Off-Dy Guards	Guards of the two normally off-duty shifts of the guard force at any given time.
REP Plant	Representative Plant at Alpha Site.
REP Plant ADMIN	Representative Plant employee group in the Administrative Area of Building 8, Alpha Site.
REP Plant Bldg. 7	Representative Plant employees in Building 7 area, Alpha Site.
REP Plant MAA	Representative Plant employees in the Material Access Area of Building 8, Alpha Site.
REP Plant MGMT	Senior onsite manager, REP Plant, with designated staff assistants at any given time.
RESPN Team	Alpha Site guards and volunteer employees who constitute an armed security response team to assist in safeguard of REP Plant facilities and materials in an emergency.
SAS	Secondary Alarm Station in Alpha Site Security Office, Building 4.
Site MGMT	The Alpha Site manager with designated staff assistants at any given time.
SNM	Special Nuclear Material.
Site Radio Comm Net	An operational radio net operated at Alpha Site by the site guard force.
VA	Vital Area.

## 2. GENERIC PLANNING BASE

Alpha Site Operational Elements indicated in Section 3.1 will respond as a team to events that either suggest or reveal an adversary incursion against REP Plant. The types of events experienced and the clarity of the situation at the time will depend on the nature of the incursion, the state to which the situation has progressed, and the amount of interaction that has occurred between the adversary and the operational elements. Therefore, the total response over time is a dynamic process conditioned by the circumstances of the situation as it progresses from start to finish.

For planning purposes, a set of 24 events has been selected to cover the range of events that will trigger contingency response actions. For each of these events, an objective has been selected that specifies the main purpose to be accomplished by the operational elements in response to the particular event. In general there are two types of decision/action sequences reflected in these objectives: (1) assessment decision/action sequences to determine the

situation and (2) preventive decision/action sequences against perceived attempts to steal or sabotage.

Appendix C summarizes the events and the corresponding objectives and codes each combination for ease of reference.

### 3. LICENSEE PLANNING BASE

#### 3.1 LICENSEE'S ORGANIZATION FOR SAFEGUARDS CONTINGENCY RESPONSE

The following operational elements are the organizational entities at Alpha Site adopted for purposes of assigning and executing security response tasks and procedures identified in this plan. Detailed composition of the operational elements is indicated in Appendix A.

<u>Functional Category</u>	<u>Operational Elements</u>
Security Forces	1. CAS 2. SAS 3. RESPN Team 4. Off-Dy Guards
Management	5. Site MGMT 6. REP Plant MGMT
REP Plant Operations	7. REP Plant ADMIN 8. REP Plant MAA 9. REP Plant Bldg 7

#### 3.2 PHYSICAL LAYOUT

See Figure 1, Subsection 1.3.2.

#### 3.3 LAW ENFORCEMENT INTERFACE ASSISTANCE

The following police forces have agreed to respond to Alpha Site's request for emergency law enforcement assistance to deal with adversaries who commit unlawful acts against Alpha Site property and/or employees. Appendix B presents the police response capabilities and the procedure for requesting emergency assistance.

<u>Category</u>	<u>Force</u>
LLEA	Red Town Police (Primary Contact) White Town Police Blue Town Police
County	Iron County Police
State	Steel State Police

In addition to the above area police, the local office of the FBI will provide FBI agents to investigate and deal with Federal crimes committed against REP Plant and to assist the area police as requested.

### 3.4 POLICY CONSTRAINTS AND ASSUMPTIONS

The following company policy constraints and assumptions are reflected in this plan and will influence the conduct of operational activities during execution:

a. REP Plant will depend upon local, county, state, and Federal law enforcement agencies to the maximum extent possible to protect Plant properties against adversary incursions and to recover stolen company property.

b. The employment of firearms against adversary incursions by Alpha Site employees will be governed by Steel State law. In general, this law permits a private citizen to employ firearms in those circumstances where the citizen has a reasonable belief that it is necessary in self defense or in defense of others when there is an immediate threat of death or grievous bodily injury.

c. Company operations to achieve contingency plan objectives will be conducted in a manner that avoids personal injury to company employees and other innocent bystanders.

d. Needless destruction or damage to company property and to other private and public properties will be avoided.

e. Excepting guards, no company employee can be directed to perform hazardous physical security duties to protect REP Plant; however, company employees who volunteer may perform such duties during emergency situations.

f. No company employee is expected to contribute his own personal property or off-duty time to support active contingency plan operations.

### 3.5 CONTROL AND COMMUNICATIONS

#### 3.5.1 Transition Control Procedure

a. REP Plant MGMT will direct the overall response actions of REP Plant in coordination with the Alpha Site Security Supervisor, who will coordinate the overall response of the security force.

b. Early security force response actions will be coordinated by the CAS if the response is directed to the REP Plant protected area. The SAS will coordinate the early response if it is directed to other Alpha Site locations.

c. During the early response period, the Security Supervisor will coordinate with the CAS and SAS to assume overall control of the security force response as soon as practical during the situation development.

d. Early offsite police response will be coordinated by Red Town Police. Initial contacts with Red Town Police will be by the CAS, or alternatively by the RESPN Team or CAS in the event such is necessary because of communications problems with the CAS.

e. Coordination with the local police response force onsite will be accomplished by way of the Security Supervisor and the Red Town Police. The Red Town Police will continue to coordinate the police response actions onsite.

3.5.2 Primary and Alternate Locations

a. REP Plant MGMT

Primary Locations: REP Plant Administrative Area  
Building 8  
Telephone (400) 374-6300 Ext. 693

Alternate Location: SAS, Site Security Office  
Building 4  
Telephone (400) 374-6300  
Ext. 211 or Ext. 316

b. Alpha Site Security Supervisor

Primary Location: SAS, Site Security Office  
Building 4  
Telephone (400) 374-6300  
Ext. 211 or Ext. 316

Alternate Location: CAS  
Building 10  
Telephone (400) 374-6300  
Ext. 540

c. Police Coordination Point on Alpha Site

Primary Location: SAS, Site Security Office  
Building 4  
Telephone (400) 374-6300  
Ext. 211 or ext. 316

Alternate Location: CAS  
Building 10  
Telephone (400) 374-6300  
Ext. 540

d. Use of alternate locations in lieu of the primary locations will be reported to and coordinated with the security supervisor.

3.5.3 Site Radio Comm Net

The Site Radio Comm Net comprises seven stations, six of which are portable. Call designations, initial location of equipment, number of channels, and uses of the stations are indicated below. Unit 100 at the CAS is the base station for net control. Appendix D outlines communications procedures.

<u>Station Designation</u>	<u>Initial Location</u>	<u>Number of Channels</u>	<u>Uses</u>
Unit 100 (Nonportable)	CAS	2	Channel 1: Net Base Station 2: Local Police Net
Unit 200 (Portable)	CAS	2	Channel 1: Patrols and RESPN Team 2: Local Police Net

Unit 300 (Portable)	CAS	2	Channel 1: Patrols and RESP Team 2: Local Police Net
Unit 400 (Portable)	CAS	2	Channel 1: Utility and Backup 2: Local Police Net
Unit 500 (Portable)	SAS	2	Channel 1: RESPN Team 2: Local Police Net
Unit 600 (Portable)	SAS	2	Channel 1: RESPN Team 2: Local Police Net
Unit 700 (Portable)	SAS	2	Channel 1: SAS 2: Local Police Net

#### 3.5.4 Local Police Net

There are nine stations as indicated below in the local police net, with the net control base station being operated at Blue Town. As indicated in paragraph 3.4.3 above, Channel 2 of the Site Radio Comm Net links with the local police net. Primary points of contact for the Alpha Site Security Force on entering the local police net using Channel 2 are Red Town Base and Car #4. Appendix D outlines the procedure.

<u>Station Designation</u>	<u>Use</u>
Blue Town Base	Net Control Base Station and Blue Town Control
Car #1	Blue Town Police Response
Car #2	Blue Town Police Response
Red Town Base	Red Town Control
Car #3	Red Town Police Response
Car #4	Red Town Police Response
White Town Base	White Town Control
Car #5	White Town Police Response
Car #6	White Town Police Response

#### 3.5.5 Silent Alarms and Intercoms

a. Silent alarm from CAS to SAS will be used by CAS to initially request RESPN Team response; followup communications will be via normal telephone channels.

b. Intercom within Building 8 will be used by REP Plant MGMT to alert and pass information to REP Plant ADMIN and REP Plant MAA elements. Normal telephone channels to Building 7 will be used in this regard for REP Plant Building 7 elements.

c. Intercom between CAS and Building 8 will be used for rapid communication of alert and other information in addition to normal telephone channels.

### 3.6 SAFEGUARDS SYSTEMS HARDWARE

This paragraph not used.

### 3.7 ADMINISTRATIVE AND LOGISTICAL PLANNING

#### 3.7.1 Radio Batteries

Portable radio batteries will be charged continuously when units are not in use. Spare replacement batteries will be available at the CAS and SAS.

#### 3.7.2 Arms and Ammunition

Extra ammunition for individual weapons will be available at the CAS and the SAS. Additionally, there are six 12-gauge shotguns with ammunition available, two at the CAS and four at the SAS.

#### 3.7.3 Emergency Services

The manager of health and safety services (Building 6, Telephone (400) 374-6300, Ext 740) will be prepared to furnish health physics, medical evacuation, firefighting, traffic control, and other emergency services in accordance with standard site emergency procedures. Site security forces will not be relied upon in effecting such preparations in order to ensure their availability for conducting safeguards contingency operations.

## 4. RESPONSIBILITY MATRIX

Within the context of the general responsibilities assigned to each operating element, the planning of detailed tasks to support the attainment of the contingency objectives (specified in the Generic Planning Base, Appendix C) has been accomplished through use of the Responsibility Matrix in Appendix E.

## 5. PROCEDURES SUMMARY

To facilitate training and plan implementation, a Procedures Summary for each operating element is contained in Appendix F. These procedures present the general responsibilities of the operating elements, the applicable standard operating procedures, and summaries of the contingency task sequences that are assigned to the elements in the Responsibility Matrix (Appendix E). In the event security contingencies that are not reflected in the contingency task sequences occur, operational elements will coordinate their response in accordance with the general responsibilities and standard operating procedures indicated in the procedures summary so as to accomplish the primary security mission (Subsection 1.3.2).



APPENDIX A

ALPHA SITE OPERATIONAL ELEMENTS

Alpha Site Operational Elements are manned normally as indicated below over a 24-hour period. Guard personnel are assigned to shifts in rotation from the list of Enclosure 1.\* Enclosure 1 also lists telephone numbers and addresses to expedite off-duty contacts. Enclosure 2 specifies the "chain-alert" procedure for alerting key personnel in the REP Plant security program who are off duty.

Operational Element	1 First Shift (8:00 am - 4:00 pm)	2 Second Shift (4:00 pm - 12:00 pm)	3 Third Shift (12:00 pm - 8:00 am)
1. CAS	Security Supv.	Guard	Guard
2. SAS	Guard	Security Supv.	Security Supv.
3. RESPN Team	**R. C. One **J. J. Two **W. E. Three Guard	Guard Guard Guard	Guard Guard Guard
4. Off-Duty Guards	Security Supv. Guard Guard Guard Security Supv. Guard Guard Guard	**R. C. One **J. J. Two **W. E. Three Security Supv. Guard Security Supv. Guard Guard Guard	**R. C. One **J. J. Two **W. E. Three Security Supv. Guard Security Supv. Guard Guard Guard
5. Site MGMT	W. L. Four	C. C. Five	J. K. Six
6. REP Plant	P. J. Seven R. T. Eight	D. R. Nine M. L. Ten	B. W. Eleven R. H. Twelve
7. REP Plant	_____	_____	_____
	_____	_____	_____
	_____	_____	_____
8. REP Plant MAA	_____	_____	_____
	_____	_____	_____
	_____	_____	_____
9. REP Plant Bldg. 7	_____	_____	_____
	_____	_____	_____
	_____	_____	_____
Totals:			
Guard Force	10	10	10
Volunteers	3	3	3
Management	3	3	3
Staff	--	--	--

- Enclosures:  
 \*1. Telephone and Address Roster  
 2. Off-Duty Alert Procedure

\* Omitted in this example.  
 \*\* RESPN Team volunteers from professional staff.

ENCLOSURE 2

APPENDIX A

ALERT PROCEDURE, KEY OFF-DUTY PERSONNEL

1. PURPOSE

The purpose of this alert procedure is to quickly and reliably pass alert information to key personnel of the REP Plant security program who are off duty. To accomplish this, alert codes and a chain sequence for communicating the codes will be employed.

2. ALERT CODES

<u>Code</u>	<u>Meaning</u>
GREEN	Return to normal state; <u>no alert</u>
YELLOW	<u>Standby</u> ; be prepare to depart immediately for Alpha Site to assist in dealing with an emergency situation.
ORANGE	<u>Assemble immediately</u> at Alpha Site Security Office to assist in dealing with an emergency situation; <u>arms are not required</u> .
RED	<u>Assemble immediately</u> at Alpha Site to assist in dealing with an emergency situation; <u>arms are required</u> .

3. CHAIN-ALERT PROCEDURE

To rapidly disseminate the above alert codes, alert groups are organized as indicated below. The SAS will trigger the alert procedure for off-duty personnel by contacting the top listed person in each of the off-duty groups, or alternatively the next lower person in the group, and communicate to him the appropriate alert message code, e.g., "This is the SAS; ORANGE alert as of 10:30 p.m." The person contacted by the SAS in each group is responsible for communicating the alert to others of that group and for starting his response to the substance of the alert message within 5 minutes after his receipt of the alert.

ALERT GROUP 1:

Off-Duty Phone

\*R. C. One  
\*J. J. Two  
\*W. E. Three  
\*P. J. Seven  
Security Supervisor  
Guard

ALERT GROUP 2 (Those on Second Shift)

Security Supervisor \_\_\_\_\_  
Guard \_\_\_\_\_  
Guard \_\_\_\_\_  
Guard \_\_\_\_\_

ALERT GROUP 3 (Those on Third Shift)

Security Supervisor \_\_\_\_\_  
Guard \_\_\_\_\_  
Guard \_\_\_\_\_  
Guard \_\_\_\_\_

\*  
Volunteers from professional staff.

APPENDIX B

LAW ENFORCEMENT ASSISTANCE

1. POLICE RESPONSE FORCES

a. Onsite Response

The following listed police capability is planned by the law enforcement agencies indicated for immediate response to emergency requests for police assistance at Alpha Site. The strength of the response will depend upon adversary strength and the circumstances of the particular situation.

<u>Force</u>	<u>Strength</u>	<u>Equipment</u>
Red Town Police White Town Police Blue Town Police	2 Officers within 5 minutes 4 Officers within 10 minutes	Each equipped with pistol and shotgun, riot control and gas equipment, radio, and police cruiser.
Iron County Police	4 Officers within 15 minutes	Equipped with pistols, shotguns, and rifles, 2 police cruisers with radios.
Steel State Police	4 Officers within 30 minutes	Equipped with pistols, automatic rifles, 4 police cruisers with radios.

b. Area Response

In addition to the above onsite response, county and State police are prepared to cordon off the immediate and general area of Alpha Site if warranted by the situation by establishing road blocks and traffic checkpoints as indicated on the enclosed\* map. Times required from receipt of request until establishment of the respective operations are indicated below:

<u>Operation</u>	<u>Time to Set Up</u>	<u>Responsibility</u>
Road Blocks A,B,C	10 to 15 Minutes	Iron County Police
Road Block D	Within 10 Minutes	Iron County Police
Traffic Check Points 1 through 7	20 to 30 Minutes	Steel State Police

When the traffic checkpoint operations are executed, Steel State Police will place a police helicopter (BAT-4) in operation over the general area of Alpha Site to assist in communications and in chase operations that might ensue. County and State police cruisers will monitor Channel 3 for communications with BAT-4.

c. FBI Response

FBI agents from Purple City FBI Office will assist local, county, and State police operations where possible and will investigate infractions of Federal law against Alpha Site.

\* Omitted in this example.

In general, special agents can be active at Alpha Site within 1 to 3 hours after notification of the FBI. Special SWAT Team capabilities and negotiating skills are available with the FBI response if needed.

2. ALPHA SITE INTERFACE WITH POLICE

a. Contact Points to Request Police Assistance

Red Town Police is the principle point of contact for Alpha Site to obtain and coordinate with police response forces. Requests for police response can be made by telephone or by radio to the following points of contact:

Telephone	Red Town Chief of Police Telephone _____
Radio (Site Alpha Channel 2)	Red Town Base

b. Information with Requests

When police response is requested, the following information should be provided to the police to the extent that it is known in order that an appropriate response force can be assembled.

- Approximate number of adversaries.
- Adversary weapon types (i.e., unarmed or armed with pistols, shotguns, rifles, automatic weapons, etc.).
- Adversary mood (i.e., peaceful, violent).
- Adversary general activity (e.g., breaking into plant, demonstration, etc.).

c. Police Force Assembly and Response

Based on information furnished by Alpha Site, Red Town Police will request additional police response assistance as needed to deal with the situation on Alpha Site. Police response forces will assemble at Alpha Site without delay, obtain latest information on the situation, and then move to deal with the adversary. Red Town Police will coordinate police response actions onsite. Alpha Site Security Officer will serve as the principal point of contact for coordination between Alpha Site Operational Elements and the police response force.

Requests for county and State police action to establish road blocks and traffic checkpoints will be made through Red Town police as indicated above. Information to facilitate identification of adversary, such as number and descriptions of persons and their transportation, license numbers, etc., should be provided with such requests.

APPENDIX C

EVENTS AND OBJECTIVES FOR CONTINGENCY RESPONSES

ID Code	Events	REP Plant Response Objectives	*Conditional Jumps if	
			Affirmative	Negative
P1	A threat to steal SNM from REP Plant or to sabotage REP Plant is received via message or third party report.	Determine if the threat as perceived is serious.	To P4	None
P2	An accumulation of anomalies suggests someone might be planning to steal SNM from REP Plant.	Determine if the threat as perceived is serious.	To P4	None
P3	An offsite civil disturbance is occurring that could evolve into an attempt to penetrate REP Plant or that could be a cover for such an attempt.	Determine if the threat as perceived is serious.	To P9	None
P4	REP Plant management perceives that P1 or P2 type of event is a serious threat to steal or to sabotage at REP Plant.	Prevent theft of SNM or sabotage of vital equipment.	To P7, P8, P10, P11, P12, P13, P14, P15, P20, P21	None
P5	A duly constituted authority warns REP Plant that an expressed or implied threat constitutes a serious threat to steal SNM or to sabotage at REP Plant.	Prevent theft of SNM or sabotage of vital equipment.	To P7, P8, P10, P11, P12, P13, P14, P15, P20, or P21	None
P6	A duly constituted authority informs REP Plant that a threat to use SNM has occurred that warrants an item count inventory at REP Plant.	Determine if licensed SNM is missing from REP Plant.	To P23	None
P7	An indication suggesting a possible imminent or in-process penetration of REP Plant is received at the CAS.	Determine the perceived magnitude of danger to REP Plant.	To P17, P18, or P19	None

5.55-22

\* See Enclosure 1, Appendix C.

APPENDIX C (Continued)

ID Code	Events	REP Plant Response Objectives	*Conditional Jumps if	
			Affirmative	Negative
P8	An indication suggesting a possible imminent or in-process penetration of REP Plant is perceived on Alpha Site by other than the CAS.	Determine the perceived magnitude of danger to REP Plant.	To P17	None
P9	A civil disturbance escalates in intensity or proximity and is perceived as a possible imminent penetration of REP Plant.	Determine the perceived magnitude of danger to REP Plant.	To P17	None
P10	An emergency evacuation of REP Plant occurs.	Determine the perceived possibility of SNM theft or sabotage.	To P16	None
P11	Material control and accounting records are damaged, destroyed, altered, or missing.	Determine the perceived possibility of SNM theft.	To P21	None
P12	An intrusion alarm located at the MAA or a VA annunciates, suggesting the possibility of SNM theft or sabotage in progress.	Determine the perceived possibility of SNM theft or sabotage.	To P16	None
P13	The SNM detector or the metal detector in REP Plant Administrative area annunciates, suggesting the possibility that internal theft of SNM is in progress.	Determine the perceived possibility of SNM theft.	To P16	None
P14	An event occurs which temporarily degrades certain security safeguards and suggests that an opportunity exists for an attempted theft or sabotage at REP Plant.	Determine the perceived possibility of SNM theft or sabotage.	To P16	None
P15	A personnel disturbance occurs at REP Plant that might be a cover for an attempted theft or sabotage.	Determine the perceived possibility of SNM theft or sabotage.	To P16	None
P16	REP Plant Management perceives a possibility of an internal theft or sabotage attempt.	Prevent theft of SNM or sabotage of vital equipment.	To P24 or P22	None

5.55-23

\* See Enclosure 1, Appendix C.

APPENDIX C (Continued)

ID Code	Events	REP Plant Response Objectives	*Conditional Jumps if	
			Affirmative	Negative
P17	A penetration of REP Plant is in progress or is perceived as imminent.	Prevent theft of SNM or sabotage of vital equipment.	To P18 or P19	None
P18	REP Plant has been penetrated, and the plant is held hostage.	Prevent theft of SNM or sabotage of vital equipment.	To P19 or P22	None
P19	REP Plant protection was overcome by an external attack; the adversary penetrated into the plant and then escaped.	Determine if SNM has been stolen or radioactivity dispersed.	To P24 or P22	None
P20	Physical evidence at REP Plant suggests possibilities that a previously undetected intrusion and theft of SNM has occurred.	Determine if SNM has been stolen.	To P24	None
P21	Material control and accounting system indicates the possibility of theft of SNM.	Determine if SNM has been stolen.	To P23	None
P22	REP Plant has suffered sabotage resulting in dispersal of radioactivity.	Restore protection to remaining SNM.	To P23	None
P23**	REP Plant MGMT determines from the Material Control and Accounting System that SNM is missing.	Submit required reports to NRC; request recovery.	-----	----
P24**	REP Plant Management determines that SNM has been stolen.	Submit required reports to NRC; request recovery.	-----	----

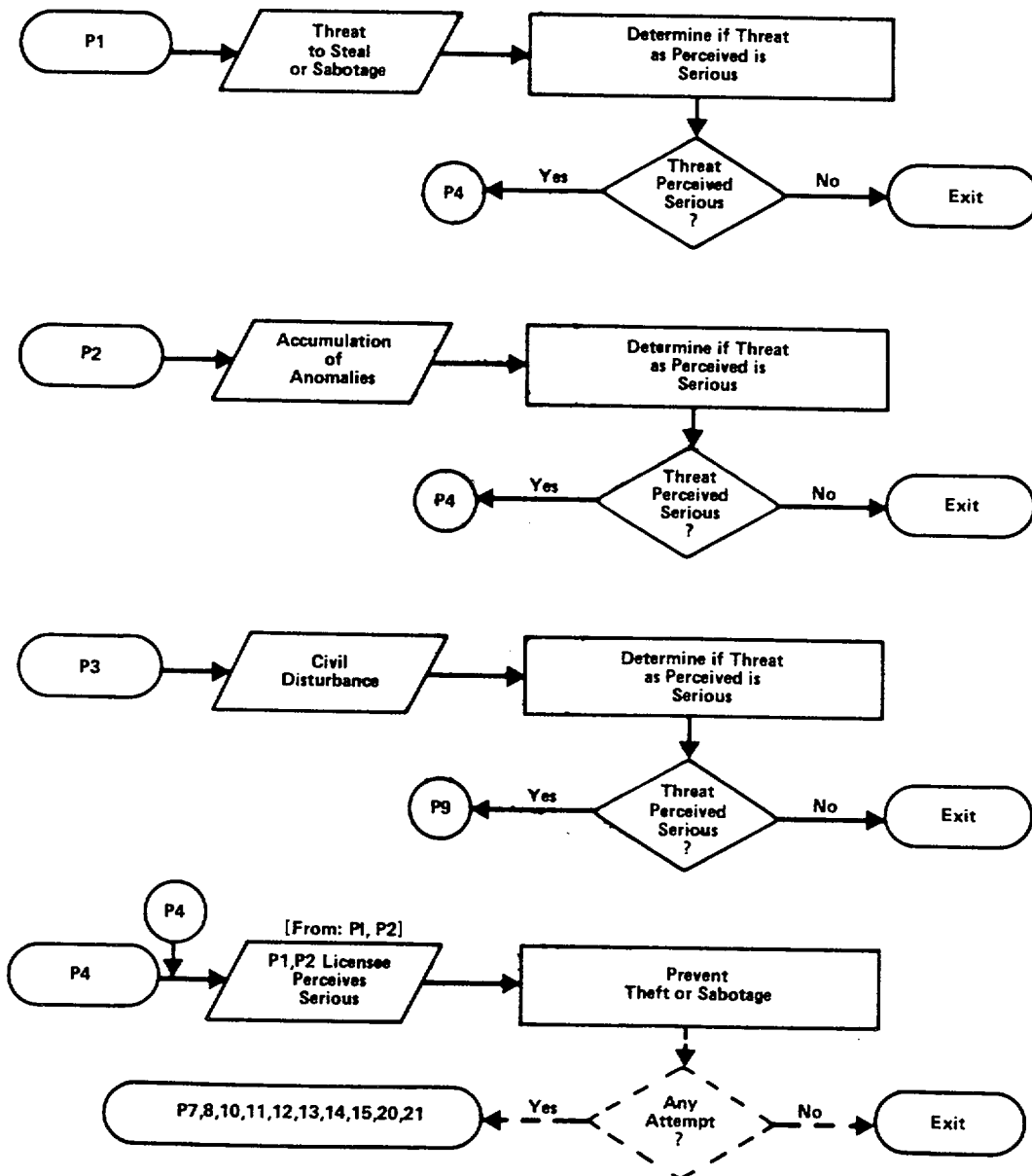
5.55-24

\* See Enclosure 1, Appendix C.  
 \*\*Not included in Responsibility Matrix; the Federal Government (FBI) is responsible for investigations to recover SNM.

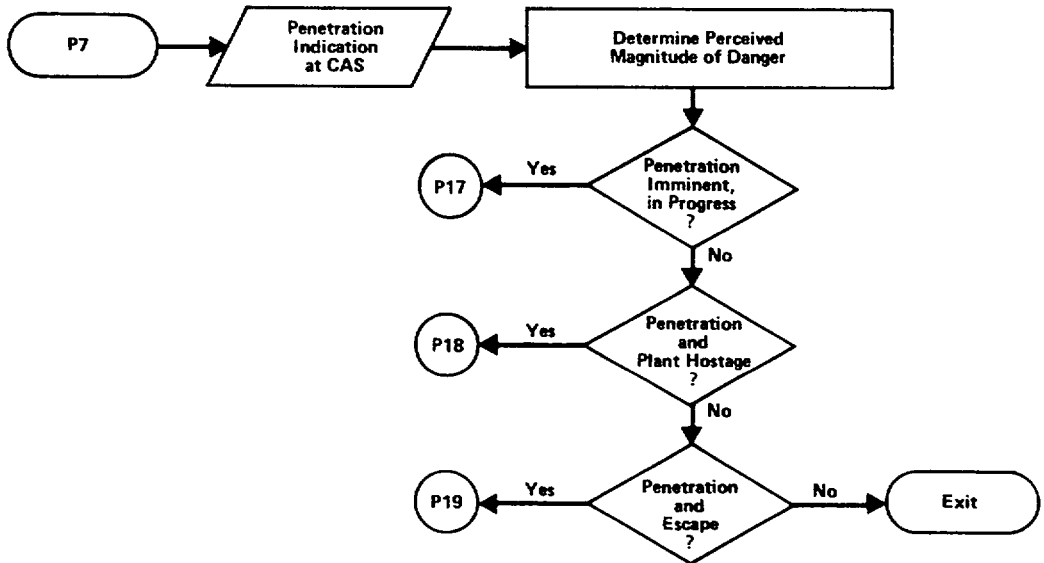
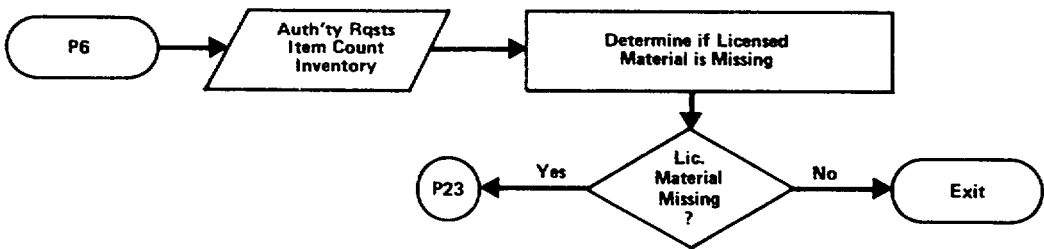
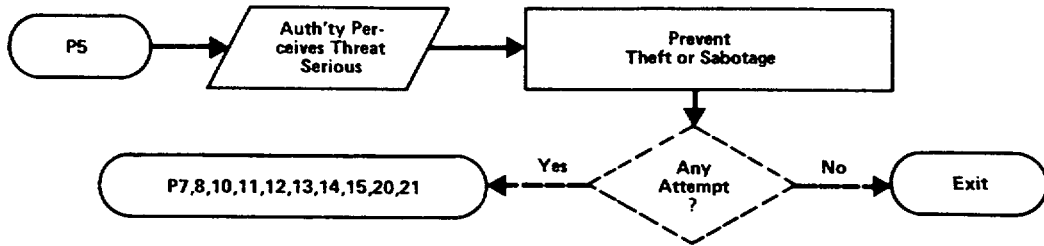
Enclosure 1

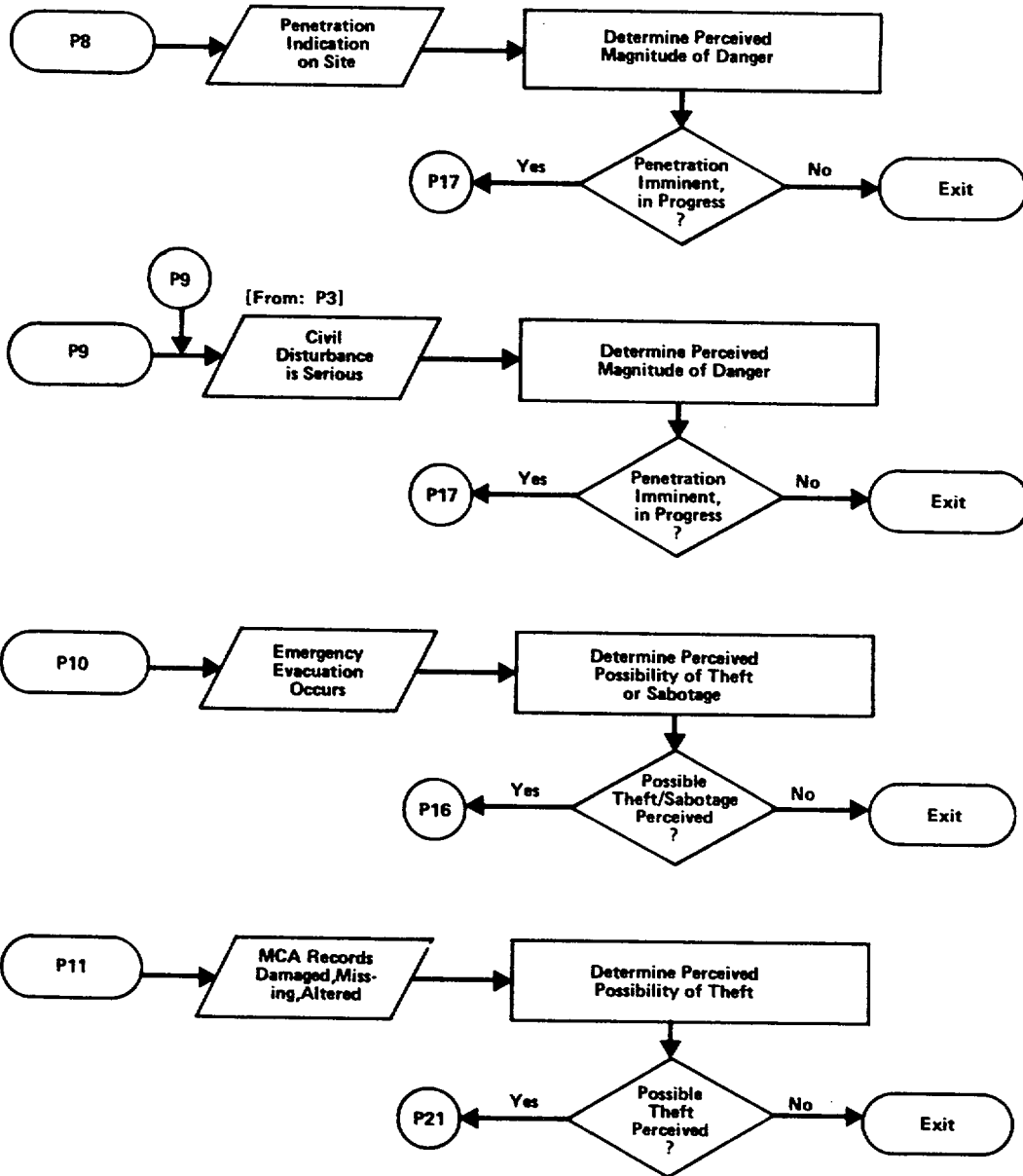
Appendix C

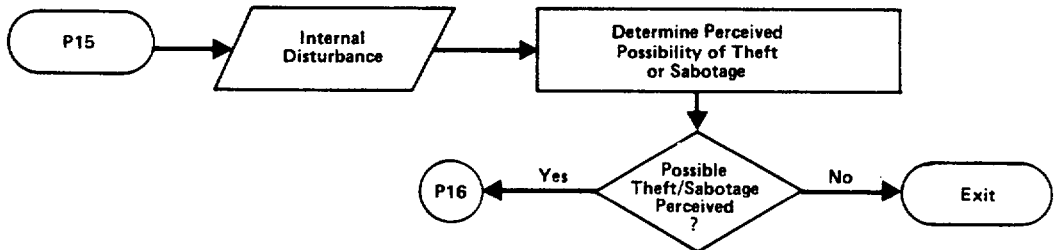
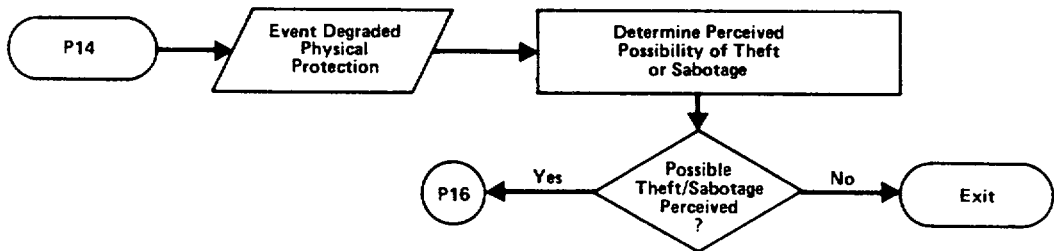
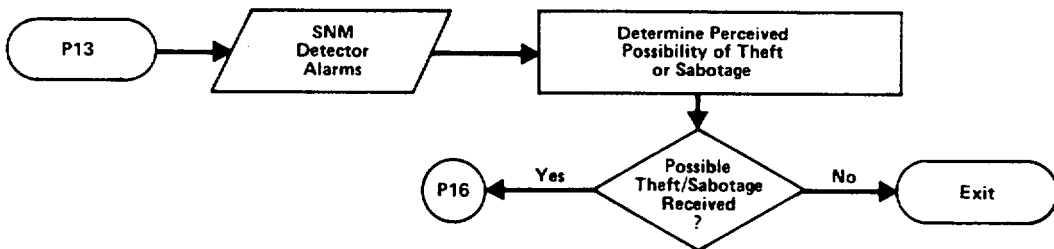
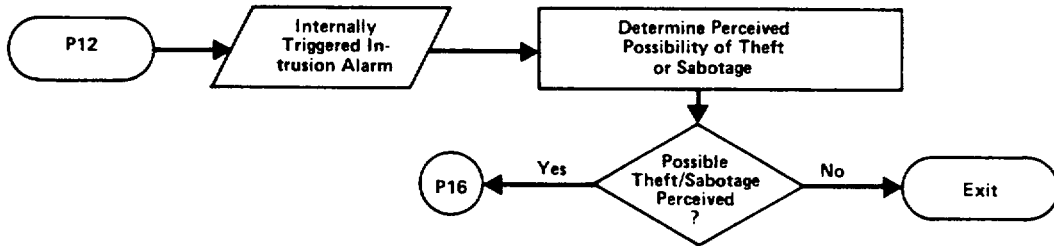
EVENT/OBJECTIVES INTERRELATIONSHIPS

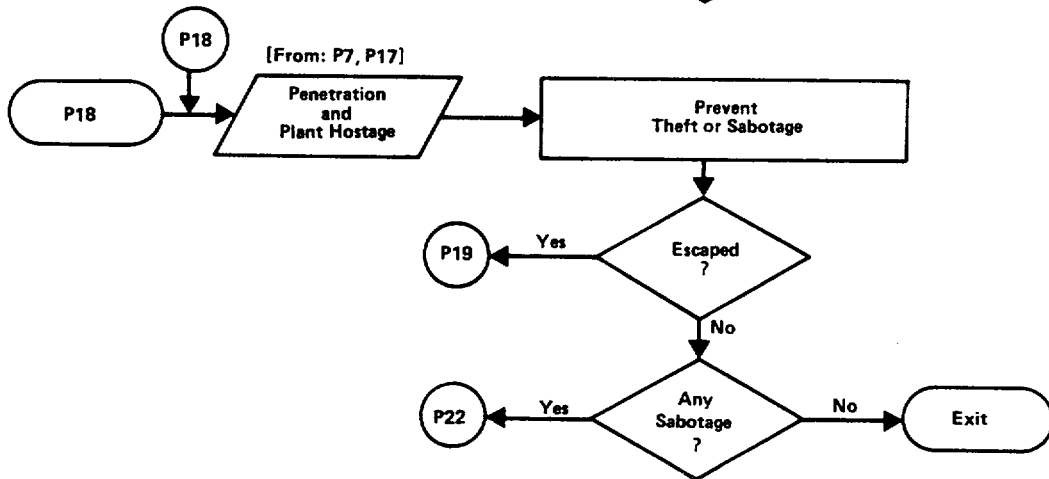
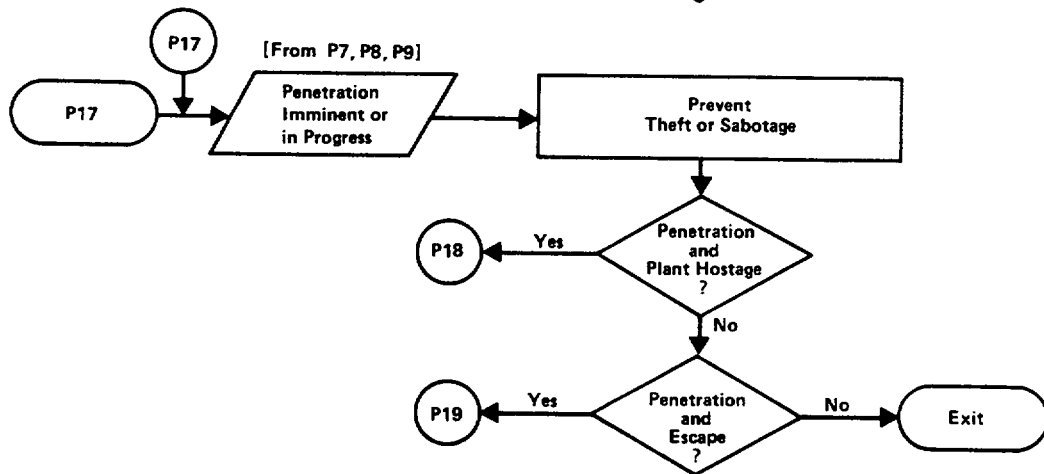
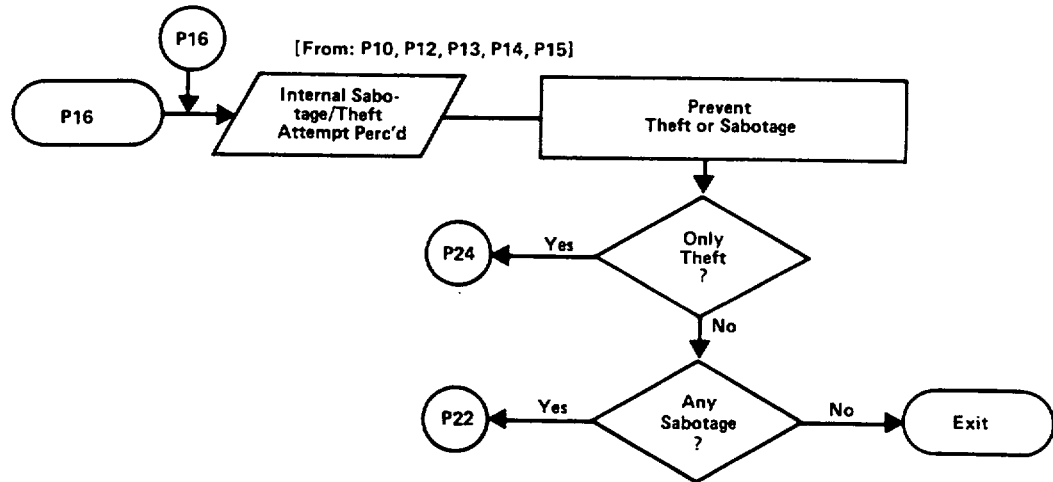


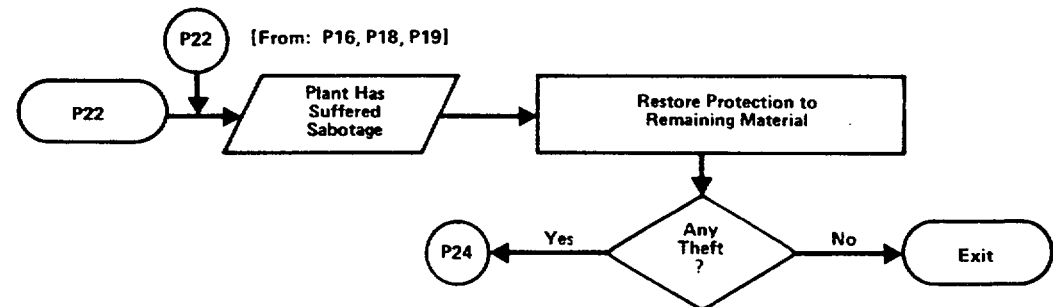
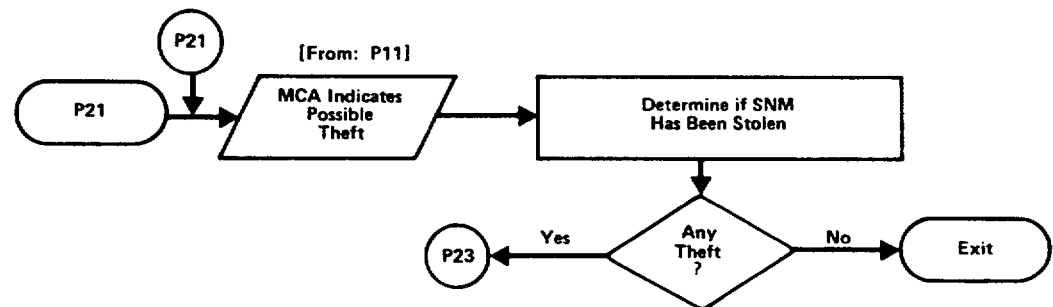
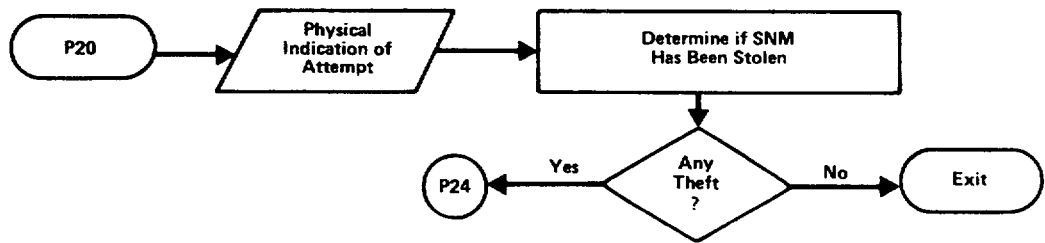
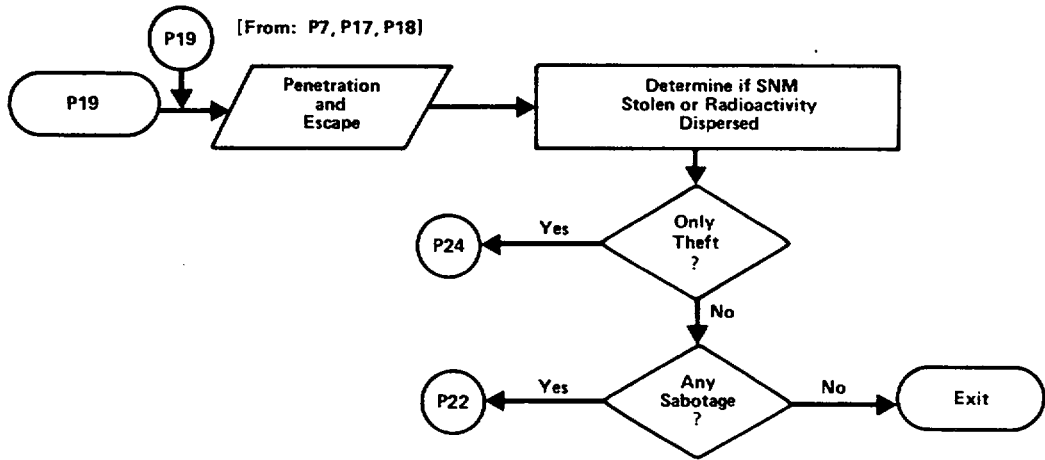


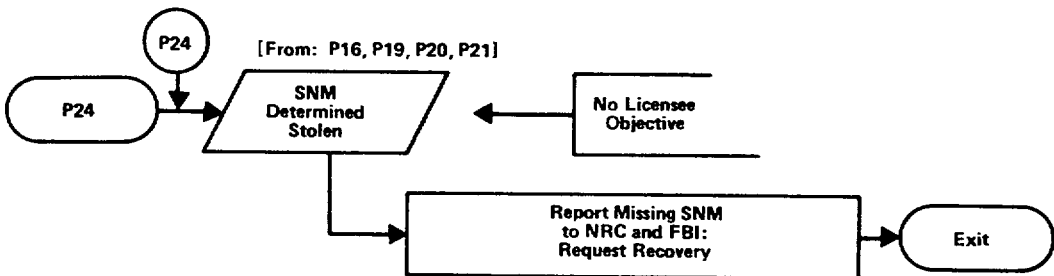
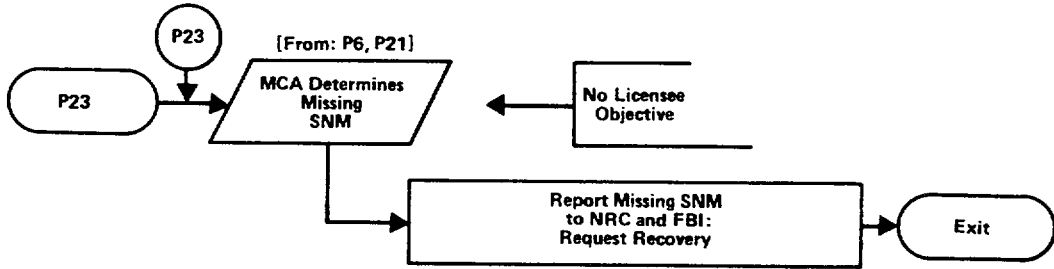












APPENDIX D

COMMUNICATION PROCEDURES

1. PURPOSE

To outline procedures for use of radio equipment by the Alpha Site security force.

2. EQUIPMENT

Radio equipment for the security force includes one stationary and 6 portable transmitter-receiver units. Each unit can be operated on one of two possible channels by setting the frequency selector switch to the Channel 1 or Channel 2 position. Channel uses are as follows:

Channel 1	-	Site Radio Comm Net
Channel 2	-	Local Police Net

3. SITE RADIO COMM NET

a. All units will operate normally in the Site Radio Comm Net - i.e., Channel 1 for coordination and direction of Alpha Site security force operations. Station designations and normal employment are as follows:

<u>Station Designation</u>	<u>Initial Location</u>	<u>Employment</u>
Unit 100 (Nonportable)	CAS	Site Radio Comm Net Base Station
Unit 200 (Portable)	CAS	Patrols or RESPN Team
Unit 300 (Portable)	CAS	Patrols or RESPN Team
Unit 400 (Portable)	CAS	Utility and Backup
Unit 500 (Portable)	SAS	RESPN Team
Unit 600 (Portable)	SAS	RESPN Team
Unit 700 (Portable)	SAS	SAS

b. Communication Code Words:

Meaning

ROGER	I have received your transmission OK.
WILCO	I have received your request, and I will comply with the request.
OVER	I have finished transmitting and am awaiting your reply.

OUT	I have finished transmitting this message, and the channel is now free for others to use.
REPEAT	Repeat your transmission. I did not receive it.
REPEAT AFTER	Repeat your transmission after the word _____; I did not receive it.
AFFIRMATIVE	The answer to your question is yes.
NEGATIVE	The answer to your question is no.

c. Net Call Sign: ALPHA 6

The net call sign will be used whenever a unit terminates his transmission with "Out", thereby indicating that he has finished use of the Channel at that time, e.g.,

"This is ALPHA-6 Unit 400; wilco; out."

d. Base Station Control:

Unit 100 at CAS is the Net Base Station and must be aware of every unit that is active in the net. Therefore, all units will report entry into and departure from the net to the base station, e.g.,

Unit 300 reports entry:

Unit 300: "Unit 100, this is Unit 300; entering net; over."

Base: "This is ALPHA-6, Unit 100; Roger; out."

Unit 300 reports departure:

Unit 300: "Unit 100, this is Unit 300; am switching to Channel 2; over."

Base: "This is ALPHA-6, Unit 100; Roger; out."

e. Operating Constraints:

1. Units will not use the channel whenever it is being used by other units. Termination of a transmission with "over" indicates the channel is still in use and has not been released for others to use. Termination of a transmission with "out" indicates the channel has been released for others to use.

2. Units will minimize transmission time by shortening conversation exchanges and keeping message content as short as possible consistent with clarity in meaning.

4. LOCAL POLICE NET

a. Site Radio Comm Net Units can enter the Local Police Net by switching to Channel 2 and reporting entry to Blue Town Base Station, e.g.,

"Blue Town Base, this is ALPHA-6, Unit 600; entering Net; over."

When Blue Town Base acknowledges the entry, the ALPHA-6 Unit is recognized as active in the net.



b. The "ALPHA-6 Unit \_\_\_\_" designation will always be used to identify an Alpha Site unit that is operating in the Local Police Net.

c. Local Police Net station designations and identities are as follows:

<u>Station Designation</u>	<u>Identification</u>
Blue Town Base	Net Control Station and Blue Town Police Control.
Car #1	Blue Town Police Response
Car #2	
Red Town Base	Red Town Police Control
Car #3	Red Town Police Response
Car #4	
White Town Base	White Town Police Control
Car #5	White Town Police Response
Car #6	

d. Site Radio Comm Net units will report departure from the Local Police Net to Blue Town Base.

#### 5. TESTS AND MAINTENANCE

a. CAS and SAS will perform a communication check with both channels of each unit that is not in use at least once per shift.

b. Portable units will be charged continuously when the units are not in use.

APPENDIX E

RESPONSIBILITY MATRIX

### RESPONSIBILITY MATRIX

P1-1

EVENT	1 CAS	2 SAS	3 RESPN TEAM	4 OFF-DY GUARDS	5 SITE MGMT
<p>THREAT TO STEAL SNM FROM REP PLANT OR TO SABOTAGE RECEIVED VIA MESSAGE OR THIRD PARTY REPORT</p> <p><u>Objective</u> DETERMINE IF THREAT AS PERCEIVED IS SERIOUS</p>			<p><u>General Task</u></p> <p>Report all threat information to REP Plant MGMT and Alpha Site Security Officer without delay. (A)</p> <hr style="border-top: 1px dashed black;"/>		

5.55-36

## RESPONSIBILITY MATRIX

P1-2

6 REP PLANT MGMT	7 REP PLANT ADMIN	8 REP PLANT MAA	9 REP PLANT BLDG 7	10 LOCAL-COUNTY-STATE LAW ENFORCEMENT
<p>DETERMINE IF THREAT AS PERCEIVED IS SERIOUS</p> <ul style="list-style-type: none"> <li>- Assemble available information on threat &amp; adversary (A)</li> <li>- Report threat to NRC; to company headquarters; to law enforcement agencies as applicable; request any pertinent information that might be available. (A)</li> <li>- Analyze available information to assess threat. (A)</li> <li>- Decide if threat should be considered serious. (A)</li> <li>- If threat is perceived serious, go to Event P4. (A)</li> </ul>				<p>- Assist REP Plant's assessment of threat as requested. (A)</p>

← General Task →

Report all threat information to REP Plant MGMT and Alpha Site Security Officer without delay.

-----

5.55-37

## RESPONSIBILITY MATRIX

P2-1

EVENT	1 CAS	2 SAS	3 RESPN TEAM	4 OFF-DY GUARDS	5 SITE MGMT
<p>ACCUMULATION OF ANOMALIES SUGGESTS SOMEONE MIGHT BE PLANNING TO STEAL SNM FROM REP PLANT.</p> <p><u>Objective</u></p> <p>DETERMINE IF THREAT AS PERCEIVED IS SERIOUS</p>	<p>← <u>General Task</u> →</p> <p>Report any observed anomalies and suspicions related thereto to REP Plant MGMT and Alpha Site Security Officer. (A)</p> <hr style="border-top: 1px dashed black;"/>				

5.55-38

## RESPONSIBILITY MATRIX

P2-2

6 REP PLANT MGMT	7 REP PLANT ADMIN	8 REP PLANT MAA	9 REP PLANT BLDG 7	10 LOCAL-COUNTY-STATE LAW ENFORCEMENT
<p>DETERMINE IF THREAT AS PERCEIVED IS SERIOUS.</p> <ul style="list-style-type: none"> <li>- Assemble available information on reported anomalies and the circumstances surrounding their occurrence. (A)</li> <li>- Analyze the available information to assess the threat that is inferred. (A)</li> <li>- Decide if the inferred threat should be considered serious. (A)</li> <li>- If threat is perceived serious, go to Event P4. (A)</li> </ul>	<p>← <u>General Task</u> →</p> <p>Report any observed anomalies and suspicions related thereto to REP Plant MGMT and Alpha Site Security Officer. (A)</p> <hr style="border-top: 1px dashed black;"/>			<p>NA</p>

5.55-39

**RESPONSIBILITY MATRIX**

P3-1

EVENT	1 CAS	2 SAS	3 RESPN TEAM	4 OFF-DY GUARDS	5 SITE MGMT
<p>AN OFFSITE CIVIL DISTURBANCE IS OCCURRING THAT COULD EVOLVE INTO AN ATTEMPT TO PENETRATE REP PLANT OR THAT COULD BE A COVER FOR SUCH AN ATTEMPT.</p> <p><u>Objective:</u> DETERMINE IF THREAT AS PERCEIVED IS SERIOUS.</p>	<p align="center">←----- General Task -----→</p> <p>Inform REP Plant MGMT and Alpha Site Security Officer about known offsite civil disturbances and related information without delay. (A)</p> <hr style="border-top: 1px dashed black;"/>	<p>- Monitor civil disturbance situation via local police or other offsite sources; keep REP Plant MGMT informed, as appropriate. (A)</p>	<p>- When directed by Alpha Site Security Officer, move to scene of disturbance; monitor and report situation to SAS. (A)</p>		

5.55-40

### RESPONSIBILITY MATRIX

P3-2

6 REP PLANT MGMT	7 REP PLANT ADMIN	8 REP PLANT MAA	9 REP PLANT BLDG 7	10 LOCAL-COUNTY-STATE LAW ENFORCEMENT
<p>DETERMINE IF THREAT AS PERCEIVED IS SERIOUS</p> <ul style="list-style-type: none"> <li>- As applicable, inform Alpha Site Security Officer of civil disturbance and related information. (C)</li> <li>- Report circumstances of disturbance to NRC and to company headquarters as appropriate. (C)</li> <li>- Monitor and assess circumstances of disturbance. (A)</li> <li>- Decide if disturbance as perceived should be considered a serious threat. (A)</li> <li>- If threat is perceived serious, go to Event P9.</li> </ul>	<p>← <u>General Task</u> →</p> <p>Inform REP Plant MGMT and Alpha Site Security Officer about known offsite civil disturbances and related information without delay. (A)</p> <hr style="border-top: 1px dashed black;"/>			<ul style="list-style-type: none"> <li>- As applicable, inform REP Plant about civil disturbance and related information. (C)</li> </ul>

5.55-41



### RESPONSIBILITY MATRIX

P4-1

EVENT	1 CAS	2 SAS	3 RESPN TEAM	4 OFF-DY GUARDS	5 SITE MGMT
<p>REP PLANT MGMT PER-CEIVES THAT EVENT P1 OR P2 CONSTITUTES SERIOUS THREAT TO STEAL SNM OR TO SABOTAGE.</p> <p><u>Objective:</u></p> <p>PREVENT THEFT OF SNM OR SABOTAGE OF VITAL EQUIPMENT.</p>	<p style="text-align: center;">←-----</p>	<p style="text-align: center;">General Task</p> <p style="text-align: center;">-----&gt;</p> <p>Perform additional security surveillance of REP Plant as directed by Alpha Site Security Officer or REP Plant MGMT. (A)</p> <hr style="border-top: 1px dashed black;"/> <ul style="list-style-type: none"> <li>- Brief On-Duty and Off-Duty Guards about threat. (A)</li> <li>- Reinforce REP Plant Building 10 and guard patrols as directed by Alpha Site Security Officer or REP Plant MGMT. (A)</li> <li>- Place Off-Duty Guards on on-call alert as directed by Alpha Site Security Officer or REP Plant MGMT. (A)</li> </ul>		<ul style="list-style-type: none"> <li>- Maintain on-call alert status as directed by SAS. (A)</li> </ul>	<ul style="list-style-type: none"> <li>- Be prepared to provide emergency supporting services when requested by REP Plant MGMT. (A)</li> </ul>

5.55-42

### RESPONSIBILITY MATRIX

P4-2

6 REP PLANT MGMT	7 REP PLANT ADMIN	8 REP PLANT MAA	9 REP PLANT BLDG 7	10 LOCAL-COUNTY-STATE LAW ENFORCEMENT
<p>PREVENT THEFT OF SNM OR SABOTAGE OF VITAL EQUIPMENT</p> <ul style="list-style-type: none"> <li>- Report assessment of threat to NRC; to company headquarters; to Site MGMT. (A)</li> <li>- In coordination with company headquarters and Site MGMT as appropriate, inform local, county, and State law enforcement of threat, and request assistance as applicable. (A)</li> <li>- Direct REP Plant and Alpha Site Security Officer to increase vigilance as appropriate to situation. (A)</li> <li>- Monitor on-going threat situation and be prepared to take further action as appropriate. (A)</li> </ul>	<p>←</p>	<p>General Tasks</p> <p>(1) Perform additional security surveillance of REP Plant as directed by Alpha Site Security Officer or REP Plant MGMT. (A)</p> <p>(2) Be prepared to assist in securing REP Plant MAA, vital areas, and buildings when alerted. (A)</p> <hr style="border-top: 1px dashed black;"/>	<p>→</p>	<p>-Be prepared to respond to REP Plant's request for assistance. (A)</p>

5.55-43

### RESPONSIBILITY MATRIX

P5-1

EVENT	1 CAS	2 SAS	3 RESPN TEAM	4 OFF-DY GUARDS	5 SITE MGMT
<p>DULY CONSTITUTED AUTHORITY PERCEIVES THAT AN EXPRESSED OR INFERRED THREAT CONSTITUTES A SERIOUS THREAT TO STEAL SNM FROM REP PLANT OR TO SABOTAGE REP PLANT.</p> <p><u>Objective:</u></p> <p>PREVENT THEFT OF SNM OR SABOTAGE OF VITAL EQUIPMENT</p>		<p>← General Task →</p> <p>Perform additional security surveillance of REP Plant as directed by Alpha Site Security Officer or REP Plant MGMT. (A)</p> <hr style="border-top: 1px dashed black;"/> <ul style="list-style-type: none"> <li>- Brief On-Duty and Off-Duty Guards about threat. (A)</li> <li>- Reinforce REP Plant Building 10 and guard patrols as directed by Alpha Site Security Officer or Rep Plant MGMT. (A)</li> <li>- Place Off-Duty Guards on on-call alert as directed by Alpha Site Security Officer or REP Plant MGMT. (A)</li> </ul>		<p>- Maintain on-call alert status as directed by SAS. (A)</p>	<p>- Be prepared to provide emergency supporting services when requested by REP Plant MGMT. (A)</p>

5.55-44

## RESPONSIBILITY MATRIX

P5-2

6 REP PLANT MGMT	7 REP PLANT ADMIN	8 REP PLANT MAA	9 REP PLANT BLDG 7	10 LOCAL-COUNTY-STATE LAW ENFORCEMENT
<p>PREVENT THEFT OF SNM OR SABOTAGE OF VITAL EQUIPMENT.</p> <ul style="list-style-type: none"> <li>- Report assessment of threat to NRC; to company headquarters; to Site MGMT. (A)</li> <li>- In coordination with company headquarters and Site MGMT, as appropriate, inform local, county, and State law enforcement of threat, and request assistance as applicable. (A)</li> <li>- Direct REP Plant and Alpha Site Security Officer to increase vigilance as appropriate to situation. (A)</li> <li>- Monitor on-going threat situation and be prepared to take further action as appropriate. (A)</li> </ul>		<p style="text-align: center;">← <u>General Tasks</u> →</p> <ol style="list-style-type: none"> <li>(1) Perform additional security surveillance of REP Plant as directed by Alpha Site Security Officer or REP Plant MGMT. (A)</li> <li>(2) Be prepared to assist in securing REP Plant MAA, vital areas, and buildings when alerted. (A)</li> </ol>		<ul style="list-style-type: none"> <li>- Be prepared to respond to REP Plant's request for assistance. (A)</li> </ul>

5.55-45

### RESPONSIBILITY MATRIX

P6-1

EVENT	1 CAS	2 SAS	3 RESPN TEAM	4 OFF-DY GUARDS	5 SITE MGMT
<p>A DULY CONSTITUTED AUTHORITY PERCEIVES THAT A THREAT TO USE SNM WARRANTS AN ITEM COUNT INVENTORY AT REP PLANT.</p> <p><u>Objective:</u> DETERMINE IF REP PLANT LICENSED MATERIAL IS MISSING.</p>	NA	NA	NA	NA	NA

5.55-46

### RESPONSIBILITY MATRIX

P6-2

6 REP PLANT MGMT	7 REP PLANT ADMIN	8 REP PLANT MAA	9 REP PLANT BLDG 7	10 LOCAL-COUNTY-STATE LAW ENFORCEMENT
<p>DETERMINE IF REP PLANT LICENSED MATERIAL IS MISSING.</p> <ul style="list-style-type: none"> <li>- Direct conduct of item count inventory. (A)</li> <li>- Report results of inventory action to NRC. (A)</li> </ul>	<p style="text-align: center;"><del>General Task</del></p> <p style="text-align: center;">Accomplish item count inventory of SNM in accord with REP Plant inventory procedure. (A)</p> <hr style="border-top: 1px dashed black;"/>			<p>NA</p>

5.55-47

P7-1

### RESPONSIBILITY MATRIX

EVENT	1 CAS	2 SAS	3 RESPN TEAM	4 OFF-DY GUARDS	5 SITE MGMT
<p>INDICATION OF IMMINENT OR ACTUAL PENETRATION RECEIVED AT CENTRAL ALARM STATION - e.g.:</p> <ul style="list-style-type: none"> <li>- Intrusion Alarm(s) annunciate.</li> <li>- CAS guard observes.</li> <li>- CAS guard hears extraneous noise(s) in exclusion area.</li> <li>- Combination of above</li> </ul> <p><u>Objective:</u> DETERMINE PERCEIVED MAGNITUDE OF DANGER.</p>	<p>DETERMINE PERCEIVED MAGNITUDE OF DANGER</p> <p style="text-align: center;">← General Task →</p> <ul style="list-style-type: none"> <li>- Check false alarm possibility with CCTV if fence alarm is involved; report false alarms to SAS (A)</li> <li>- If an obvious false alarm situation does not exist, actuate silent alarm to SAS to summon assistance of response team. (A)</li> <li>- Lock Building 10. (C)</li> <li>- Direct RESPN Team to REP Plant security sector of concern; monitor situation; receive reports. (A)</li> </ul> <p>Continued</p>	<p>Alpha Site Security Force Operational elements enter and monitor Site Radio Comm Net from receipt of alert until return to normal duty state (A)</p> <ul style="list-style-type: none"> <li>- If silent alarm annunciates or no false alarm is reported from CAS, dispatch response team to investigate and report situation. (A)</li> </ul> <p style="text-align: center;">CAS (cont'd)</p> <ul style="list-style-type: none"> <li>- Assess situation and decide magnitude of danger. (A)</li> <li>- If danger is perceived, go to Event P17. (A)</li> </ul>	<p>Operational elements enter and monitor Site Radio until return to normal duty state (A)</p> <ul style="list-style-type: none"> <li>- Move to scene as directed; observe/ investigate situation. (A)</li> <li>- Report on-scene situation over site radio communication net. (A)</li> </ul>	<p>NA</p>	<p>NA</p>

5.55-48

### RESPONSIBILITY MATRIX

P7-2

6 REP PLANT MGMT	7 REP PLANT ADMIN	8 REP PLANT MAA	9 REP PLANT BLDG 7	10 LOCAL-COUNTY-STATE LAW ENFORCEMENT
NA	NA	NA	NA	NA

5.55-49



**RESPONSIBILITY MATRIX**

P8-1

EVENT	1 CAS	2 SAS	3 RESPN TEAM	4 OFF-DY GUARDS	5 SITE MGMT
<p>INDICATION OF IMMINENT OR ACTUAL PENETRATION PERCEIVED ON SITE BEFORE CENTRAL ALARM STATION - e.g.:</p> <ul style="list-style-type: none"> <li>- Armed persons reported on site.</li> <li>- Recognized criminals reported on site.</li> </ul> <p><u>Objective:</u></p> <p>DETERMINE PERCEIVED MAGNITUDE OF DANGER.</p>	<p>←-----</p> <p>-----</p> <ul style="list-style-type: none"> <li>- As applicable, alert SAS. (C)</li> <li>- Lock Building 10. (A)</li> </ul>	<p>DETERMINE PERCEIVED MAGNITUDE OF DANGER</p> <p align="center">General Task</p> <p>Alpha Site Security Force Operational Elements enter and monitor Site Radio Comm Net from receipt of alert until return to normal duty state. (A)</p> <hr/> <ul style="list-style-type: none"> <li>- As applicable, alert CAS. (C)</li> <li>- Dispatch response team to investigate and report situation. (A)</li> <li>- Monitor/assess situation; decide magnitude of danger. (A)</li> <li>- If danger is perceived, go to Event P17. (A)</li> </ul>	<p>Operational Elements enter and monitor Site Radio Comm Net from receipt of alert until return to normal duty state. (A)</p> <hr/> <ul style="list-style-type: none"> <li>- Move to scene as directed; observe/investigate situation. (A)</li> <li>- Report on-scene situation over site radio communication net. (A)</li> </ul>	<p align="center">NA</p>	<p align="center">NA</p>

5.55-50

**RESPONSIBILITY MATRIX**

P8-2

6 REP PLANT MGMT	7 REP PLANT ADMIN	8 REP PLANT MAA	9 REP PLANT BLDG 7	10 LOCAL-COUNTY-STATE LAW ENFORCEMENT
NA	NA	NA	NA	NA

5.55-51

### RESPONSIBILITY MATRIX

EVENT	1 CAS	2 SAS	3 RESPN TEAM	4 OFF-DY GUARDS	5 SITE MGMT
<p>CIVIL DISTURBANCE ESCALATES IN INTENSITY OR PROXIMITY AND PERCEIVED AS POSSIBLE IMMINENT PENETRATION OF PLANT - e.g.:</p> <ul style="list-style-type: none"> <li>- Labor strike violence or vandalism.</li> <li>- Mob violence or vandalism.</li> <li>- Developed via P3.</li> </ul> <p><u>Objective:</u></p> <p>DETERMINE PERCEIVED MAGNITUDE OF DANGER.</p>	<p style="text-align: center;">←----- General Task -----→</p> <p>Alpha Site Security Force Operational Elements enter and monitor Site Radio Comm Net from receipt of alert until return to normal duty state. (A)</p> <hr style="border-top: 1px dashed black;"/> <p>- As applicable, alert SAS. (C)</p> <p>- Lock Building 10. (A)</p>	<p>DETERMINE PERCEIVED MAGNITUDE OF DANGER.</p> <p style="text-align: center;">←----- General Task -----→</p> <p>- As applicable, alert CAS. (C)</p> <p>- Dispatch RESPN Team to investigate and report situation. (A)</p> <p>- Monitor/assess situation; decide magnitude of danger. (A)</p> <p>- If danger is perceived, go to Event P17.</p>	<p>Operational Elements enter and monitor Site Radio Comm Net from receipt of alert until return to normal duty state. (A)</p> <hr style="border-top: 1px dashed black;"/> <p>- Move to scene as directed; observe/investigate situation. (A)</p> <p>- Report on-scene situation over site radio communication net. (A)</p>		

5.55-52

**RESPONSIBILITY MATRIX**

P9-2

<p align="center">6 REP PLANT MGMT</p>	<p align="center">7 REP PLANT ADMIN</p>	<p align="center">8 REP PLANT MAA</p>	<p align="center">9 REP PLANT BLDG 7</p>	<p align="center">10 LOCAL-COUNTY-STATE LAW ENFORCEMENT</p>
<p>- As applicable, direct Security Officer to monitor and assess offsite civil disturbance to determine magnitude of danger to plant. (C)</p>	<p align="center">NA</p>	<p align="center">NA</p>	<p align="center">NA</p>	<p align="center">NA</p>

5.55-53

**RESPONSIBILITY MATRIX**

EVENT	1 CAS	2 SAS	3 RESPN TEAM	4 OFF-DY GUARDS	5 SITE MGMT
<p>EMERGENCY EVACUATION OF PLANT OCCURS, e.g.:</p> <ul style="list-style-type: none"> <li>- Fire Alarm</li> <li>- Criticality Alarm</li> </ul> <p><u>Objective:</u></p> <p>DETERMINE PERCEIVED POSSIBILITY OF THEFT OR SABOTAGE.</p>	<p style="text-align: center;">←-----</p> <p style="text-align: center;">Alpha Site Security Force Operational Elements enter and monitor Site Radio Comm Net from receipt of alert until return to normal duty state. (A)</p> <hr style="border-top: 1px dashed black;"/> <ul style="list-style-type: none"> <li>- Actuate silent alarm to summon assistance of RESPN Team. (A)</li> <li>- Lock Building 10; allow no one to pass through to parking lot unless authorized by REP Plant MGMT. (A)</li> <li>- Monitor exclusion area with CCTV. (A)</li> <li>- Report to REP Plant MGMT and Security Officer (SAS) any incidents of attempted hiding of items or passage of items outside of perimeter fence. (A)</li> <li>- Direct RESPN Team to areas of suspicious activity. (A)</li> </ul>	<p style="text-align: center;">-----→</p> <p style="text-align: center;"><u>General Task</u></p> <ul style="list-style-type: none"> <li>- Deploy RESPN Team to observe exclusion area and report suspicious events and security breaches. (A)</li> <li>- Assemble and post normally Off-Duty Guards to provide additional security, as warranted by the situation. (C)</li> </ul>	<p style="text-align: center;">-----→</p> <ul style="list-style-type: none"> <li>- Move to REP Plant area, observe exclusion area, and monitor emergency exits until secured. (A)</li> <li>- Investigate observed or reported suspicious events. (A)</li> <li>- Take action to apprehend any person who endeavors to hide items, or to pass items to the outside of perimeter fence. (A)</li> <li>- Monitor/report situation to CAS and Security Officer (SAS). (A)</li> </ul> <p style="text-align: right;">Continued →</p>	<ul style="list-style-type: none"> <li>- Be prepared to assemble as directed by Security Officer (SAS). (A)</li> </ul> <hr style="border-top: 1px dashed black;"/> <p style="text-align: center;">RESPN TEAM (cont'd)</p> <ul style="list-style-type: none"> <li>- Survey the area and recover and secure questionable items until appropriately relieved of them by REP Plant MGMT. (A)</li> </ul>	<ul style="list-style-type: none"> <li>- Be prepared to provide emergency supporting services when requested by REP Plant MGMT and to execute site emergency plans when required. (A)</li> </ul>

5.55-54

### RESPONSIBILITY MATRIX

P10-2

6 REP PLANT MGMT	7 REP PLANT ADMIN	8 REP PLANT MAA	9 REP PLANT BLDG 7	10 LOCAL-COUNTY-STATE LAW ENFORCEMENT
<p>DETERMINE PERCEIVED POSSIBILITY OF THEFT OR SABOTAGE.</p> <ul style="list-style-type: none"> <li>- Monitor and assess ongoing situation; decide if circumstances of emergency alarm could be cover for an attempt at theft or sabotage. (A)</li> <li>- If possible theft of SNM or sabotage is perceived, go to Event P16. (A)</li> </ul>	<p>← <u>General Tasks</u> →</p> <p>(1) Report to REP Plant MGMT suspicious events and security breaches, particularly regarding attempts to hide items or to pass items to the outside of the perimeter fence. (A)</p> <hr style="border-top: 1px dashed black;"/> <p>(2) Assist assessment of situation with regard to security implications, in coordination with REP Plant MGMT. (A)</p>			<p>NA</p>

5.55-55

**RESPONSIBILITY MATRIX**

P11-1

EVENT	1 CAS	2 SAS	3 RESPN TEAM	4 OFF-DY GUARDS	5 SITE MGMT
<p>MATERIAL CONTROL AND ACCOUNTING RECORDS DAMAGED/DESTROYED/ALTERED/MISSING.</p> <p><u>Objective:</u></p> <p>DETERMINE PERCEIVED POSSIBILITY OF THEFT.</p>	NA	NA	NA	NA	NA

5.55-56

## RESPONSIBILITY MATRIX

P11-2

6 REP PLANT MGMT	7 REP PLANT ADMIN	8 REP PLANT MAA	9 REP PLANT BLDG 7	10 LOCAL-COUNTY-STATE LAW ENFORCEMENT
<p>DETERMINE PERCEIVED POSSIBILITY OF THEFT.</p> <ul style="list-style-type: none"> <li>- Report MCA record situation to NRC.(A)</li> <li>- Assemble and assess information on the circumstances surrounding the damage or destruction of the MCA records. (A)</li> <li>- Reconstruct damaged or destroyed MCA records through use of company's MCA records and REP Plant records. (A)</li> <li>- Direct inventory action as necessary to confirm reconstructed REP Plant records. (A)</li> <li>- Resolve differences between inventory data and record data; decide if damage or destruction situation might be cover for attempted theft.(A)</li> <li>- Report results of assessment to NRC.(A)</li> <li>- If possible theft of SNM is perceived, go to Event P21. (A)</li> </ul>	<p style="text-align: center;">←</p> <p style="text-align: center;">Assist conduct of SNM audit and inventory actions in accord with REP Plant procedures. (A)</p>	<p style="text-align: center;">General Task</p> <p style="text-align: center;">→</p>		<p style="text-align: center;">NA</p>

5.55-57



## RESPONSIBILITY MATRIX

P12-1

EVENT	1 CAS	2 SAS	3 RESPN TEAM	4 OFF-DY GUARDS	5 SITE MGMT
<p>INTRUSION ALARM LOCATED AT A MAA OR VA ANNUNCIATES INDICATING POSSIBILITY OF SNM THEFT OR SABOTAGE IN PROGRESS - e.g.:</p> <ul style="list-style-type: none"> <li>- MAA or VA emergency exit is opened without prior notification that such opening is properly authorized.</li> </ul> <p><u>Objective:</u></p> <p>DETERMINE PERCEIVED POSSIBILITY OF THEFT OR SABOTAGE.</p>	<p style="text-align: center;">←----- General Task -----&gt;</p> <p>Alpha Site Security Force Operational Elements enter and monitor Site Radio Comm receipt of alert until return to normal state. (A)</p> <hr style="border-top: 1px dashed black;"/> <ul style="list-style-type: none"> <li>- Actuate silent alarm to summon assistance of RESPN Team. (A)</li> <li>- Lock Building 10; allow no one to pass through to parking lot unless cleared by REP Plant MGMT. (A)</li> <li>- Monitor exclusion area with CCTV. (A)</li> <li>- Direct RESPN Team to area of suspicious activity. (A)</li> <li>- Report situation to REP Plant Management and Security Officer (SAS). (A)</li> </ul>	<ul style="list-style-type: none"> <li>- Dispatch RESPN Team to investigate and report situation (A)</li> </ul>	<ul style="list-style-type: none"> <li>- Move to scene as directed; observe/investigate circumstances of alarm situation in coordination with REP Plant. (A)</li> <li>- Report on-scene situation to CAS and Security Officer (SAS). (A)</li> <li>- Lock doors and reset alarm system in coordination with REP Plant. (A)</li> </ul>	<p style="text-align: center;">NA</p>	<p style="text-align: center;">NA</p>

5.55-58

**RESPONSIBILITY MATRIX**

P12-2

6 REP PLANT MGMT	7 REP PLANT ADMIN	8 REP PLANT MAA	9 REP PLANT BLDG 7	10 LOCAL-COUNTY-STATE LAW ENFORCEMENT
<p>DETERMINE PERCEIVED POSSIBILITY OF THEFT OR SABOTAGE.</p> <ul style="list-style-type: none"> <li>- Investigate circumstances of alarm situation in coordination with RESPN Team. (A)</li> <li>- Assess situation; decide if circumstances of event indicate possible attempted theft or sabotage. (A)</li> <li>- If possible theft of SNM or sabotage is perceived, go to Event P16. (A)</li> </ul>	<p align="center">← <u>General Task</u> →</p> <p align="center">Assist REP Plant MGMT and RESPN Team investigate alarm situation, as applicable. (A)</p> <hr style="border-top: 1px dashed black;"/>			<p align="center">NA</p>

5.55-59

P13-1

### RESPONSIBILITY MATRIX

EVENT	1 CAS	2 SAS	3 RESPN TEAM	4 OFF-DY GUARDS	5 SITE MGMT
<p>SNM DETECTOR OR METAL DETECTOR AT ENTRANCE TO MAA ANNUNCIATES, INDICATING INTERNAL THEFT MAY BE IN PROGRESS.</p> <p><u>Objective:</u> DETERMINE PERCEIVED POSSIBILITY OF THEFT.</p>	<p>← General Task →</p> <p>Alpha Site Security Force Operational Elements enter and monitor Site Radio Comm Net from receipt of alert until return to normal duty state. (A)</p> <hr/> <ul style="list-style-type: none"> <li>- Check false alarm situation via intercom to REP Plant ADMIN. (A)</li> <li>- If no false alarm, actuate silent alarm to summon assistance of RESPN Team. (A)</li> <li>- Lock Building 10; allow no one to pass through to parking lot unless cleared by REP Plant MGMT. (A)</li> <li>- Monitor exclusion area with CCTV. (A)</li> <li>- Direct RESPN Team to area of suspicious activity. (A)</li> <li>- Report situation to REP Plant MGMT and Security Officer (SAS). (A)</li> </ul>	<p>General Task</p> <hr/> <ul style="list-style-type: none"> <li>- Dispatch RESPN Team to investigate and report situation. (A)</li> </ul>	<p>General Task</p> <hr/> <ul style="list-style-type: none"> <li>- Move to scene as directed; observe/investigate circumstances of alarm situation in coordination with REP Plant. (A)</li> <li>- Report on-scene situation to CAS and Security Officer (SAS). (A)</li> </ul>	<p>NA</p>	<p>NA</p>

5.55-60

## RESPONSIBILITY MATRIX

P13-2

6 REP PLANT MGMT	7 REP PLANT ADMIN	8 REP PLANT MAA	9 REP PLANT BLDG 7	10 LOCAL-COUNTY-STATE LAW ENFORCEMENT
<p>DETERMINE PERCEIVED POSSIBILITY OF THEFT.</p> <ul style="list-style-type: none"> <li>- Investigate circumstances of alarm situation in coordination with RESPN Team. (A)</li> <li>- Assess situation; decide if circumstances of event indicate attempted theft. (A)</li> <li>- If possible theft of SNM or sabotage is perceived go to Event P16. (A)</li> </ul>	<p>← <u>General Task</u> →</p> <p>Assist REP Plant MGMT and RESPN Team investigate alarm situation, as applicable. (A)</p> <hr style="border-top: 1px dashed black;"/>			NA

5.55-61

### RESPONSIBILITY MATRIX

P14-1

EVENT	1 CAS	2 SAS	3 RESPN TEAM	4 OFF-DY GUARDS	5 SITE MGMT
<p>EVENT OCCURS THAT TEMPORARILY DEGRADES CERTAIN SAFEGUARDS AND SUGGESTS OPPORTUNITY FOR ATTEMPTED THEFT OR SABOTAGE, e.g.:</p> <ul style="list-style-type: none"> <li>- Guard incapacitated</li> <li>- Communication disrupted</li> <li>- Alarm system deactivated</li> <li>- Power failure</li> <li>- LLEA route to site blocked</li> </ul> <p><u>Objective:</u></p> <p>DETERMINE PERCEIVED POSSIBILITY OF THEFT OR SABOTAGE.</p>	<p style="text-align: center;">←----- General Task -----&gt;</p> <p>Alpha Site Security Force Operational Elements enter and monitor Site Radio Comm Net from receipt of alert until return to normal duty state. (A)</p> <hr style="border-top: 1px dashed black;"/> <p>- As applicable, report event to REP Plant MGMT. (C)</p> <p>- Request RESPN Team assistance if additional security measures are warranted by the situation. (C)</p>	<p>- As applicable, report event to REP Plant MGMT. (C)</p> <p>- Dispatch RESPN Team to provide additional security as applicable. (C)</p>	<p>- Provide additional security as directed by CAS and Security Officer (SAS). (C)</p>	<p>NA</p>	<p>NA</p>

5.55-62

## RESPONSIBILITY MATRIX

P14-2

6 REP PLANT MGMT	7 REP PLANT ADMIN	8 REP PLANT MAA	9 REP PLANT BLDG 7	10 LOCAL-COUNTY-STATE LAW ENFORCEMENT
<p>DETERMINE PERCEIVED POSSIBILITY OF THEFT OR SABOTAGE.</p> <ul style="list-style-type: none"> <li>- In coordination with Security Officer, direct security measures as warranted by the situation. (A)</li> <li>- Initiate coordination with local police as warranted by situation. (C)</li> <li>- Assemble and assess information on circumstances of the event; decide if event indicates possible attempt at theft or sabotage. (A)</li> <li>- If possible theft of SNM or sabotage is perceived, go to Event P16. (A)</li> </ul>	<p>← <u>General Task</u> →</p> <p>Assist assessment of situation and restoration of interrupted services and security, as appropriate. (C)</p> <hr style="border-top: 1px dashed black;"/>			<p>Coordinate with Alpha Site to modify plans for assistance, as appropriate. (C)</p>

5.55-63

### RESPONSIBILITY MATRIX

P15-1

EVENT	1 CAS	2 SAS	3 RESPN TEAM	4 OFF-DY GUARDS	5 SITE MGMT
<p>PERSONNEL DISTURBANCE OCCURS AT REP PLANT WHICH MIGHT BE COVER TO ATTEMPT THEFT OR SABOTAGE, e.g.:</p> <ul style="list-style-type: none"> <li>- Instigated fight.</li> <li>- Highly vocal and irrational behavior.</li> </ul> <p><u>Objective:</u></p> <p>DETERMINE PERCEIVED POSSIBILITY OF THEFT OR SABOTAGE.</p>	<ul style="list-style-type: none"> <li>- Request Security Officer to send guard assistance as directed by REP Plant MGMT. (C)</li> <li>- Request local police assistance as directed by REP Plant MGMT. (C)</li> </ul>	<ul style="list-style-type: none"> <li>- Dispatch guard patrol as requested by REP Plant MGMT. (C)</li> <li>- Request local police assistance as directed by REP Plant MGMT. (C)</li> </ul>	<p>NA</p>	<p>NA</p>	<p>NA</p>

5.55-64

## RESPONSIBILITY MATRIX

P15-2

6 REP PLANT MGMT	7 REP PLANT ADMIN	8 REP PLANT MAA	9 REP PLANT BLDG 7	10 LOCAL-COUNTY-STATE LAW ENFORCEMENT
<p>DETERMINE PERCEIVED POSSIBILITY OF THEFT OR SABOTAGE.</p> <ul style="list-style-type: none"> <li>- Assess and deal with disturbance as applicable; send for guard assistance as required. (A)</li> <li>- Direct CAS or SAS as appropriate; call local police if warranted by situation. (C)</li> <li>- Assemble and assess information on circumstances of disturbance; decide if disturbance is cover for attempt to steal or sabotage. (A)</li> <li>- If possible theft of SNM or sabotage is perceived, go to Event P16. (A)</li> </ul>	<p>← General Task →</p> <p>Assist assessment of situation and quieting of disturbance, as appropriate. (C)</p> <hr style="border-top: 1px dashed black;"/>			<ul style="list-style-type: none"> <li>- Be prepared to respond to Alpha Site's request for assistance. (A)</li> </ul>

5.55-65



## RESPONSIBILITY MATRIX

P16-1

EVENT	1 CAS	2 SAS	3 RESPN TEAM	4 OFF-DY GUARDS	5 SITE MGMT
<p>PERCEIVED POSSIBILITY OF INTERNAL THEFT OR SABOTAGE, e.g.:</p> <ul style="list-style-type: none"> <li>- Developed via P10, P12, P13, P14, and P15 based on REP Plant MGMT decision.</li> </ul> <p><u>Objective:</u></p> <p>PREVENT THEFT OF SNM OR SABOTAGE OF VITAL EQUIPMENT.</p>	<ul style="list-style-type: none"> <li>- As applicable, actuate silent alarm to summon assistance of RESPN Team. (A)</li> <li>- As applicable, lock Building 10 and alert REP Plant MGMT. (A)</li> <li>- Monitor and report situation to REP Plant MGMT and SAS. (A)</li> <li>- Prevent unauthorized passage of SNM from REP Plant via Building 10. (A)</li> <li>- Call local police as warranted by situation when directed by REP Plant MGMT. (C)</li> </ul>	<ul style="list-style-type: none"> <li>- Alert CAS and REP Plant, as appropriate. (A)</li> <li>- Call local police as warranted by situation. (C)</li> <li>- Brief and deploy On-Duty Guard force as appropriate. (C)</li> <li>- Monitor and report situation to REP Plant MGMT and CAS. (A)</li> </ul>	<ul style="list-style-type: none"> <li>- Provide security to REP Plant as directed by Security Officer SAS and CAS. (A)</li> <li>- Prevent unauthorized passage of SNM from REP Plant. (A)</li> <li>- Monitor and report situation to Security Officer (SAS), REP Plant, and CAS. (A)</li> <li>- Apprehend individuals attempting sabotage of REP Plant or unauthorized removal of SNM from REP Plant. (A)</li> </ul>	<p style="text-align: center;">NA</p>	<ul style="list-style-type: none"> <li>- Be prepared to provide emergency supporting services when requested by REP Plant MGMT and to execute site emergency plans when required. (A)</li> </ul>

5.55-66

P16-2

### RESPONSIBILITY MATRIX

EVENT	1 CAS	2 SAS	3 RESPN TEAM	4 OFF-DY GUARDS	5 SITE MGMT
<p>PREVENT THEFT OF SNM OR SABOTAGE OF VITAL EQUIPMENT.</p> <ul style="list-style-type: none"> <li>- Alert Alpha Site Security Officer. (A)</li> <li>- Direct immediate action to restore safeguards and to secure REP Plant exclusion area and MAA. (A)</li> <li>- Direct search of REP Plant exclusion area and areas immediately contiguous to exclusion area for diverted SNM or for sabotage evidence. (A)</li> <li>- Assess circumstances of situation to help law enforcement authorities identify and apprehend adversaries. (A)</li> </ul> <p>Continued →</p>	<p style="text-align: center;">← General Tasks →</p> <ul style="list-style-type: none"> <li>(1) Assist assessment of situation and restoration of safeguards as directed by REP Plant MGMT. (A)</li> <li>(2) Assist search of REP Plant area for diverted SNM and for evidence of sabotage as directed by REP Plant MGMT. (A)</li> <li>(3) Assist accomplishment of inventory actions as directed by REP Plant MGMT. (A)</li> </ul> <p>-----</p> <p>REP PLANT MGMT (Continued)</p> <ul style="list-style-type: none"> <li>- Direct the accomplishment of inventory actions as necessary to verify inventory presence. (A)</li> <li>- As warranted, report situation and status of SNM and sabotage to NRC. (A)</li> <li>- If sabotage occurred, go to Event P22. (A)</li> </ul>			<ul style="list-style-type: none"> <li>- Be prepared to respond to Alpha Site's request for assistance. (A)</li> </ul>	

5.55-67

### RESPONSIBILITY MATRIX

P17-1

EVENT	1 CAS	2 SAS	3 RESPN TEAM	4 OFF-DY GUARDS	5 SITE MGMT
<p>PLANT PENETRATION IN PROGRESS OR PERCEIVED AS IMMINENT.</p> <p>-Developed via P7, P8, P9.</p> <p><u>Objective:</u></p> <p>PREVENT THEFT OF SNM OR SABOTAGE OF VITAL EQUIPMENT.</p>	<ul style="list-style-type: none"> <li>- As applicable, warn SAS and REP Plant MGMT. (A)</li> <li>- Protect the CAS. (A)</li> <li>- Enter local police net; report situation; request police assistance. (A)</li> <li>- Request police execute offsite road block plans if warranted by situation. (C)</li> <li>- Report police situation to REP Plant MGMT and SAS. (A)</li> <li>- As possible, observe and report adversary strength, description, location, and activity over site radio communication net and local police net. (A)</li> </ul>	<ul style="list-style-type: none"> <li>- As applicable, warn CAS and REP Plant MGMT. (A)</li> <li>- Accomplish CAS's notification of police if warranted by situation. (A)</li> <li>- As adversary situation permits, commit RESPN Team to apprehend adversary or delay adversary until police arrival. (A)</li> <li>- Alert Site MGMT about the situation. (A)</li> <li>- If warranted by situation, assemble and brief Off-Duty Guards. (C)</li> </ul>	<ul style="list-style-type: none"> <li>- Observe and report adversary strength, description, location, activity over site radio communication net. (A)</li> <li>- As directed by Alpha Site Security Officer, apprehend adversary or delay until police arrival. (A)</li> </ul>	<ul style="list-style-type: none"> <li>- When alerted by Alpha Site Security Officer (SAS), assemble at site as directed. (A)</li> <li>- Be prepared to accomplish guard security functions assigned by Security Officer. (A)</li> </ul>	<ul style="list-style-type: none"> <li>- Establish and maintain liaison with REP Plant MGMT to keep appraised of the situation. (A)</li> <li>- Provide emergency supporting services and execute site emergency plans as warranted by the situation. (A)</li> </ul>

5.55-68

## RESPONSIBILITY MATRIX

P17-2

6 REP PLANT MGMT	7 REP PLANT ADMIN	8 REP PLANT MAA	9 REP PLANT BLDG 7	10 LOCAL-COUNTY-STATE LAW ENFORCEMENT
<p>PREVENT THEFT OF SNM OR SABOTAGE OF VITAL EQUIPMENT.</p> <ul style="list-style-type: none"> <li>- Depending upon situation direct evacuation by REP Plant personnel from REP Plant area, or assembly of personnel into central rooms of ADMIN area. (A)</li> <li>- Monitor/assess ongoing situation; in coordination with Alpha Site Security Officer, direct additional security measures as required by situation. (A)</li> <li>- Report situation to NRC. (A)</li> <li>- If plant is penetrated and held hostage, go to Event P18. (A)</li> <li>- If plant is penetrated and the adversary escapes, go to Event P19. (A)</li> </ul>	<p style="text-align: center;">←-----</p> <ul style="list-style-type: none"> <li>(1) On alert, immediately lock alarmed doors that might happen to be open. (A)</li> <li>(2) Execute evacuation or assembly as directed by REP Plant MGMT. (A)</li> </ul> <p style="text-align: center;">-----→</p>	<p>General Tasks</p>		<ul style="list-style-type: none"> <li>- Request additional police assistance as warranted by situation. (A)</li> <li>- Assemble police force without delay at Alpha Site. (A)</li> <li>- Obtain situation information from Alpha Site CAS, and Security Officer. (A)</li> <li>- Establish offsite road blocks of principal routes from Alpha Site as warranted by situation. (C)</li> <li>- Execute police plans to apprehend adversaries. (A)</li> </ul>

5.55-69

### RESPONSIBILITY MATRIX

P18-1

EVENT	1 CAS	2 SAS	3 RESPN TEAM	4 OFF-DY GUARDS	5 SITE MGMT
<p>PLANT PENETRATED AND HELD HOSTAGE.</p> <p>-Developed via P17</p> <p><u>Objective:</u></p> <p>PREVENT THEFT OF SNM OR SABOTAGE OF VITAL EQUIPMENT.</p>	<ul style="list-style-type: none"> <li>- Continue to protect CAS and keep Building 10 locked. (A)</li> <li>- Monitor intercom to REP Plant ADMIN area and alarm system; report information to Alpha Site Security Officer (SAS). (A)</li> <li>- Monitor local police net to keep apprised of on-going situation. (A)</li> </ul>	<ul style="list-style-type: none"> <li>- Assemble and brief normally On-Duty Guards as warranted by situation. (C)</li> <li>- In coordination with Alpha Site Security Officer and police, deploy RESPN Team and normally Off-Duty Guards to maintain all around observation of REP Plant area and to isolate REP Plant area from traffic and unauthorized personnel. (A)</li> <li>- Monitor situation; keep REP Plant MGMT, site MGMT, and police informed as appropriate. (A)</li> <li>- Keep deployed guard force and CAS informed of police activities and plans as necessary for guard response and safety. (A)</li> </ul>	<p>← General Tasks →</p> <ul style="list-style-type: none"> <li>(1) Accomplish and maintain deployments as directed by Security Officer and SAS. (A)</li> <li>(2) Observe and report REP Plant situation to Security Officer and SAS. (A)</li> </ul> <p>-----</p>	<ul style="list-style-type: none"> <li>- Provide emergency supporting services and execute site emergency plans as warranted by the situation. (A)</li> <li>- Be prepared to accomplish REP Plant MGMT actions in the event REP Plant MGMT is unavailable due to hostage situation. (A)</li> </ul>	

5.55-70

## RESPONSIBILITY MATRIX

P18-2

6 REP PLANT MGMT	7 REP PLANT ADMIN	8 REP PLANT MAA	9 REP PLANT BLDG 7	10 LOCAL-COUNTY-STATE LAW ENFORCEMENT
<p>PREVENT THEFT OF SNM OR SABOTAGE OF VITAL EQUIPMENT.</p> <ul style="list-style-type: none"> <li>- Monitor/report situation to NRC and to Alpha Site Security Officer and police authorities as appropriate. (A)</li> <li>- Establish communications with adversary and conduct negotiations until police arrival. (A)</li> <li>- Arrange for personnel evacuation of REP Plant as applicable. (A)</li> <li>- As required by police situation, request NRC arrange Federal assistance from FBI to negotiate plant's release and adversary surrender. (A)</li> <li>- Assist police and FBI, as applicable, negotiate with adversary. (A)</li> </ul> <p>Continued →</p>	<p style="text-align: center;">← General Tasks →</p> <ul style="list-style-type: none"> <li>(1) Keep alarmed doors locked as applicable. (A)</li> <li>(2) Evacuate REP Plant employees as directed by REP Plant MGMT. (A)</li> <li>(3) Communicate with adversary only as directed by REP Plant MGMT. (A)</li> </ul> <hr style="border-top: 1px dashed black;"/> <p style="text-align: center;">REP PLANT MGMT (Cont'd)</p> <ul style="list-style-type: none"> <li>- If adversary escapes, go to Event P19. (A)</li> <li>- If any sabotage, go to Event P22. (A)</li> </ul>			<ul style="list-style-type: none"> <li>- Execute police plans to negotiate release of plant and hostages and the surrender of the adversary. (A)</li> <li>- Establish and maintain onsite and off-site road blocks and other police deployments as required to ensure capture of adversary after plant is released. (A)</li> </ul>

5.55-71

## RESPONSIBILITY MATRIX

P19-1

EVENT	1 CAS	2 SAS	3 RESPN TEAM	4 OFF-DY GUARDS	5 SITE MGMT
<p>PLANT PROTECTION OVERCOME BY EXTERNAL ATTACK, ADVERSARY PENETRATION AND ESCAPE HAS OCCURRED</p> <p>-Developed via P17 or P18.</p> <p><u>Objective:</u></p> <p>DETERMINE IF SNM HAS BEEN STOLEN AND/OR RADIOACTIVITY DISPERSED.</p>	<ul style="list-style-type: none"> <li>- Report to Alpha Site Security Officer (SAS) observations of adversary escape inclusive of: (A)</li> <li>(1) Transportation description and registration number.</li> <li>(2) Strength and description of adversaries departing.</li> <li>(3) Description of containers, packages, items carried during departure from plant by adversaries.</li> <li>(4) Loadout of adversaries and cargo into transportation.</li> <li>- Accomplish and maintain REP Plant security deployments as directed by Alpha Site Security Officer. (A)</li> </ul>	<ul style="list-style-type: none"> <li>- Monitor and report escape situation to police as appropriate. (A)</li> <li>- Report REP Plant damage to REP Plant MGMT. (A)</li> <li>- In coordination with REP Plant MGMT, deploy guard force to protect exclusion area and to assist radiological survey. (A)</li> <li>- Assist REP Plant MGMT conduct after-action interviews of guard force to determine description of adversary attack and escape. (A)</li> </ul>	<p style="text-align: center;">← General Tasks →</p> <ul style="list-style-type: none"> <li>(1) Report to Alpha Site Security Officer (SAS) observations of adversary escape inclusive of: (A)                             <ul style="list-style-type: none"> <li>(a) Transportation description and registration number.</li> <li>(b) Strength and description of adversaries departing.</li> <li>(c) Description of containers, packages, items carried during departure from plant by adversaries.</li> <li>(d) Loadout of adversaries, and cargo into transportation.</li> </ul> </li> <li>(2) Accomplish and maintain REP Plant security deployments as directed by Alpha Site Security Officer. (A)</li> </ul> <p>-----</p>		<ul style="list-style-type: none"> <li>- Provide emergency supporting services and execute site emergency plans as warranted by the situation. (A)</li> </ul>

5.55-72

### RESPONSIBILITY MATRIX

6 REP PLANT MGMT	7 REP PLANT ADMIN	8 REP PLANT MAA	9 REP PLANT BLDG 7	10 LOCAL-COUNTY-STATE LAW ENFORCEMENT
<p>DETERMINE IF SNM HAS BEEN STOLEN AND/OR RADIOACTIVITY DISPERSED.</p> <ul style="list-style-type: none"> <li>- Monitor/report escape situation to Alpha Site Security Officer and police authorities; request offsite apprehension. (A)</li> <li>- Direct radiological survey of REP Plant damage and execute emergency plans as appropriate. (A)</li> <li>- Coordinate with Security Officer to deploy guard force for protection of uncovered REP Plant exclusion area. (A)</li> <li>- Conduct inventory and accounting of SNM. (A)</li> <li>- Conduct interviews of guards and REP Plant employees to determine if SNM theft observed. (A)</li> </ul> <p>Continued →</p>	<p style="text-align: center;">← <u>General Tasks</u> →</p> <ol style="list-style-type: none"> <li>(1) Observe any REP Plant damage or likely radiological hazards caused by adversary and report to REP Plant MGMT. (A)</li> <li>(2) Execute pertinent radiological emergency plans as directed by Manager REP Plant (A)</li> <li>(3) Secure MAA and VA in accord with REP Plant procedure. (A)</li> <li>(4) Report any SNM theft by adversary to REP Plant MGMT. (A)</li> <li>(5) Assist conduct of SNM inventory in accord with REP Plant procedure. (A)</li> </ol> <hr style="border-top: 1px dashed black;"/> <p>REP PLANT MGMT (Cont'd)</p> <ul style="list-style-type: none"> <li>- Assemble and assess information to estimate quantity/type SNM stolen and radioactivity dispersed. (A)</li> <li>- Report situation and status of SNM and dispersal to NRC. (A)</li> </ul> <p>Continued →</p>	<p>REP PLANT MGMT (Cont'd)</p> <ul style="list-style-type: none"> <li>- If sabotage occurred, go to Event P22. (A)</li> </ul>		<ul style="list-style-type: none"> <li>- Pursue and apprehend adversaries in coordination with State and county police authorities. (A)</li> <li>- Assist FBI investigation to recover any stolen SNM. (A)</li> </ul>

5.55-73



## RESPONSIBILITY MATRIX

P20-1

EVENT	1 CAS	2 SAS	3 RESPN TEAM	4 OFF-DY GUARDS	5 SITE MGMT
<p>PHYSICAL EVIDENCE INDICATES POSSIBILITIES OF UNDETECTED INTRUSION AND THEFT OF SNM, e.g.,</p> <ul style="list-style-type: none"> <li>- Hole in fence.</li> <li>- Vault door found unlocked.</li> <li>- Unexplained debris or artifacts in vault.</li> <li>- Missing item(s).</li> </ul> <p><u>Objective:</u></p> <p>DETERMINE IF SNM HAS BEEN STOLEN.</p>	<ul style="list-style-type: none"> <li>- Report circumstances of situation to REP Plant MGMT and Security Officer (SAS) as applicable. (C)</li> <li>- Request SAS provide additional guard assistance as needed to restore REP Plant security. (A)</li> </ul>	<ul style="list-style-type: none"> <li>- Provide additional guards to secure REP Plant as warranted by situation. (A)</li> </ul>	<ul style="list-style-type: none"> <li>- Provide additional security to REP Plant as directed by CAS and Security Officer (SAS). (A)</li> </ul>	NA	NA

5.55-74

**RESPONSIBILITY MATRIX**

P20-2

6 REP PLANT MGMT	7 REP PLANT ADMIN	8 REP PLANT MAA	9 REP PLANT BLDG 7	10 LOCAL-COUNTY-STATE LAW ENFORCEMENT
<p>DETERMINE IF SNM HAS BEEN STOLEN.</p> <ul style="list-style-type: none"> <li>- Direct immediate action to restore compromised safeguards and to secure REP Plant exclusion area and MAA. (A)</li> <li>- Direct conduct of SNM inventory to ascertain quantity and type losses, if any. (A)</li> <li>- Assess circumstances and contributing factors of incident, and take necessary corrective actions. (A)</li> <li>- Report incident and SNM status to NRC, as appropriate. (C)</li> </ul>	<p align="center">← General Tasks →</p> <ul style="list-style-type: none"> <li>(1) Secure REP Plant area and SNM, as appropriate. (A)</li> <li>(2) Assist in conducting SNM inventory in accordance with REP Plant procedure. (A)</li> <li>(3) Assess circumstances and contributing factors of incident as appropriate; recommend or accomplish necessary corrective actions. (A)</li> </ul> <hr style="border-top: 1px dashed black;"/>			<p align="center">NA</p>

5.55-75

### RESPONSIBILITY MATRIX

P21-1

EVENT	1 CAS	2 SAS	3 RESPN TEAM	4 OFF-DY GUARDS	5 SITE MGMT
<p>MATERIAL CONTROL AND ACCOUNTING SYSTEM INDICATES POSSIBLE THEFT OF SNM, e.g.,</p> <ul style="list-style-type: none"> <li>- MCA records differ from company records</li> <li>- Excessive MUF</li> <li>- Missing item(s)</li> <li>- Developed via P11</li> </ul> <p><u>Objective:</u></p> <p>DETERMINE IF SNM HAS BEEN STOLEN.</p>	NA	NA	NA	NA	NA

5.55-76

### RESPONSIBILITY MATRIX

P21-2

6 REP PLANT MGMT	7 REP PLANT ADMIN	8 REP PLANT MAA	9 REP PLANT BLDG 7	10 LOCAL-COUNTY-STATE LAW ENFORCEMENT
<p>DETERMINE IF SNM HAS BEEN STOLEN.</p> <ul style="list-style-type: none"> <li>- Direct audit of REP Plant records and crosscheck with company records. (A)</li> <li>- Direct reinventory action as necessary for locating possible erroneous data from previous inventory actions. (A)</li> <li>- Report estimated quantity and type SNM missing in accord with NRC procedure. (A)</li> </ul>	<p>← <u>General Task</u> →</p> <p>Assist conduct of SNM audit and inventory actions in accord with REP Plant procedures. (A)</p> <hr style="border-top: 1px dashed black;"/>			<p>NA</p>

5.55-77

## RESPONSIBILITY MATRIX

P22-1

EVENT	1 CAS	2 SAS	3 RESPN TEAM	4 OFF-DY GUARDS	5 SITE MGMT
<p>PLANT HAS SUFFERED SABOTAGE RESULTING IN DISPERSAL OF RADIO-ACTIVITY, e.g.,</p> <ul style="list-style-type: none"> <li>- Developed via P18,</li> <li>- Sabotage event occurs without external attack.</li> </ul> <p><u>Objective:</u></p> <p>RESTORE PROTECTION TO REMAINING MATERIAL.</p>	<ul style="list-style-type: none"> <li>- Report to REP Plant MGMT and Security Officer observations of: (A)</li> <li>(1) Extent of damage to REP Plant facilities.</li> <li>(2) Physical security deficiencies in fences, buildings, and alarm systems.</li> <li>- In coordination with REP Plant MGMT and Security Officer, obtain location of radiological hazard areas and keep guard force informed of these areas, as applicable. (A)</li> </ul>	<ul style="list-style-type: none"> <li>- Coordinate with CAS and REP Plant MGMT to obtain location of radiological hazard areas; keep guard force informed. (A)</li> <li>- Dispatch RESPN Team to inspect REP Plant perimeter fences and building damage. (A)</li> <li>- Assess REP Plant damage, physical security deficiencies, and radiological hazard information to determine suitable deployment of guards. (A)</li> <li>- Report REP Plant damage and physical security deficiencies to REP Plant MGMT. (A)</li> <li>- Assemble normally Off-Duty Guards, as required to augment On-Duty Guards. (A)</li> <li>- Deploy guards to secure REP Plant exclusion area. (A)</li> </ul>	<ul style="list-style-type: none"> <li>- Obtain location of radiological hazard areas from SAS or CAS. (A)</li> <li>- Proceed to REP Plant; inspect perimeter fences and buildings for damage, avoiding radiological hazards. (A)</li> <li>- Report REP Plant damage and physical security deficiencies to Security Officer. (A)</li> <li>- Provide security for REP Plant exclusion area as directed by Security Officer (SAS). (A)</li> </ul>	<ul style="list-style-type: none"> <li>- Assemble as directed by Security Officer. (A)</li> <li>- Provide REP Plant security for exclusion area as directed by Security Officer. (SAS). (A)</li> </ul>	<ul style="list-style-type: none"> <li>- Provide emergency supporting services and execute site emergency plans as warranted by situation. (A)</li> </ul>

5.55-78

## RESPONSIBILITY MATRIX

P22-2

6 REP PLANT MGMT	7 REP PLANT ADMIN	8 REP PLANT MAA	9 REP PLANT BLDG 7	10 LOCAL-COUNTY-STATE LAW ENFORCEMENT
<p>RESTORE PROTECTION TO REMAINING MATERIAL.</p> <ul style="list-style-type: none"> <li>- Direct execution of pertinent radiological safety emergency plans. (A)</li> <li>- As applicable, direct guard force and REP Plant to secure the plant and SNM. (A)</li> <li>- Assemble/assess REP Plant damage, physical security deficiencies, radiological hazard information. (A)</li> <li>- Establish priorities for repair of REP Plant damage and physical security deficiencies. (A)</li> <li>- Arrange for emergency site services and other services as required to restore REP Plant physical security. (A)</li> <li>- Report situation to NRC. (A)</li> </ul>	<p>← <u>General Tasks</u> →</p> <ul style="list-style-type: none"> <li>(1) Execute pertinent radiological safety emergency plans. (A)</li> <li>(2) Report building damage and physical security deficiencies to REP Plant MGMT in accord with procedure. (A)</li> <li>(3) Post watchman as required to secure MAA and vital areas. (A)</li> <li>(4) Coordinate with Security Officer to obtain desired guard support in accord with REP Plant procedure.</li> </ul> <hr style="border-top: 1px dashed black;"/>			<p>Be prepared to respond to Alpha Site's request for law enforcement assistance. (A)</p>

5.55-79

Appendix F

PROCEDURES SUMMARY

This approach provides a ready reference to specific task sequences for each operating element of the contingency plan. This summary of procedures, responsibilities, and task sequences are given in the nine enclosures as listed below:

- Enclosure 1. Security Officer's Procedures Summary
- Enclosure 2. CAS's Procedures Summary
- Enclosure 3. SAS's Procedures Summary
- Enclosure 4. RESPN Team's Procedures Summary
- Enclosure 5. Off-Duty Guards; Procedures Summary
- Enclosure 6. Site Management's Procedures Summary
- Enclosure 7. REP Plant MGMT's Procedures Summary
- Enclosure 8. ADMIN, MAA BLDG 7 Personnel's Procedures Summary
- Enclosure 9. LEA's Procedure's Summary

Enclosure 1

Appendix F

SECURITY OFFICER'S PROCEDURES SUMMARY

1. PURPOSE

This document summarizes the general responsibilities and contingency task sequences normally accomplished by the Security Officer. The context and background perspective of these duties are presented in the basic plan.

2. SECURITY OFFICER'S GENERAL RESPONSIBILITIES

- a. Plans, directs, and coordinates the overall task organization, disposition, movements, and response operations of the site security force, i.e., the CAS, SAS, RESPN Team, and Off-Dy Guards.
- b. Coordinates with REP Plant MGMT and Site MGMT as necessary to enhance security operational readiness and to effectively execute security response operations.
- c. Requests LEA assistance and coordinates with LEA providing response assistance as necessary to effectively plan and execute security response operations.

3. STANDARD PROCEDURES

- a. REP Plant MGMT directs the overall response actions of REP Plant personnel in coordination with the Security Officer.
- b. The Security Officer coordinates with the CAS and the SAS to assume control of security force response operations as soon as practical during the initial response period of a contingency situation.
- c. The CAS coordinates initial security force response actions directed at the REP Plant's protected area until control is assumed by the Security Officer.
- d. The SAS coordinates initial security force response actions directed at site locations other than the REP Plant's protected area until control is assumed by the Security Officer.
- e. Coordination of security force operations with police response force operations will be accomplished through the Security Officer to the senior Red Town Police official present. Red Town Police coordinate overall police response operations.



f. The CAS operates continually in the Site Radio Comm Net to serve as the net base station for control of the net.

g. Site security force operational elements enter and operate in the Site Radio Comm Net from receipt of a contingency alert until the Security Officer terminates the alert.

h. As required by the situation, operational elements alert and pass information to each other by the fastest available means, i.e., radio, telephone, intercom, silent alarms, messenger, voice.

i. All operational elements report the situation for purposes of operational coordination by observing and reporting on:

- Adversary strength, description, dispositions, and activities.
- Onsite dispositions and activity opposing the adversary situation.

j. The CAS maintains Building 10 locked and allows no person to pass unless specifically authorized by the REP Plant MGMT or the Security Officer whenever:

- An unresolved CAS alarm situation exists.
- A threatening situation is perceived to exist, e.g., armed persons or known criminals on site; threatening civil disturbances exist; etc.
- An emergency evacuation of plant exists; or a perceived possibility of an internal theft attempt exists.
- An adversary penetration of plant is imminent, in progress, or exists.

#### 4. SECURITY OFFICER'S CONTINGENCY TASK SEQUENCES

##### 4.1 IN THE EVENT THAT THE SECURITY OFFICER:

- Receives or learns of an explicit threat against the plant,
- Infers that a threat exists from a civil disturbance or because of observed anomalies or other suspicious situations at the plant, or
- Is informed that a serious threat exists by REP Plant MGMT or other authority,

##### THE SECURITY OFFICER WILL:

a. Keep the REP Plant MGMT informed of the threat and all available information concerning the threat.

b. Perform onsite investigative effort as indicated by the situation and make offsite queries as requested by REP Plant MGMT to assemble additional information on the threat situation.

c. Dispatch RESPN Team observers to scene of civil disturbances or other suspicious activity allegedly threatening the plant to monitor and report information on the seriousness of the perceived threat.

d. Advise and assist REP Plant MGMT in assessing the seriousness of the threat.

e. If threat is perceived serious by REP Plant MGMT or is reported to be serious by other duly constituted authority, coordinate with REP Plant MGMT and Site MGMT to implement increased security readiness measures appropriate to the perceived threat, e.g.,

- Increase on-duty guard strength, and issue necessary arms and communication equipment.
- Increase number and frequency of security patrols and checks.
- Alert LEA response forces as to the seriousness of the perceived threat.
- Increase frequency of queries to pertinent LEA or other pertinent agencies for threat status and early warning information and for continued threat assessment.
- Place Off-Duty Guards on standby alert.
- Review alert procedures and emphasize operational tactics as applicable to the situation.

#### 4.2 IN THE EVENT THAT THE SECURITY OFFICER:

- Receives a report from the CAS or SAS, or otherwise learns of a serious imminent or on-going attempt by an adversary to penetrate the plant, or
- Learns that an on-going civil disturbance or other suspicious activity is believed to be a serious imminent threat to penetrate the plant,

#### THE SECURITY OFFICER WILL:

a. Monitor, assemble, and assess information on the adversary situation and the site security force situation as necessary to adjust, coordinate, and direct the on-going security force response operations to stop or effectively delay the adversary.

b. Ensure that LEA assistance is requested and that responding LEA are kept informed of the adversary and security force situation, and recommend avenues of approach to the LEA for their initial contact with the adversary.

c. Ensure that Off-Duty Guards are alerted, marshalled, and deployed as appropriate to the situation.

d. Establish a joint coordination point on site with the response LEA to enhance communication and to achieve close coordination of security force activity with the LEA response actions.

e. Ensure that REP Plant MGMT is kept informed of the adversary and response force situations and recommend dispositions and activity for REP Plant personnel appropriate to the situation.

f. If the plant is seized and held hostage,

- Assist REP Plant MGMT, Site MGMT, and LEA (as indicated by the situation) to establish communications with the adversary for negotiations.
- Recommend LEA dispositions and activity (e.g., road blocks, involvement of other LEA, chase helicopter capability) to prevent adversary escape with SNM and to isolate the plant area.
- Dispose the security force to support LEA on site dispositions and activity and to observe and report on the adversary situation.
- Recommend to the LEA and to REP Plant MGMT the FBI assistance that should be requested, e.g.,
  - Federal expertise in adversary negotiations,
  - SWAT team capability,
  - Federal investigative activity regarding adversary ID and background.

g. If adversary penetrates and escapes from the plant,

- Ensure that LEA response is immediately informed of the adversary escape situation, i.e.,
  - Egress route and last seen direction of movement,
  - Transport description and license number,
  - Number of persons involved and description(s),
  - Articles carried and their location in the transport.

- Request LEA to execute road blocks and hot pursuit operations to apprehend the adversary for recovery of any SNM in his possession.
- Coordinate with REP Plant MGMT to assist him (guard interviews, reports, etc.) in determining if SNM has been stolen or if radioactivity has been dispersed.

4.3 IN THE EVENT THAT THE SECURITY OFFICER:

- Learns of a possible internal attempt to steal SNM or to sabotage the plant, e.g.,
  - Internal intrusion alarms, door alarms, or MAA portal alarms annunciate,
  - An emergency evacuation or other type disturbance (fight, irrational behavior, etc.) occurs in the plant, or
  - An unexpected power outage, communication outage, or other safeguards degrading incident occurs,

THE SECURITY OFFICER WILL:

- a. Coordinate with the CAS, SAS, and RESPN Team to determine the circumstances of the incident and the status and activity of the RESPN Team deployment if any.
- b. Coordinate with REP Plant MGMT to assist him in assessing the situation and to determine internal security implications and needs.
- c. Ensure that the RESPN Team and other security elements deployed (including Off-Duty Guards) are adequate to control the situation and to provide required security surveillance of the protected area, as indicated by the situation.
- d. Monitor the situation; report to REP Plant MGMT the circumstances of attempted hiding or removal of items from the protected area or of suspicious attempts to exist from the protected area.
- e. Ensure that LEA assistance, as determined in consultation with REP Plant MGMT, is requested to deal with perceived adversaries or other persons involved in the situation.

4.4 IN THE EVENT THE SECURITY OFFICER:

- Observes or is informed of physical evidence suggesting that a previously undetected intrusion of the plant might have occurred, e.g.,
  - Hole in the perimeter fence, a plant wall, the roof,
  - Damaged plant doors or windows,

- Is aware of plant damage that results in radioactive contamination external to plant,

THE SECURITY OFFICER WILL:

a. Assemble information on the location and nature of plant damage and assess the security requirements stemming from such damage.

b. Coordinate as required to keep REP Plant MGMT informed of the plant damage and security requirements and to determine the location and extent of existing radiological hazards and restrictions.

c. Organize and dispose the security force as necessary to restore or cover degraded plant security protective features and to assist in isolating areas of radiological hazard.

d. Keep security force informed of existing radiological hazards and restrictions.

e. Recommend to REP Plant MGMT temporary repairs and the priority of permanent repairs to restore the effectiveness of damaged plant security protective features.

Enclosure 2

Appendix F

CAS'S PROCEDURES SUMMARY

1. PURPOSE

This document summarizes the general responsibilities and contingency task sequences normally accomplished by the CAS. The context and background perspective of these duties are presented in the basic plan.

2. CAS'S GENERAL RESPONSIBILITIES

CAS will accomplish general responsibilities listed below in coordination with SAS and REP Plant MGMT. SAS will keep the Site Security Officer informed of CAS actions as appropriate to the situation.

- a. Summon and direct RESPN Team immediately upon sensing the possibility of an adversary incursion in order to assess and deal with the situation.
- b. Summon police response force to deal with the adversary immediately upon becoming aware of an actual incursion.
- c. Block unauthorized passage via Building 10 to prevent escape with SNM.
- d. Prevent adversary penetration of Building 10 to protect the surveillance, communications, and alarm systems.
- e. Monitor the alarm system, the intercom, the CCTV, and the radio nets to be continually appraised of the situation and to acquire and report information on the adversary and the adversary situation.
- f. Report to SAS and REP Plant MGMT observed damage or breaches of plant physical security and recommend actions to provide interim security as needed.
- g. Acquire information on radiological hazard areas, as applicable, from the Security Officer and REP Plant MGMT and keep guard force informed as to the location of such areas.

3. STANDARD PROCEDURES

- a. REP Plant MGMT directs the overall response actions of REP Plant personnel in coordination with the Security Officer.

b. The Security Officer coordinates with the CAS and the SAS to assume control of security force response operations as soon as practical during the initial response period of a contingency situation.

c. The CAS coordinates initial security force response actions directed at the REP Plant's protected area until control is assumed by the Security Officer.

d. The SAS coordinates initial security force response actions directed at site locations other than the REP Plant's protected area until control is assumed by the Security Officer.

e. Coordination of security force operations with police response force operations will be accomplished through the Security Officer to the senior Red Town Police official present. Red Town Police coordinate overall police response operations.

f. The CAS operates continually in the Site Radio Comm Net to serve as the net base station for control of the net.

g. Site security force operational elements enter and operate in the Site Radio Comm Net from receipt of a contingency alert until the Security Officer terminates the alert.

h. As required by the situation, operational elements alert and pass information to each other by the fastest available means, i.e., radio, telephone, intercom, silent alarms, messenger, voice.

i. All operational elements report the situation for purposes of operational coordination by observing and reporting on:

- Adversary strength, descriptions, dispositions, and activities.
- Onsite dispositions and activity opposing the adversary situation.

j. The CAS maintains Building 10 locked and allows no person to pass unless specifically authorized by the REP Plant MGMT or the Security Officer whenever:

- An unresolved CAS alarm situation exists,
- A threatening situation is perceived to exist, e.g., armed persons or known criminals on site, threatening civil disturbances, etc.,
- An emergency evacuation of plant exists or a perceived possibility of an internal theft attempt exists,
- An adversary penetration of plant is imminent, in progress, or exists.

#### 4. CAS'S CONTINGENCY TASK SEQUENCES

##### 4.1 IN THE EVENT THAT THE CAS:

- Receives or learns of an explicit threat against the plant,
- Infers that a threat exists from a civil disturbance or because of observed anomalies or other suspicious situations,
- Is informed that a serious threat exists by REP Plant MGMT or other authority,

##### THE CAS WILL:

- a. Report all information about the perceived threat without delay to the Security Officer (SAS).
- b. Perform additional security surveillance at CAS as directed by the Security Officer (SAS).

##### 4.2 IN THE EVENT THAT THE CAS:

- Receives an indication of a possible plant penetration such as:
  - Annunciation of an intrusion alarm,
  - Extraneous noises occurring in the exclusion area,
  - Suspicious acts observed in or near the exclusion area, or
  - Security Officer (SAS) or RESPN Team warning of a dangerous onsite situation,

##### THE CAS WILL:

- a. Check false alarm possibilities with the CCTV.
- b. If false alarm is not obvious, summon assistance of the RESPN Team by actuating the "silent" alarm.
- c. Direct the RESPN Team to the plant security sector of concern; monitor the situation and receive RESPN Team reports over the Site Radio Comm Net.
- d. Assess the situation to determine if danger of plant penetration exists.



- e. If danger does exist, protect the CAS against adversary penetration.
- f. Warn REP Plant MGMT of danger over the intercom system.
- g. Enter Local Police Net; report situation (adversary strength, weapons, mood, and activity); request police response force assistance.
- h. Monitor adversary situation and police response force developments over the site and police nets; keep Security Officer (SAS) and REP Plant MGMT informed.
- i. If plant is penetrated, monitor intercom and the plant alarm systems to acquire and report information on adversary activity within the plant.
- j. If adversary escapes from plant, request the police to establish offsite road blocks and check points and to execute chase plans as warranted by situation.
- k. Report observations of adversary escape to the Security Officer, including:
  - Egress route and last seen direction.
  - Transport description and license number.
  - Number of persons involved and descriptions.
  - Description of articles carried by adversary on departure.
  - Location of adversary and cargo in the transport.

#### 4.3 IN THE EVENT THAT THE CAS:

- Receives an indication of a possible internal attempt to steal SNM or to sabotage the plant, such as:
  - An internal alarm or an emergency door alarm of the MAA or a VA annunciates,
  - The SNM or metal detector at entrance to the MAA annunciates,
  - An emergency evacuation or other type disturbance (fight, irrational behavior, etc.) occurs in the plant, or
  - An unexpected power or communication outage occurs,

#### THE CAS WILL:

- a. Check false alarm possibilities, as applicable, via telephone or intercom to plant.

b. If false alarm is not obvious, summon assistance of the RESPN Team by actuating the "silent" alarm.

c. Prevent unauthorized passage of SNM from the plant via Building 10.

d. Direct RESPN Team to the assistance of REP Plant MGMT or to general surveillance of plant's exterior and protected area, as warranted by the situation.

e. Observe exclusion area with CCTV and alert RESPN Team regarding location and nature of suspicious activity, such as:

- Attempted movement by persons from the protected area to the outside or
- Attempted hiding of items or passage of items to outside of perimeter fence.

f. Monitor and report situation to Security Officer (SAS) and REP Plant MGMT; recommend additional security precautions as appropriate.

g. When authorized by the Security Officer (SAS) or REP Plant MGMT, enter Local Police Net; report nature of situation and request police assistance at plant.

#### 4.4 IN THE EVENT THAT THE CAS:

- Observes or is informed of physical evidence suggesting that a previously undetected intrusion of the plant might have occurred, such as:
  - A hole in the perimeter fence, a plant wall, the roof
  - Damaged plant doors or windows,
- Is aware of plant damage that results in radioactive contamination external to plant,

#### THE CAS WILL:

a. Report location and nature of the damage or physical evidence to the Security Officer (SAS) and REP Plant MGMT and recommend additional security measures as appropriate.

b. Obtain locations of radiological hazard areas from Security Officer (SAS) or REP Plant MGMT and keep security force elements informed of such areas as applicable.

Enclosure 3

Appendix F

SAS'S PROCEDURES SUMMARY

1.0 PURPOSE

This document summarizes the general responsibilities and contingency task sequences normally accomplished by the SAS. The context and background perspective of these duties are presented in the basic plan.

2.0 SAS'S GENERAL RESPONSIBILITIES

The SAS will accomplish general responsibilities listed below in coordination with CAS and REP Plant MGMT. SAS will keep the Site Security Officer informed of CAS and SAS actions as appropriate to the situation.

a. Monitor the on-going situation and be prepared to assume responsibilities of CAS as indicated by the situation.

b. Alert and commit RESPN Team, as indicated by the situation, to reinforce CAS or REP Plant security, to monitor or assess onsite security incidents, or to deal with an adversary incursion until effective police arrival.

c. Summon and brief LEA response force to deal with adversary incursions against REP Plant or potential adversaries that are onsite.

d. Alert, assemble, and commit Off-Duty Guards as indicated by the situation to reinforce CAS or REP Plant security.

e. Prevent adversary penetration of SAS area to protect surveillance, communications, and alarm systems.

f. Maintain liaison with local police and other security forces, as indicated by the situation, to monitor and assess offsite civil disturbances or other suspicious activity and to obtain early warning of possible incursions against REP Plant.

3.0 STANDARD PROCEDURES

a. REP Plant MGMT directs the overall response actions of REP Plant personnel in coordination with the Security Officer.

b. The Security Officer coordinates with the CAS and the SAS to assume control of security force response operations as soon as practical during the initial response period of a contingency situation.

c. The CAS coordinates initial security force response actions directed at the REP Plant's protected area until control is assumed by the Security Officer.

d. The SAS coordinates initial security force response actions directed at site locations other than the REP Plant's protected area until control is assumed by the Security Officer.

e. Coordination of Security Force Operations with LEA response force operations will be accomplished through the Security Officer to the senior Red Town Police official present. Red Town Police coordinate overall LEA response operations.

f. The CAS operates continually in the Site Radio Comm Net to serve as the net base station for control of the net.

g. Site security force operational elements enter and operate in the Site Radio Comm Net from receipt of a contingency alert until the Security Officer terminates the alert.

h. As required by the situation, operational elements alert and pass information to each other by the fastest available means, i.e., radio, telephone, intercom, silent alarms, messenger, voice.

i. All operational elements report the situation for purposes of operational coordination by observing and reporting on:

- Adversary strength, description, disposition, and activities.
- Onsite dispositions and activity opposing the adversary situation.

j. The CAS maintains Building 10 locked and allows no person to pass unless specifically authorized by the REP Plant MGMT or the Security Officer whenever:

- An unresolved CAS alarm situation exists.
- A threatening situation is perceived to exist, e.g., armed persons or known criminals on site, threatening civil disturbances exist, etc.
- An emergency evacuation of plant exists or a perceived possibility of an internal theft attempt exists.
- An adversary penetration of plant is imminent, in progress, or exists.

4.0 SAS'S CONTINGENCY TASK SEQUENCES

4.1 IN THE EVENT THAT THE SAS:

- Receives or learns of an explicit threat against the plant,
- Infers that a threat exists from a civil disturbance or because of observed anomalies or other suspicious situations, or
- Is informed that a serious threat exists by REP Plant MGMT or other authority,

THE SAS WILL:

a. Report all information about the perceived threat without delay to the Security Officer and keep REP Plant MGMT informed as applicable.

b. Contact local police and other sources as necessary to monitor the status of civil disturbances and pertinent offsite suspicious activity of concern to REP Plant security.

c. Implement additional security surveillance of REP Plant and CAS as directed by the Security Officer, e.g.,

- Brief On-Duty and Off-Duty Guards and RESPN Team elements concerning the threat and readiness preparations,
- Place Off-Duty Guard on standby alert, and
- Reinforce the CAS, the RESPN Team, and the patrol security of REP Plant.

4.2 IN THE EVENT THAT THE SAS:

- Receives an indication of a possible plant penetration, such as:
  - Annunciation of the silent alarm from the CAS, or otherwise reported by the CAS,
  - Annunciation of plant alarms without followup information from the CAS,
  - Suspicious acts or noises reported in or near the plant or on site, or
  - Civil disturbance or other suspicious situation on site, or being directed at the site.

THE SAS WILL:

a. Marshall and dispatch the RESPN Team to investigate and report on the situation.

b. As applicable, alert the CAS and the Security Officer about the situation and keep them informed of investigative results.

c. Monitor and assess the situation to determine if there is danger of an attempted plant penetration.

d. If an attempted plant penetration is perceived or appears to be imminent,

- Commit the RESPN Team to stop or to delay the adversary, depending upon the relative situation of the adversary and the RESPN Team.
- Request assistance of the LEA response force if it has not been requested already by the CAS or if the perceived adversary is still off site or is on site but not yet at the plant's exclusion area.
- During its deployment to the site, keep the LEA response force informed of the site security and adversary situations and other information as directed by the Security Officer.
- Alert, marshal, brief, and assist in the deployment of the Off-Duty Guards as directed by the Security Officer.
- Alert and keep Site MGMT informed of the situation.
- Prevent penetration of the SAS by the adversary.

e. If the plant is seized and held hostage by the adversary, monitor the situation and:

- Brief and deploy the RESPN Team and the marshalled Off-Duty Guards as directed by the Security Officer to assist onsite LEA maintain surveillance of the plant's protected area and isolation of the plant from unauthorized traffic and persons.
- Keep the Security Force, REP Plant MGMT, and Site MGMT informed of the situation to enhance effective coordination of the activities supporting negotiation efforts and preventing adversary escape with SNM.

f. If the adversary penetrates the plant and escapes,

- Immediately report information on the escape situation to the LEA, i.e.,
  - Egress route and last seen direction of movement,
  - Transport description and license number(s),

- Number of persons involved and descriptions,
  - Description of articles carried by adversary on departure, and
  - Location of adversary and cargo in the transport.
- Request the LEA to execute road blocks and hot pursuit operations to apprehend the adversary for recovery of any missing SNM.
- g. Assist in conducting after-action interviews of the Security Force as directed by the Security Officer.

#### 4.3 IN THE EVENT THE SAS:

- Learns of a possible internal attempt to steal SNM or to sabotage the plant, e.g.,
  - Attempt is reported from CAS, REP Plant MGMT, or the Security Officer,
  - Intrusion alarm, door alarm, or MAA portal alarm annunciates,
  - An emergency evacuation or other type disturbance (fight, irrational behavior, etc.) occurs in the plant, or
  - An unexpected power outage, communication outage, or other safeguards degrading incident occurs,

#### THE SAS WILL:

- a. Alert and dispatch RESPN Team if warranted by the situation to:
- Investigate and report on alarm situations and take action as required to prevent an internal adversary's (1) escape with SNM or (2) sabotage of the plant.
  - Observe evacuations of the plant buildings for any suspicious activity (e.g., obvious security breaches, attempted hiding or passage of items in the protected area, attempted exit via protective fences, etc.) and report and investigate any such activity.
- b. Dispatch guard assistance when requested by REP Plant MGMT to assist in dealing with internal disturbances.
- c. Marshall Off-Duty Guards and request LEA assistance as directed by the Security Officer.
- d. Brief and deploy the security force as directed by the Security Officer to compensate for degraded plant safeguards capability.

4.4 IN THE EVENT THAT THE SAS IS INFORMED OF:

- Physical evidence suggesting that a previously undetected intrusion of the plant might have occurred, e.g.:
  - Hole in the perimeter fence, a plant wall, or the roof
  - Damaged plant doors or windows, or
- Damage that results in radioactive contamination external to plant,

THE SAS WILL:

- a. Coordinate with CAS, Security Officer, and REP Plant MGMT as necessary to obtain information on radiological hazard areas; keep guard force informed of such areas.
- b. Dispatch RESPN Team to inspect the plant area for damaged protective fences and buildings and to recommend security arrangements required to restore adequate protection; keep Security Officer and REP Plant MGMT informed of such information.
- c. Marshal and deploy Off-Duty Guards and RESPN Team elements as directed by the Security Officer to secure damaged plant areas and to isolate hazardous radioactive areas.



Enclosure 4

Appendix F

RESPN TEAM'S PROCEDURES SUMMARY

1. PURPOSE

This document summarizes the general responsibilities and contingency task sequences normally accomplished by the RESPN Team. The context and background perspective of these duties are presented in the basic plan.

2. RESPN TEAM'S GENERAL RESPONSIBILITIES

The RESPN Team will accomplish general responsibilities listed below in coordination with CAS and SAS. SAS will keep the Site Security Officer informed of RESPN Team actions as appropriate to the situation.

- a. Be prepared to arm, to communicate, and to respond immediately when alerted and to summon LEA response force as dictated by the situation.
- b. Intercept, assess, report, and deal with perceived adversary incursions against REP Plant until effective LEA arrival in order to prevent theft or plant sabotage.
- c. Monitor and report on pertinent civil disturbances and other suspicious situations to assist in assessing their danger to REP Plant.
- d. Secure and protect damaged plant areas or plant areas with degraded safeguards capability, as directed by the Security Officer.

3. STANDARD PROCEDURES

- a. REP Plant MGMT directs the overall response actions of REP Plant personnel in coordination with the Security Officer.
- b. The Security Officer coordinates with the CAS and the SAS to assume control of security force response operations as soon as practical during the initial response period of a contingency situation.
- c. The CAS coordinates initial security force response actions directed at the REP Plant's protected area until control is assumed by the Security Officer.

d. The SAS coordinates initial security force response actions directed at site locations other than the REP plant's protected area until control is assumed by the Security Officer.

e. Coordination of security force operations with LEA response force operations will be accomplished through the Security Officer to the senior Red Town Police official present. Red Town Police coordinate overall LEA response operations.

f. The CAS operates continually in the Site Radio Comm Net to serve as the net base station for control of the net.

g. Site security force operational elements enter and operate in the Site Radio Comm Net from receipt of a contingency alert until the Security Officer terminates the alert.

h. As required by the situation, operational elements alert and pass information to each other by the fastest available means, i.e., radio, telephone, intercom, silent alarms, messenger, voice.

i. All operational elements report the situation for purposes of operational coordination by observing and reporting on:

- Adversary strength, description, dispositions, and activities.
- Onsite dispositions and activity opposing the adversary situation.

j. The CAS maintains Building 10 locked and allows no person to pass unless specifically authorized by the REP Plant MGMT or the Security Officer whenever:

- An unresolved CAS alarm situation exists.
- A threatening situation is perceived to exist, e.g., armed persons or known criminals on site, threatening civil disturbances exist, etc.
- An emergency evacuation of plant exists or a perceived possibility of an internal theft attempt exists.
- An adversary penetration of plant is imminent, in progress, or exists.

#### 4. RESPN TEAM'S CONTINGENCY TASK SEQUENCES

##### 4.1 IN THE EVENT THAT THE RESPN TEAM:

- Receives or learns of an explicit threat against the plant,
- Is informed by the SAS or Security Officer that a civil disturbance or other suspicious situation might constitute a threat against the plant, or

- Learns from the Security Officer or other authority that a serious threat actually exists against the plant,

THE RESPN TEAM WILL:

a. As applicable, report all threat information to the Security Officer (SAS) without delay to assist in initial and continuing assessment of the threat situation.

b. When directed by the Security Officer (SAS), accomplish on-scene monitoring of the civil disturbance or suspicious situations to obtain and report information for early warning and for assessing the seriousness of the inferred threat.

c. Accomplish deployments and additional security surveillance of the plant as directed by the Security Officer (SAS).

4.2 IN THE EVENT THAT THE RESPN TEAM:

- Receives an indication of a possible plant penetration, e.g.,
  - CAS or SAS requests assistance to investigate an annunciating intrusion alarm, suspected noises, or other suspicious circumstance in or near the plant's protected area,
  - SAS indicates that a civil disturbance or suspected group or person is either on site or expected to arrive on site, or
  - Security Officer (SAS) informs that an attempt to penetrate the plant is imminent or in progress,

THE RESPN TEAM WILL:

a. Rendezvous as directed by the Security Officer (SAS) for necessary arms, communication equipment, and briefing on the situation.

b. Move to area of concern via routes affording concealment and cover appropriate to the situation; coordinate with CAS and SAS as necessary to check communications, to obtain additional information needed for tentative deployment planning, and to report progress and plans.

c. On arrival at scene, observe and investigate the situation to determine if an adversary attempt to penetrate the plant is underway or imminent and to determine a suitable deployment for the RESPN Team; report the situation to CAS or SAS as appropriate.

d. If an attempt to penetrate the plant is perceived or reported to the RESPN Team by appropriate authority,

- Deploy the RESPN Team to apprehend, stop, or delay the adversary, depending upon the adversary's relative strength and dispositions and the need for protective cover and concealment for the RESPN Team.
  - Conduct operations as necessary to apprehend, stop, or delay the adversary until the LEA response force arrives.
  - Keep the Security Officer (SAS) informed of the situation and request reinforcements as dictated by the situation.
- e. If the plant is seized and held hostage by the adversary, accomplish deployments and security measures as directed by the Security Officer (SAS) to prevent adversary escape with SNM; continue to observe and report the situation.
- f. If the adversary penetrates the plant and escapes, immediately notify the Security Officer (SAS) of the observed escape situation, i.e.,
- Egress routes and last seen direction of movement,
  - Transport description and license number(s),
  - Number of persons involved and descriptions,
  - Description of articles carried on departure, and
  - Location of adversary and cargo in the transport.
- g. Accomplish deployments and security measures as directed by the Security Officer (SAS) to restore or maintain protection of the plant.
- h. Accomplish tasks in paragraph 4.3 below if plant damage or dispersed radioactivity exists, or if physical evidence is reported which suggests that a previously undetected intrusion might have occurred.

4.3 IN THE EVENT THAT THE RESPN TEAM IS INFORMED OF OR OBSERVES:

- Physical evidence suggesting that a previously undetected intrusion of the plant might have occurred, e.g.,
  - Hole in the perimeter fence, a plant wall, the roof,
  - Damaged plant doors or windows, or
  - Damage that results in radioactive contamination external to plant,

THE RESPN TEAM WILL:

a. Report location and nature of the damage or physical evidence to the Security Officer (SAS) and provide additional security as directed.

b. Isolate hazardous radioactive areas.

4.4 IN THE EVENT THAT THE RESPN TEAM:

- Is alerted by the CAS or REP Plant MGMT of a possible internal attempt to steal SNM or to sabotage the plant, such as:
  - Internal intrusion alarms, door alarms, or MAA portal alarms annunciate,
  - An emergency evacuation or other type of disturbance (fight, irrational behavior, etc.) occurs in the plant, or
  - An unexpected power outage, communication outage, or other safeguards degrading incident occurs,

THE RESPN TEAM WILL:

a. Deploy to the scene as directed by the CAS or Security Officer and investigate situation.

b. Report on-scene situation to CAS and Security Officer.

c. Lock doors and reset alarm system in coordination with REP Plant MGMT.

d. Provide additional security as directed by CAS and Security Officer.

e. Apprehend individuals attempting sabotage of REP Plant or unauthorized removal of SNM from REP Plant.

Enclosure 5

Appendix F

OFF-DUTY GUARDS' PROCEDURES SUMMARY

1. PURPOSE

This document summarizes the general responsibilities and contingency task sequences normally accomplished by the Off-Duty Guards. The context and background perspective of these duties are presented in the basic plan.

2. OFF-DUTY GUARDS' GENERAL RESPONSIBILITIES

The Off-Duty Guards will accomplish general responsibilities listed below in coordination with SAS:

- a. Be prepared to execute alert procedures and assemble when directed by SAS.
- b. Reinforce the CAS or REP Plant security as applicable.

3. STANDARD PROCEDURES

- a. REP Plant MGMT directs the overall response actions of REP Plant personnel in coordination with the Security Officer.
- b. The Security Officer coordinates with the CAS and the SAS to assume control of security force response operations as soon as practical during the initial response period of a contingency situation.
- c. The CAS coordinates initial security force response actions directed at the REP Plant's protected area until control is assumed by the Security Officer.
- d. The SAS coordinates initial security force response actions directed at site locations other than the REP plant's protected area until control is assumed by the Security Officer.
- e. Coordination of security force operations with police response force operations will be accomplished through the Security Officer to the senior Red Town Police official present. Red Town Police coordinate overall police response operations.
- f. The CAS operates continually in the Site Radio Comm Net to serve as the net base station for control of the net.

g. Site security force operational elements enter and operate in the Site Radio Comm Net from receipt of a contingency alert until the Security Officer terminates the alert.

h. As required by the situation, operational elements alert and pass information to each other by the fastest available means, i.e., radio, telephone, intercom, silent alarms, messenger, voice.

i. All operational elements report the situation for purposes of operational coordination by observing and reporting on:

- Adversary strength, description, dispositions, and activities.
- Onsite dispositions and activity opposing the adversary situation.

j. The CAS maintains Building 10 locked and allows no person to pass unless specifically authorized by the REP Plant MGMT or the Security Officer whenever:

- An unresolved CAS alarm situation exists.
- A threatening situation is perceived to exist, e.g., armed persons or known criminals on site, threatening civil disturbances exist, etc.
- An emergency evacuation of plant exists or a perceived possibility of an internal theft attempt exists.
- An adversary penetration of plant is imminent, in progress, or exists.

#### 4. OFF-DUTY GUARDS' CONTINGENCY TASK SEQUENCES

##### 4.1 IN THE EVENT THAT THE OFF-DUTY GUARDS ARE PLACED ON ALERT STATUS BY THE SECURITY OFFICER (SAS):

###### THE OFF-DUTY GUARDS WILL:

- a. Assemble at the designated point as soon as possible and be prepared to accomplish guard security functions.
- b. Accomplish and maintain security deployments and duties as directed by the Security Officer or SAS.

Enclosure 6

Appendix F

SITE MANAGEMENT'S PROCEDURES SUMMARY

1. PURPOSE

This document summarizes the general responsibilities and contingency task sequences normally accomplished by the Site MGMT. The context and background perspective of these duties are presented in the basic plan.

2. SITE MGMT'S GENERAL RESPONSIBILITIES

Site MGMT will accomplish general responsibilities listed below in coordination with Security Officer (SAS) and REP Plant MGMT:

- a. Monitor on-going situation.
- b. Provide emergency supporting services.
- c. Execute site emergency plans as indicated by the situation.

3. STANDARD PROCEDURES

- a. REP Plant MGMT directs the overall response actions of REP Plant personnel in coordination with the Security Officer.
- b. The Security Officer coordinates with the CAS and the SAS to assume control of security force response operations as soon as practical during the initial response period of a contingency situation.
- c. The CAS coordinates initial security force response actions directed at the REP Plant's protected area until control is assumed by the Security Officer.
- d. The SAS coordinates initial security force response actions directed at site locations other than the REP plant's protected area until control is assumed by the Security Officer.
- e. Coordination of security force operations with police response force operations will be accomplished through the Security Officer to the senior Red Town Police official present. Red Town Police coordinate overall police response operations.



f. The CAS operates continually in the Site Radio Comm Net to serve as the net base station for control of the net.

g. Site security force operational elements enter and operate in the Site Radio Comm Net from receipt of a contingency alert until the Security Officer terminates the alert.

h. As required by the situation, operational elements alert and pass information to each other by the fastest available means, i.e., radio, telephone, intercom, silent alarms, messenger, voice.

i. All operational elements report the situation for purposes of operational coordination by observing and reporting on:

- Adversary strength, description, dispositions, and activities.
- Onsite dispositions and activity opposing the adversary situation.

j. The CAS maintains Building 10 locked and allows no person to pass unless specifically authorized by the REP Plant MGMT or the Security Officer whenever:

- An unresolved CAS alarm situation exists.
- A threatening situation is perceived to exist, e.g., armed persons or known criminals on site; threatening civil disturbances exist.
- An emergency evacuation of plant exists or a perceived possibility of an internal theft attempt exists.
- An adversary penetration of plant is imminent, in progress, or exists.

#### 4.0 SITE MGM'S CONTINGENCY TASK SEQUENCES:

##### 4.1 IN THE EVENT THAT THE SITE MGMT RECEIVES OR LEARNS OF AN EXPLICIT THREAT AGAINST THE PLANT,

###### THE SITE MGMT WILL:

Report all information about the perceived threat without delay to the Security Officer and REP Plant MGMT.

##### 4.2 IN THE EVENT THAT THE SITE MGMT IS INFORMED:

- That a serious threat against the plant exists or
- That an emergency evacuation of the plant occurs,

THE SITE MGMT WILL:

Be prepared to provide emergency supporting services when requested by REP Plant MGMT and to execute site emergency plans when required by the situation.

4.3 IN THE EVENT THAT SITE MGMT LEARNS THAT A PLANT PENETRATION IS IN PROGRESS OR IS PERCEIVED AS IMMINENT,

THE SITE MGMT WILL:

- a. Establish and maintain liaison with REP Plant MGMT to keep appraised of the situation.
- b. Provide emergency supporting services and execute site emergency plans as warranted by the situation.
- c. If the plant is penetrated and held hostage, be prepared to accomplish REP Plant MGMT actions in the event REP Plant MGMT is unavailable due to hostage situation.

Enclosure 7

Appendix F

REP PLANT MGMT'S PROCEDURES SUMMARY

1. PURPOSE

This document summarizes the general responsibilities and contingency task sequences normally accomplished by the REP Plant MGMT. The context and background perspective of these duties are presented in the basic plan.

2. REP PLANT MGMT'S GENERAL RESPONSIBILITIES

REP Plant MGMT will accomplish general responsibilities listed below in coordination with Site MGMT, NRC, and local, county, and State police:

- a. Assess threats made against REP Plant to determine their seriousness.
- b. Increase security readiness as appropriate to prevent theft of SNM or sabotage at REP Plant whenever threatened adversary incursions are serious.
- c. Monitor and assess incursion situations and direct security and REP Plant operations as necessary to prevent theft of SNM or sabotage.
- d. Conduct extra SNM inventories and other MCA operations indicated by the situation to assess theft or diversion possibilities or to determine if SNM is missing.

3. STANDARD PROCEDURES

- a. REP Plant MGMT directs the overall response actions of REP Plant personnel in coordination with the Security Officer.
- b. The Security Officer coordinates with the CAS and the SAS to assume control of security force response operations as soon as practical during the initial response period of a contingency situation.
- c. The CAS coordinates initial security force response actions directed at site locations other than the REP Plant's protected area until control is assumed by the Security Officer.

d. The SAS coordinates initial security force response actions directed at site locations other than the REP Plant's protected area until control is assumed by the Security Officer.

e. Coordination of security force operations with police response force operations will be accomplished through the Security Officer to the senior Red Town Police official present. Red Town Police coordinate overall police response operations.

f. The CAS operates continually in the Site Radio Comm Net to serve as the net base station for control of the net.

g. Site security force operational elements enter and operate in the Site Radio Comm Net from receipt of a contingency alert until the Security Officer terminates the alert.

h. As required by the situation, operational elements alert and pass information to each other by the fastest available means, i.e., radio, telephone, intercom, silent alarms, messenger, voice.

i. All operational elements report the situation for purposes of operational coordination by observing and reporting on:

- Adversary strength, description, dispositions, and activities.
- Onsite dispositions and activity opposing the adversary situation.

j. The CAS maintains Building 10 locked and allows no person to pass unless specifically authorized by the REP Plant MGMT or the Security Officer whenever:

- An unresolved CAS alarm situation exists.
- A threatening situation is perceived to exist, e.g., armed persons or known criminals on site, threatening civil disturbances exist, etc.
- An emergency evacuation of plant exists or a perceived possibility of an internal theft attempt exists.
- An adversary penetration of plant is imminent, in progress, or exists.

#### 4. REP PLANT MGMT'S CONTINGENCY TASK SEQUENCES

##### 4.1 IN THE EVENT THAT REP PLANT MGMT:

- Receives or learns of an explicit threat against the plant,
- Infers that a threat exists from a civil disturbance or because of observed anomalies or other suspicious situations at the plant, or

- Is informed that a serious threat exists by duly constituted authority,

THE REP PLANT MGMT WILL:

- a. Have the Security Officer arrange monitoring of the civil disturbance or suspicious situation to assess the extent of danger to the plant, as applicable.
- b. Assemble available information on threat and adversary.
- c. Report threat to NRC, to company headquarters, and to law enforcement agencies as applicable and request any pertinent information that may be available.
- d. Assess available information to determine if threat is serious; if threat is perceived serious or determined serious by duly constituted authority,
  - Report assessment to NRC, to company headquarters, and to Site MGMT.
  - Coordinate with company headquarters and Site MGMT as appropriate to inform local, county, and State law enforcement of threat and to request assistance.
  - Direct increased plant security appropriate to situation via Security Officer.
  - Monitor on-going situation and be prepared to take further actions as necessary.

4.2 IN THE EVENT THAT REP PLANT MGMT:

- Is requested by duly constituted authority to perform an item count inventory in relation to a threat posed elsewhere,

THE REP PLANT MGMT WILL:

- a. Direct the conduct of the item count inventory and
- b. Report results to NRC.

4.3 IN THE EVENT THAT THE REP PLANT MGMT:

- Receives a report from the Security Officer, CAS, or SAS or otherwise learns of an imminent or ongoing attempt by an adversary or civil disturbance to penetrate the plant,

THE REP PLANT MGMT WILL:

- a. Depending upon situation, direct evacuation of plant personnel from plant area or assemble personnel into the protection of central rooms in plant area.

b. In coordination with Security Officer, continue monitoring and assessment of on-going situation; direct additional security measures as required by situation.

c. Report situation to NRC.

d. If plant is seized and held hostage,

- Report situation to Security Officer, police authorities, and NRC as appropriate.
- Establish communications with adversary and direct negotiations until police arrive.
- As required by police situation, request NRC arrange Federal assistance from FBI to negotiate plant's release and adversary surrender.
- Assist police and FBI; as applicable, negotiate with adversary.

e. If adversary escapes,

- As appropriate to situation, monitor and report escape situation to Security Officer and police authorities; request offsite apprehension.
- Direct radiological survey of plant damage.
- Coordinate with Security Officer to deploy guard force for protection of uncovered plant exclusion area.
- Conduct inventory and accounting of SNM.
- Conduct interviews of guards and plant employees to determine if SNM theft was observed.
- Assemble and assess information to estimate quantity/type SNM stolen and radio-activity dispersed.
- Report situation and status of SNM and dispersal to NRC.

#### 4.4 IN THE EVENT THAT THE REP PLANT MGMT:

- Learns of a possible internal attempt to steal SNM or to sabotage the plant, such as:
  - Internal intrusion alarms, door alarms, or MAA portal alarms annunciate,
  - An emergency evacuation or other type of disturbance (fight, irrational behavior, etc.) occurs in the plant, or

- An unexpected power outage, communication outage, or other safeguards degrading incident occurs,
- Observes or is informed of physical evidence suggesting that a previously undetected intrusion of the plant might have occurred, such as,
  - Hole in perimeter fence, a plant wall, the roof,
  - Damaged plant doors or windows,

THE REP PLANT MGMT WILL:

- a. Coordinate with the Security Officer as necessary to determine the circumstances of the incident and the present status and activity of the security force; request law enforcement and immediate guard assistance as indicated by the situation.
- b. Assemble and assess available information on the incident to determine if it is associated with an attempted theft or sabotage.
- c. Direct additional security measures and plant actions as required by the situation, e.g.,
  - Restore safeguards and security for plant exclusion area, MAA, and VA,
  - Search Plant exclusion and contiguous areas for diverted SNM,
  - Conduct inventory and accounting of SNM, and
  - Assess circumstances of situation to assist law enforcement investigators to identify and apprehend adversary.
- d. As warranted, report situation and status of SNM and dispersal to NRC.

4.5 IN THE EVENT THAT REP PLANT MGMT:

- Is aware of plant damage that results in radioactive contamination,

THE REP PLANT MGMT WILL:

- a. Assemble information and assess damage, security deficiencies, and radiological hazard.
- b. Commence radiological safety emergency plan procedures as applicable.
- c. Secure the plant and restore safeguards to MAA and exclusion areas.
- d. Establish priorities for temporary and permanent repairs to plant and security systems.

- e. Report situation to NRC.

4.6 IN THE EVENT THAT REP PLANT MGMT:

- Learns that material control and accounting records have been damaged, destroyed, altered or are missing, or
- Is advised that the material control and accounting system indicates a possible theft of SNM,

THE REP PLANT MGMT WILL:

- a. Report situation to NRC.
- b. Assemble and assess information on damage, destruction, or discrepancies pertaining to MCA records.
- c. Reconstruct records if applicable.
- d. Direct audit and inventory as necessary to locate possible erroneous data from previous inventory actions.
- e. Resolve differences between inventory data and record data.
- f. If SNM is unaccounted for, report type and quantity missing to NRC.



Enclosure 8

Appendix F

ADMIN, MAA, BLDG 7 PERSONNEL'S PROCEDURES SUMMARY

1. PURPOSE

This document summarizes the general responsibilities and contingency task sequences normally accomplished by the ADMIN, MAA, and BLDG 7 personnel. The context and background perspective of these duties are presented in the basic plan.

2. ADMIN, MAA, BLDG 7 PERSONNEL'S GENERAL RESPONSIBILITIES

ADMIN, MAA, BLDG 7 personnel will accomplish general responsibilities listed below in coordination with REP Plant MGMT.

a. Upon receiving alert of a possible adversary incursion, immediately lock doors to MAA and VA, as applicable, to protect against possible SNM theft or sabotage, and be prepared to assemble or to evacuate as directed by REP Plant MGMT.

b. Observe for and report information on adversary activities or suspicious events to REP Plant MGMT to assist in assessment of the on-going situation, and to detect attempts to steal or divert SNM or to sabotage.

d. Assist in conducting SNM inventories and other operations as directed by REP Plant MGMT to assess possibilities of theft or to determine if SNM is missing.

d. Report damaged or unprotected areas in REP Plant buildings, and provide protection to restore security as directed by REP Plant MGMT.

3. STANDARD PROCEDURES

a. REP Plant MGMT directs the overall response actions of REP Plant personnel in coordination with the Security Officer.

b. The Security Officer coordinates with the CAS and the SAS to assume control of security force response operations as soon as practical during the initial response period of a contingency situation.

c. The CAS coordinates initial security force response actions directed at the REP Plant's protected area until control is assumed by the Security Officer.

d. The SAS coordinates initial security force response actions directed at site locations other than the REP Plant's protected area until control is assumed by the Security Officer.

e. Coordination of security force operations with police response force operations will be accomplished through the Security Officer to the senior Red Town Police official present. Red Town Police coordinate overall police response operations.

f. The CAS operates continually in the Site Radio Comm Net to serve as the net base station for control of the net.

g. Site security force operational elements enter and operate in the Site Radio Comm Net from receipt of a contingency alert until the Security Officer terminates the alert.

h. As required by the situation, operational elements alert and pass information to each other by the fastest available means, i.e., radio, telephone, intercom, silent alarms, messenger, voice.

i. All operational elements report the situation for purposes of operational coordination by observing and reporting on:

- Adversary strength, description, dispositions, and activities and
- Onsite dispositions and activity opposing the adversary situation.

j. The CAS maintains Building 10 locked and allows no person to pass unless specifically authorized by the REP Plant MGMT or the Security Officer whenever:

- An unresolved CAS alarm situation exists.
- A threatening situation is perceived to exist, e.g., armed persons or known criminals on site, threatening civil disturbances exist, etc.
- An emergency evacuation of plant exists or a perceived possibility of an internal theft attempt exists.
- An adversary penetration of plant is imminent, in progress, or exists.

#### 4. ADMIN, MAA, BLDG 7 PERSONNEL'S CONTINGENCY TASK SEQUENCES

##### 4.1 IN THE EVENT THAT ADMIN, MAA, BLDG 7 PERSONNEL:

- Receive or learns of an explicit threat against the plant,
- Are informed by the SAS or Security Officer that a civil disturbance or other suspicious situation might constitute a threat against the plant, or

- Learn from the Security Officer or other authority that a serious threat actually exists against the plant,

THE ADMIN, MAA, BLDG 7 PERSONNEL WILL:

- a. Report to REP Plant MGMT and Security Officer without delay all threat information or knowledge of civil disturbances and other suspicious events.
- b. Perform additional security surveillance of plant as directed by REP Plant MGMT.
- c. Be prepared to assist in securing REP Plant MAA, vital areas, and building when alerted.

4.2 IN THE EVENT THE ADMIN, MAA, BLDG 7 PERSONNEL:

- Observe or are informed that a plant penetration is in progress or is perceived imminent,

THE ADMIN, MAA, BLDG 7 PERSONNEL WILL:

- a. When alerted, immediately lock alarmed doors that might happen to be open.
- b. Execute evacuation or assembly as directed by REP Plant MGMT.
- c. If the plant is seized and held hostage by the adversary,
  - Keep alarmed doors locked as applicable.
  - Evacuate REP Plant employees as directed by REP Plant MGMT.
  - Communicate with adversary only as directed by REP Plant MGMT.
- d. If the adversary penetrates the plant and escapes,
  - Report to REP Plant MGMT any observed plant damage or likely radiological hazards caused by the adversary.
  - Execute pertinent radiological emergency plans as directed by REP Plant MGMT.
  - Secure MAA and VA in accordance with REP Plant procedures.
  - Report any observed SNM theft by adversary to REP Plant MGMT.
  - Assist in conduct of SNM inventory in accordance with REP Plant procedure.

4.3 IN THE EVENT THAT ADMIN, MAA, BLDG 7 PERSONNEL:

- Learn of a possible internal attempt to steal SNM or to sabotage the plant, e.g.,
  - Material control and accounting records are damaged, destroyed, altered, missing or the accounting and control system indicates a possible theft,
  - CAS, REP Plant MGMT, or the Security Officer reports,
  - Intrusion alarm, door alarm, or MAA portal alarm annunciates,
  - An emergency evacuation or other type disturbance (fight, irrational behavior, etc.) occurs in the plant,
  - An emergency power outage, communication outage, or other safeguards degrading incident occurs,
- Learn of physical evidence suggesting that a previously undetected intrusion of the plant might have occurred, e.g.,
  - Hole in the perimeter fence, a plant wall, the roof or
  - Damaged plant doors or windows,

THE ADMIN, MAA, BLDG 7 PERSONNEL WILL:

- a. As applicable, report to REP Plant MGMT any observed security breaches or suspicious activity, particularly regarding attempts to hide items or to pass items outside the perimeter fence.
- b. Assist in the assessment of the situation and restoration of safeguards and services as directed by REP Plant MGMT.
- c. Assist in search of REP Plant area for diverted SNM and for evidence of sabotage as directed by REP Plant MGMT.
- d. Assist accomplishment of inventory actions as directed by REP Plant MGMT.

4.4 IN THE EVENT THAT ADMIN, MAA, BLDG 7 PERSONNEL ARE INFORMED OF:

- Damage that results in radioactive contamination,

THE ADMIN, MAA, BLDG 7 PERSONNEL WILL:

- a. Execute pertinent radiological safety emergency plans.

b. Post watchman as required to secure MAA and VA and coordinate with Security Officer to obtain desired guard support.

c. Report damage and physical security deficiencies to REP Plant MGMT.

Enclosure 9

Appendix F

LEA'S PROCEDURES SUMMARY

1. PURPOSE

This document summarizes the general responsibilities and task sequences that are requested of the pertinent LEA in the planned contingency situations. The context and background perspective of these actions are presented in the basic plan.

2. LEA'S GENERAL FUNCTIONS

The LEA have an overall responsibility to maintain law and order within their respective jurisdictional areas. With their available resources they endeavor to prevent illegal activities, solve crimes, and apprehend law breakers. Within the context of their law enforcement responsibilities, applicable LEA, in the near vicinity of NRC licensed facilities requiring Part 73 physical protection, have been requested to perform the functions listed below in response to contingency situations.

- a. Provide investigative assistance to check on a suspicious situation.
- b. Provide a response force to deal with unlawful adversary actions against nuclear facilities within their jurisdiction.
- c. Provide traffic control and area isolation (cordon) as required by the situation.

3. STANDARD PROCEDURES

Red Town Police have been requested to:

- a. Be prepared to respond as soon as possible to a request for law enforcement assistance from the plant.
- b. Marshal and coordinate assistance from other law enforcement jurisdictions as required to deal with unlawful incursions against the plant.
- c. Report any available information to the REP Plant MGMT, NRC, and the FBI that is indicative of possible danger to the plant or personnel.
- d. Coordinate law enforcement plans and response operations with the Security Officer.

#### 4. LEA'S TASK SEQUENCES

##### 4.1 IN THE EVENT THAT LEA ASSISTANCE IS REQUESTED REGARDING:

- An explicit threat against the plant,
- A civil disturbance or other suspicious situation that might constitute a threat against the plant, or
- A serious threat that is believed to exist against the plant,

##### THE LEA CAN BE EXPECTED TO:

- a. Provide any available information relative to the situation.
- b. Assist REP Plant MGMT in assessment of the threat as requested.

##### 4.2 IN THE EVENT THAT LEA:

- Is advised of an event that requires temporary changes in LEA response plans,
  - Blocked LLEA route to site,
  - Communication outages,

##### THE LEA CAN BE EXPECTED TO:

- a. Coordinate with the Security Officer.
- b. Modify their plans for assistance as appropriate.

##### 4.3 IN THE EVENT THAT LEA ASSISTANCE IS REQUESTED REGARDING:

- A plant penetration that is in progress or is perceived as imminent,

##### THE LEA CAN BE EXPECTED TO:

- a. Request additional police assistance as warranted by the situation.
- b. Assemble a police force without delay at the plant site.
- c. Coordinate with the Security Officer to obtain situation information needed for effective direction of LEA resource operations.

- d. Establish offsite road blocks as required by situation.
- e. Execute police plans to apprehend adversaries.
- f. If the plant is seized and held hostage by the adversary,
  - Execute police plans to negotiate release of plant and hostages and the surrender of the adversary.
  - Establish and maintain road blocks on site and off site and other deployments as required to ensure capture of adversary if an escape is attempted.
- g. If escape from plant is underway,
  - Pursue and apprehend adversaries in coordination with State and county police authorities.
  - Assist FBI investigation to recover any stolen SNM.

4.4 IN THE EVENT THAT LEA ASSISTANCE IS REQUESTED REGARDING:

- Sabotage that has resulted in dispersal of radioactivity,

THE LEA CAN BE EXPECTED TO:

Assist in isolation of radiological hazards area by providing traffic and crowd control as necessary.



UNITED STATES  
NUCLEAR REGULATORY COMMISSION  
WASHINGTON, D. C. 20555

OFFICIAL BUSINESS  
PENALTY FOR PRIVATE USE, \$300

POSTAGE AND FEES PAID  
U.S. NUCLEAR REGULATORY  
COMMISSION

