



Briefing on Nuclear Security and Incident Response Programs

March 29, 2005

Briefing Topics

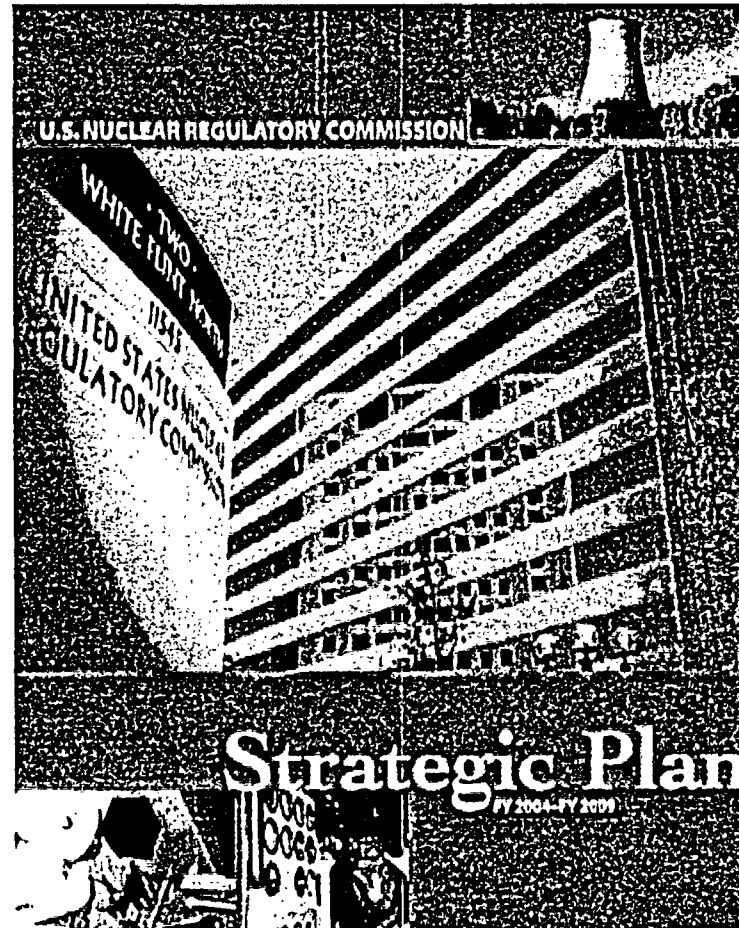
- *Overview*
- *Major Program Accomplishments*
- *Key Challenges*
- *Regional Perspectives*
- *Path to Success*
- *Near-Term Policy Issues*
- *Summary*

Overview

- *Programs Remain Dynamic*
- *Transitioning Toward Implementation*
- *Commitment to Continuous Improvement*

Major Program Accomplishments

- *Achieved All FY04 Strategic and Performance Goals*
- *On Track to Achieve FY05 Goals*



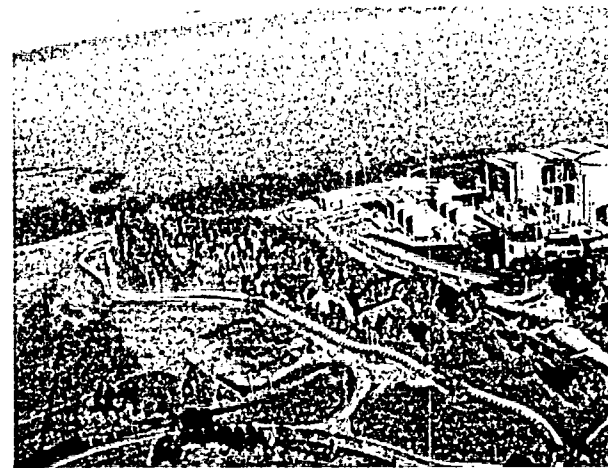
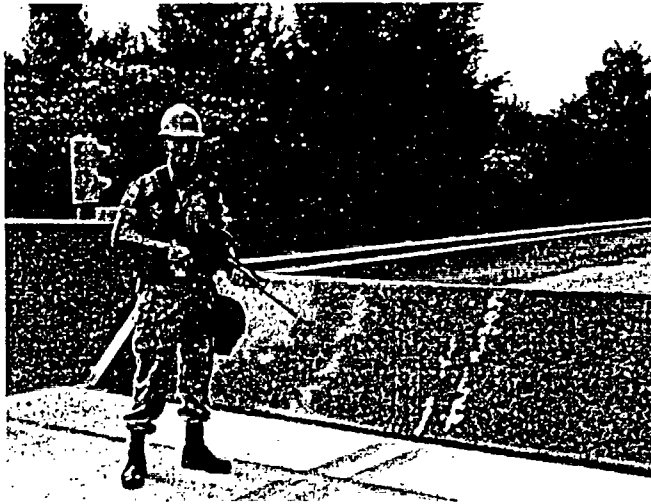
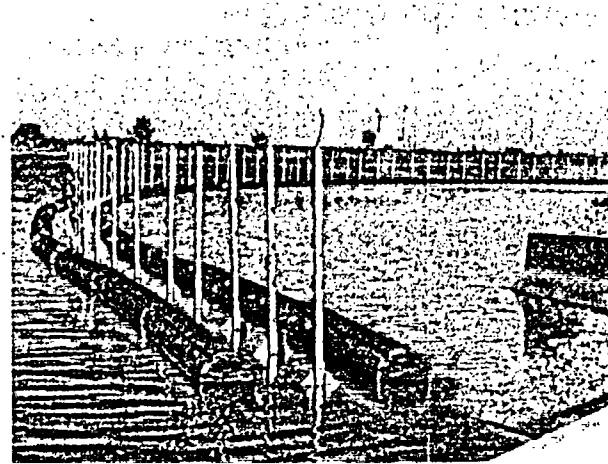
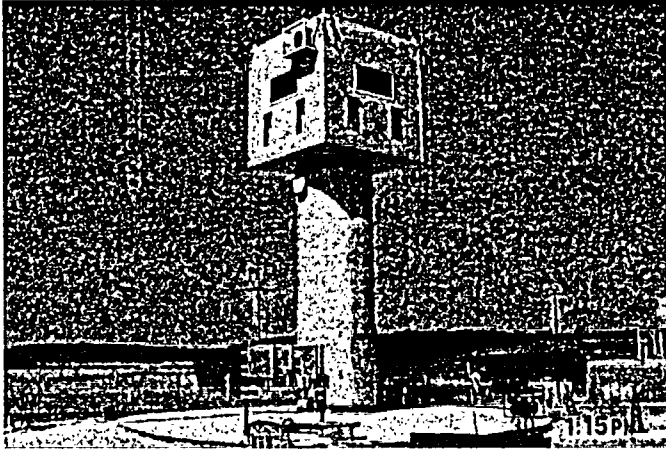
Major Program Accomplishments – Cont'd

Nuclear Security

- Completed Security Plan Reviews to Protect Against Supplemented Design Basis Threat
- Implemented Improved Force-on-Force Inspection Program
- Enhanced Reactors Baseline Inspection Program
- Strengthened Interagency Coordination and Integrated Response



Enhancements to Security



Major Program Accomplishments – Cont'd

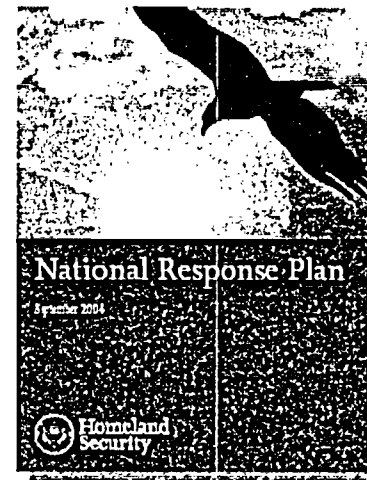
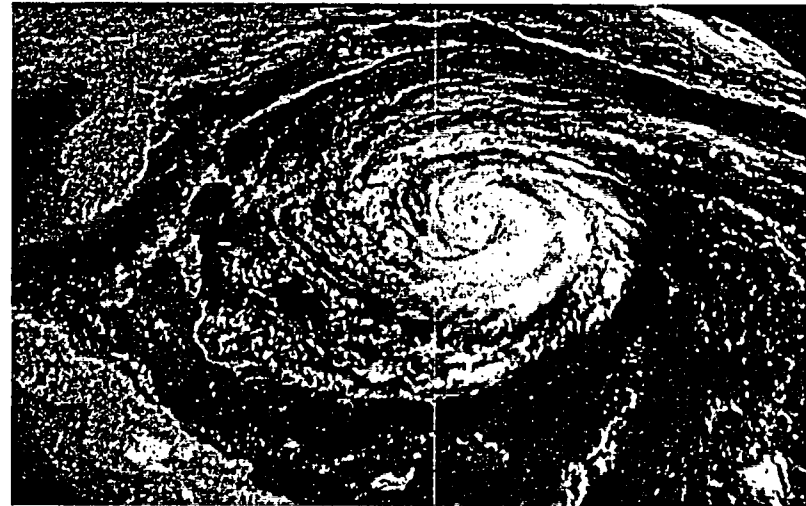
Nuclear Security - Cont'd

- *Strengthened Mitigative Measures for Beyond
Supplemented Design Basis Threat Events*
- *Enhanced Controls on Radioactive Sources*
- *Improved Access Controls of Non-Reactor Facilities*
- *Enhanced Protection of Sensitive Information*

Major Program Accomplishments – Cont'd

Emergency Preparedness and Incident Response

- *Successfully Responded to Real Events*
- *Strengthened Coordination with Federal, State and Local Governments*
- *Strengthened Emergency Preparedness Guidance to the Industry*
- *Partnered with the Department of Homeland Security on National Response Plan/National Incident Management System*
- *Participated in the First National Continuity of Operations Exercise*



Major Program Accomplishments – Cont'd

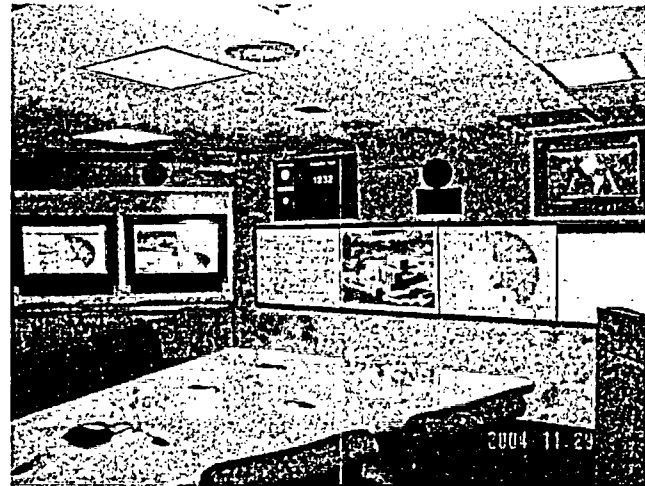
Emergency Preparedness and Incident Response - Cont'd

- *Enhanced Preparedness Through Realistic Federal Exercises*
- *Conducted Full-Scale Security/Emergency Preparedness Exercise at Indian Point*

Major Program Accomplishments – Cont'd

Infrastructure

- *Integrated Emergency Preparedness with Incident Response and Security*
- *Upgraded the Operations Center and Regional Incident Response Centers*
- *Achieved Full Staffing*
- *Strengthened Management Tools*
- *Enhanced Emergent Work Management*



Key Challenges

- *Handle Emergent Work*
- *Enhance Communications*
- *Enhance Effectiveness and Efficiency*
- *Retain High-Quality Staff*

Regional Implementation of Programs

- *Recruitment/Retention of Staff*
- *Internal Communication and Office Connectivity*
- *Effectiveness of Outreach With Stakeholders*
- *Challenges/Successes Toward Security Strategic Goal*

Path to Success

Nuclear Security Program

- *Complete Security Oversight Program*
- *Finalize New Materials Protective Measures*
- *Coordinate Interagency Initiatives*
- *Complete Remaining Plant-Specific Mitigative Measures*
- *Codify Existing Requirements Through Rulemakings*
- *Optimize Material Control and Accountability (MC&A) Program*

Path to Success - Cont'd

Emergency Preparedness and Incident Response Program

- *Implement National Response Plan/National Incident Management System*
- *Increase Outreach to State and Local Agencies*
- *Enhance Safety/Emergency Preparedness/Security Integration*
- *Implement Emergency Preparedness and Response Improvement Plan*



Path to Success - Cont'd

Infrastructure

- *Enhance Organizational and Staff Effectiveness*
- *Implement Qualifications Training*
- *Develop Electronic Safe/Secure Local Area Network*

Near-Term Policy Issues

Nuclear Security Program

- *Security Significance Determination Process*
- *Reactor Oversight Process for Security*
- *Transportation Security Issues*
- *Protective Measures for High-Risk Sources*
- *Design Basis Threat*
 - *Semi-Annual Review*

Near-Term Policy Issues - Cont'd

Emergency Response and Incident Response Program

- *Emergency Preparedness – Security Interface Issues*
- *Emergency Preparedness and Response Improvement Plan*

Summary

- *Significant Progress Since Last Review*
- *Transitioning Toward Implementation*
- *Progress Through Partnerships*

